

Datasheet for ABIN6939758

anti-IgL antibody

5 Images



[Go to Product page](#)

Overview

Quantity:	100 µg
Target:	IgL
Reactivity:	Human
Host:	Mouse
Clonality:	Monoclonal
Conjugate:	This IgL antibody is un-conjugated
Application:	Western Blotting (WB), Flow Cytometry (FACS), Immunohistochemistry (IHC), Immunofluorescence (IF), Staining Methods (StM)

Product Details

Immunogen:	Purified human IgG myeloma proteins coupled to polyaminostyren microbeads
Clone:	HP6054
Isotype:	IgG2a kappa
Specificity:	This MAb is specific to lambda light chain of immunoglobulin and shows no cross-reaction with lambda light chain or any of the five heavy chains. In mammals, the two light chains in an antibody are always identical, with only one type of light chain, kappa or lambda. The ratio of Kappa to Lambda is 70:30. However, with the occurrence of multiple myeloma or other B-cell malignancies this ratio is disturbed. Antibody to the lambda light chain is reportedly useful in the identification of leukemias, plasmacytomas, and certain non-Hodgkin's lymphomas. Demonstration of clonality in lymphoid infiltrates indicates that the infiltrate is malignant.
Purification:	Purified by Protein A/G

Target Details

Target: IgL

Abstract: [IgL Products](#)

Molecular Weight: ~22.5kDa

Gene ID: 3535, 3546

UniProt: [P01701](#), [P01842](#)

Application Details

Application Notes: Positive Control: 293T, Raji or hPBL cells. Tonsil or Spleen.
Known Application: Flow Cytometry (1-2 µg/million cells), Immunofluorescence (1-2 µg/mL), Western Blot (1-2 µg/mL), Immunohistochemistry (Formalin-fixed) (1-2 µg/mL for 30 minutes at RT)(Staining of formalin-fixed tissues requires boiling tissue sections in 10 mM Citrate Buffer, pH 6.0, for 10-20 min followed by cooling at RT for 20 minutes)Optimal dilution for a specific application should be determined.

Restrictions: For Research Use only

Handling

Concentration: 200 µg/mL

Buffer: 10 mM PBS with 0.05 % BSA & 0.05 % azide.

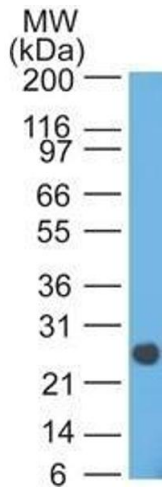
Preservative: Sodium azide

Precaution of Use: This product contains Sodium azide: a POISONOUS AND HAZARDOUS SUBSTANCE which should be handled by trained staff only.

Storage: 4 °C, -80 °C

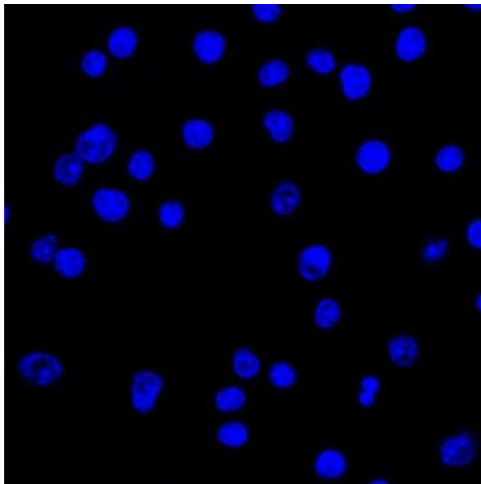
Storage Comment: Antibody with azide - store at 2 to 8°C. Antibody without azide - store at -20 to -80°C. Antibody is stable for 24 months. Non-hazardous. No MSDS required.

Expiry Date: 24 months



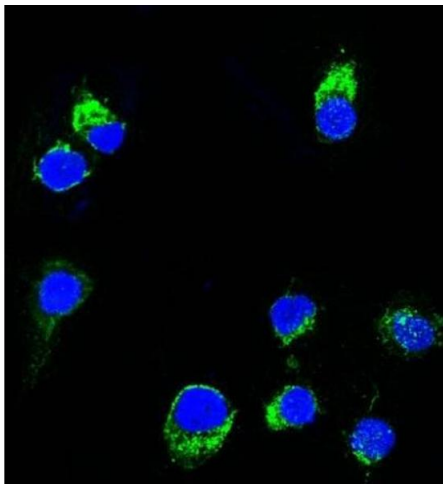
Western Blotting

Image 1. Western Blot analysis of human intestinal lysate using Lambda Light Chain Mouse Monoclonal Antibody (HP6054).



Immunofluorescence

Image 2. Confocal Immunofluorescent analysis of Ramos cells using AF488-labeled Isotype Control MAb (IgG2a) (Green). DAPI was used to stain the cell nuclei (blue). (Negative Control)



Immunofluorescence

Image 3. Confocal Immunofluorescent analysis of Ramos cells using AF488-labeled Lambda Light Chain Monoclonal Antibody (HP6054) (Green). DAPI was used to stain the cell nuclei (blue).

Please check the [product details page](#) for more images. Overall 5 images are available for ABIN6939758.