



Datasheet for ABIN6939763

## anti-IgL antibody



[Go to Product page](#)

### 2 Images

#### Overview

Quantity:	100 µg
Target:	IgL
Reactivity:	Human
Host:	Mouse
Clonality:	Monoclonal
Application:	Western Blotting (WB), Flow Cytometry (FACS), Immunohistochemistry (IHC), Immunofluorescence (IF), Staining Methods (StM)

#### Product Details

Immunogen:	Purified IgG from human serum
Clone:	N10-2
Isotype:	IgG1 kappa
Specificity:	This MAb is specific to lambda light chain of immunoglobulin and shows no cross-reaction with lambda light chain or any of the five heavy chains. In mammals, the two light chains in an antibody are always identical, with only one type of light chain, kappa or lambda. The ratio of Kappa to Lambda is 70:30. However, with the occurrence of multiple myeloma or other B-cell malignancies this ratio is disturbed. Antibody to the lambda light chain is reportedly useful in the identification of leukemias, plasmacytomas, and certain non-Hodgkin's lymphomas. Demonstration of clonality in lymphoid infiltrates indicates that the infiltrate is malignant.
Purification:	Purified by Protein A/G

## Target Details

---

Target: IgL

Abstract: [IgL Products](#)

Molecular Weight: ~22.5kDa

Gene ID: 3535, 3546

UniProt: [P01701](#), [P01842](#)

## Application Details

---

Application Notes: Positive Control: 293T, Raji or hPBL cells. Tonsil or Spleen.  
Known Application: Flow Cytometry (0.5-1 µg/million cells in 0.1ml), Immunofluorescence (1-2 µg/mL), Western Blot (0.5-1 µg/mL), Immunohistochemistry (Formalin-fixed) (0.5-1 µg/mL for 30 minutes at RT)(Staining of formalin-fixed tissues requires boiling tissue sections in 10 mM Citrate Buffer, pH 6.0, for 10-20 min followed by cooling at RT for 20 minutes)Optimal dilution for a specific application should be determined.

Restrictions: For Research Use only

## Handling

---

Concentration: 200 µg/mL

Buffer: 10 mM PBS with 0.05 % BSA & 0.05 % azide.

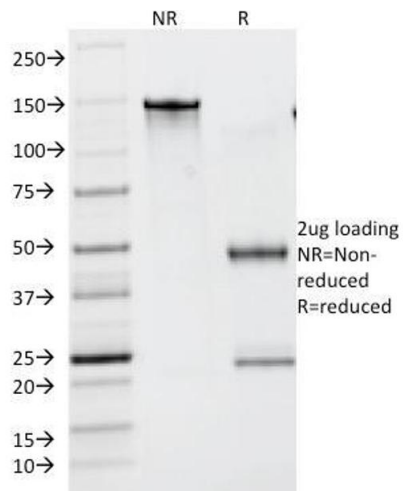
Preservative: Sodium azide

Precaution of Use: This product contains Sodium azide: a POISONOUS AND HAZARDOUS SUBSTANCE which should be handled by trained staff only.

Storage: 4 °C, -80 °C

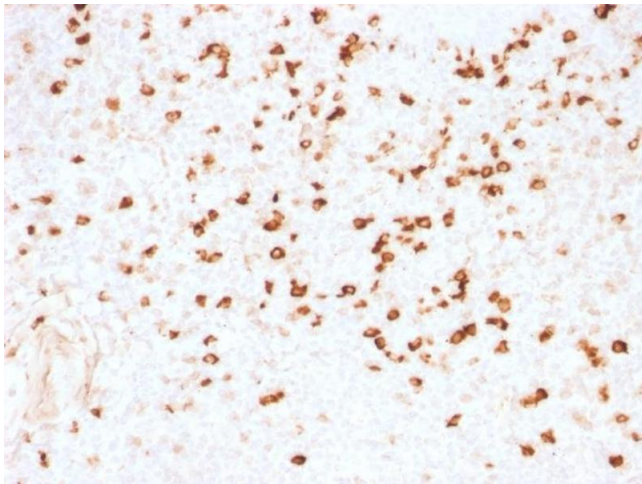
Storage Comment: Antibody with azide - store at 2 to 8°C. Antibody without azide - store at -20 to -80°C. Antibody is stable for 24 months. Non-hazardous. No MSDS required.

Expiry Date: 24 months



### SDS-PAGE

**Image 1.** SDS-PAGE Analysis Purified Lambda Light Chain Monoclonal Antibody (N10/2). Confirmation of Purity and Integrity of Antibody.



### Immunohistochemistry

**Image 2.** Formalin-fixed, paraffin-embedded human Tonsil stained with Lambda Light Chain Monoclonal Antibody (N10/2).