



[Go to Product page](#)

Datasheet for ABIN6939766

Recombinant anti-IgL antibody

3 Images

Overview

| | |
|----------------|--|
| Quantity: | 100 µg |
| Target: | IgL |
| Reactivity: | Human |
| Host: | Rabbit |
| Antibody Type: | Recombinant Antibody |
| Clonality: | Monoclonal |
| Conjugate: | This IgL antibody is un-conjugated |
| Application: | Immunohistochemistry (IHC), Staining Methods (StM) |

Product Details

| | |
|---------------|--|
| Immunogen: | Recombinant full-length human IGL protein |
| Clone: | LLC-3778R |
| Isotype: | IgG |
| Specificity: | This MAb is specific to lambda light chain of immunoglobulin and shows no cross-reaction with lambda light chain or any of the five heavy chains. In mammals, the two light chains in an antibody are always identical, with only one type of light chain, kappa or lambda. The ratio of Kappa to Lambda is 70:30. However, with the occurrence of multiple myeloma or other B-cell malignancies this ratio is disturbed. Antibody to the lambda light chain is reportedly useful in the identification of leukemias, plasmacytomas, and certain non-Hodgkin's lymphomas. Demonstration of clonality in lymphoid infiltrates indicates that the infiltrate is malignant. |
| Purification: | Purified by Protein A/G |

Target Details

Target: IgL

Abstract: [IgL Products](#)

Molecular Weight: ~22.5kDa

Gene ID: 3535, 3546

UniProt: [P01701](#), [P01842](#)

Application Details

Application Notes: Positive Control: 293T, Raji or hPBL cells. Tonsil or Spleen.
Known Application: Immunohistochemistry (Formalin-fixed) (0.1-0.2 µg/mL for 30 min at RT)(Staining of formalin-fixed tissues requires boiling tissue sections in 10 mM citrate buffer, pH 6.0, for 10-20 min followed by cooling at RT for 20 minutes)Optimal dilution for a specific application should be determined.

Restrictions: For Research Use only

Handling

Concentration: 200 µg/mL

Buffer: 10 mM PBS with 0.05 % BSA & 0.05 % azide.

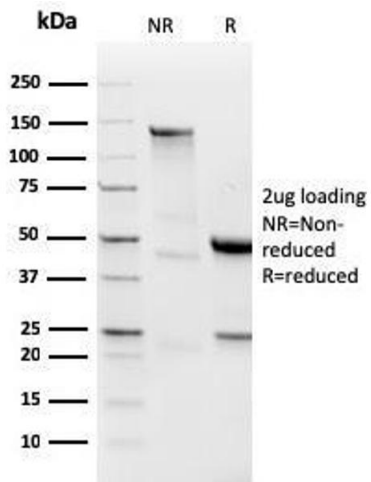
Preservative: Sodium azide

Precaution of Use: This product contains Sodium azide: a POISONOUS AND HAZARDOUS SUBSTANCE which should be handled by trained staff only.

Storage: 4 °C,-80 °C

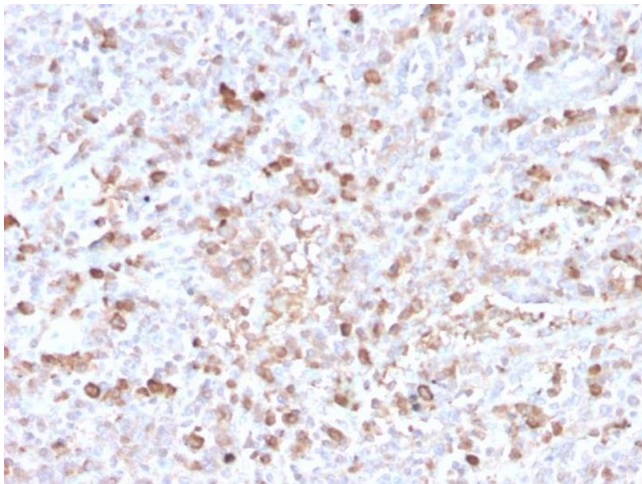
Storage Comment: Antibody with azide - store at 2 to 8°C. Antibody without azide - store at -20 to -80°C. Antibody is stable for 24 months. Non-hazardous. No MSDS required.

Expiry Date: 24 months



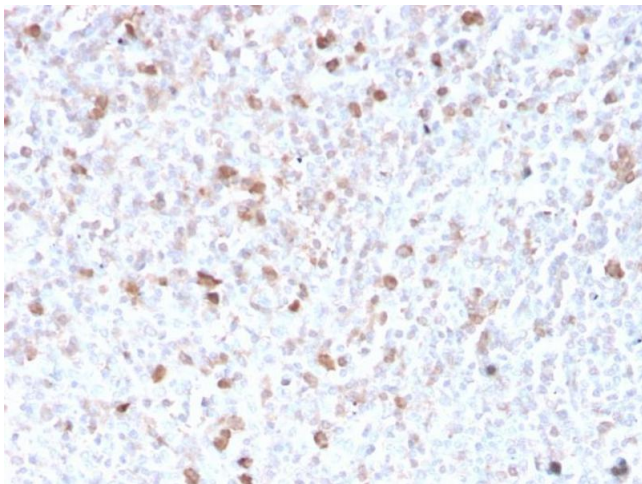
SDS-PAGE

Image 1. SDS-PAGE Analysis Purified Lambda Light Chain Recombinant Rabbit Monoclonal Antibody (LLC/3778R). Confirmation of Integrity and Purity of Antibody



Immunohistochemistry

Image 2. Formalin-fixed, paraffin-embedded human spleen stained with Lambda Light Chain Recombinant Rabbit Monoclonal Antibody (LLC/3778R).



Immunohistochemistry

Image 3. Formalin-fixed, paraffin-embedded human spleen stained with Lambda Light Chain Recombinant Rabbit Monoclonal Antibody (LLC/3778R).