

Datasheet for ABIN6939767

anti-Prostate Specific Antigen antibody**2** Images[Go to Product page](#)

Overview

Quantity:	100 µg
Target:	Prostate Specific Antigen (PSA)
Reactivity:	Human
Host:	Mouse
Clonality:	Monoclonal
Conjugate:	This Prostate Specific Antigen antibody is un-conjugated
Application:	Immunohistochemistry (IHC), Staining Methods (StM)

Product Details

Immunogen:	PSA (p30) from human sperm plasma
Clone:	A67-B-E3
Isotype:	IgG1 kappa
Specificity:	Recognizes a single protein of 33-34 kDa, identified as the prostate specific antigen (PSA). This MAb is highly specific to PSA and stains prostatic secretory and ductal epithelium in both normal and neoplastic tissues. PSA is a chymotrypsin-like serine protease (kallikrein family) exclusively produced by the prostate epithelium, and abundant in seminal fluid. PSA can be detected in the sera of patients with prostatic carcinoma. It is predominantly complexed to a liver-derived serine protease inhibitor, alpha-1-antichymotrypsin (ACT). A higher proportion of serum PSA is complexed to ACT in prostate cancer than in benign prostate hyperplasia. This MAb makes an excellent pair with MAb 1A7G6B6 for PSA tests.
Purification:	Purified by Protein A/G

Target Details

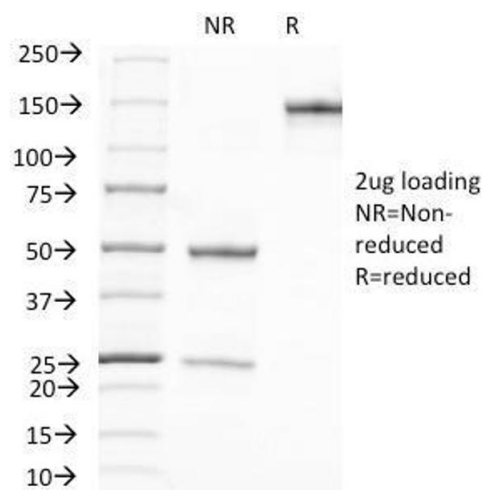
Target:	Prostate Specific Antigen (PSA)
Alternative Name:	KLK3 (PSA Products)
Molecular Weight:	33-34kDa
Gene ID:	354
UniProt:	P07288
Pathways:	Complement System

Application Details

Application Notes:	Positive Control: PC12 cells. Normal prostate or prostate carcinoma. Known Application: Immunohistochemistry (Formalin-fixed) (1-2 µg/mL for 30 minutes at RT) (Staining of formalin-fixed tissues requires boiling tissue sections in 10 mM citrate buffer, pH 6.0, for 10-20 min followed by cooling at RT for 20 minutes)Optimal dilution for a specific application should be determined.
Restrictions:	For Research Use only

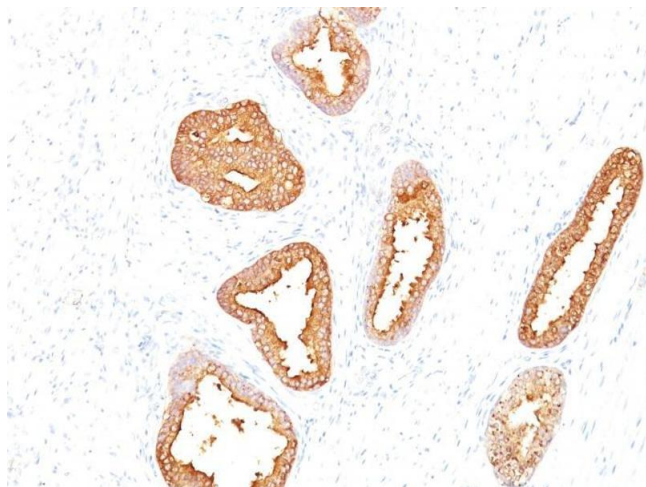
Handling

Concentration:	200 µg/mL
Buffer:	10 mM PBS with 0.05 % BSA & 0.05 % azide.
Preservative:	Sodium azide
Precaution of Use:	This product contains Sodium azide: a POISONOUS AND HAZARDOUS SUBSTANCE which should be handled by trained staff only.
Storage:	4 °C, -80 °C
Storage Comment:	Antibody with azide - store at 2 to 8°C. Antibody without azide - store at -20 to -80°C. Antibody is stable for 24 months. Non-hazardous. No MSDS required.
Expiry Date:	24 months



SDS-PAGE

Image 1. SDS-PAGE Analysis Purified PSA Mouse Monoclonal Antibody (A67-B/E3). Confirmation of Integrity and Purity of Antibody.



Immunohistochemistry

Image 2. Formalin-fixed, paraffin-embedded human Prostate Carcinoma stained with PSA Mouse Monoclonal Antibody (A67-B/E3).