

Datasheet for ABIN6939835

**Recombinant anti-Involucrin antibody****2** Images[Go to Product page](#)

## Overview

Quantity:	100 µg
Target:	Involucrin (IVL)
Reactivity:	Human, Pig, Dog, Gorilla, Owl Monkey
Host:	Mouse
Antibody Type:	Recombinant Antibody
Clonality:	Monoclonal
Conjugate:	This Involucrin antibody is un-conjugated
Application:	Immunohistochemistry (IHC), Immunostaining (Ist), Staining Methods (StM)

## Product Details

Immunogen:	Recombinant human full-length Involucrin protein (IVRN)
Clone:	RIVRN-827
Isotype:	IgG1 kappa
Specificity:	It recognizes a protein of 66 kDa-170 kDa, identified as involucrin. In Western blotting of cultured human keratinocytes, this MAb reacts with a 120 kDa protein. It stains the involucrin in a variety of sizes: 170 kDa in MCF-7 cells, a doublet of ~115 kDa and 150 kDa in gorilla and owl monkey, 66 kDa in dog, and a doublet of 105 kDa in pig. Its epitope maps between codon 421-568 of human involucrin. Involucrin is expressed in a range of stratified squamous epithelia, including the cornea, which lacks a distinct cornified layer. In normal epidermis, it is first expressed in the upper spinous layers, and in keratinocyte cultures, all cells that have left the basal layer express it. Involucrin expression is altered in pathological conditions: in psoriasis

## Product Details

and other benign epidermal hyperplasias, involucrin expression begins closer to the basal layer than normal, expression is abnormal in squamous cell carcinomas and premalignant lesions, and is reduced in severe dysplasias of the larynx and cervix.

No Cross-Reactivity: Mouse (Murine)

Purification: Purified by Protein A/G

## Target Details

Target: Involucrin (IVL)

Alternative Name: IVL ([IVL Products](#))

Molecular Weight: 66-170kDa

Gene ID: 3713

UniProt: [P07476](#)

## Application Details

Application Notes: Positive Control: MCF-7 cells. Localized to upper spinous and granular layers in normal skin.  
Known Application: Immunohistochemistry (Formalin-fixed) (0.1-0.2 µg/mL for 30 min at RT),(Staining of formalin-fixed tissues is enhanced by digestion with trypsin or Protease XXV at 1 mg/mL PBS for 5 min at 37°C) (Note than enzyme digestion is better than citrate buffer based epitope unmasking),Optimal dilution for a specific application should be determined.

Restrictions: For Research Use only

## Handling

Concentration: 200 µg/mL

Buffer: 10 mM PBS with 0.05 % BSA & 0.05 % azide.

Preservative: Sodium azide

Precaution of Use: This product contains Sodium azide: a POISONOUS AND HAZARDOUS SUBSTANCE which should be handled by trained staff only.

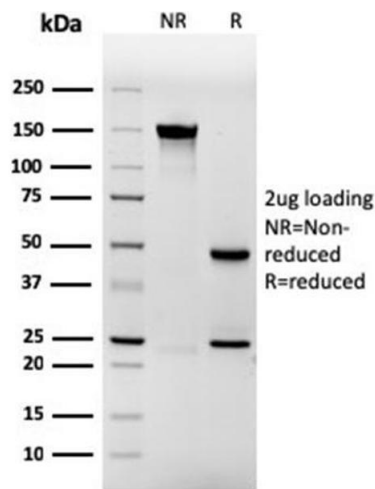
Storage: 4 °C,-80 °C

Storage Comment: Antibody with azide - store at 2 to 8°C. Antibody without azide - store at -20 to -80°C. Antibody is stable for 24 months. Non-hazardous. No MSDS required.

Handling

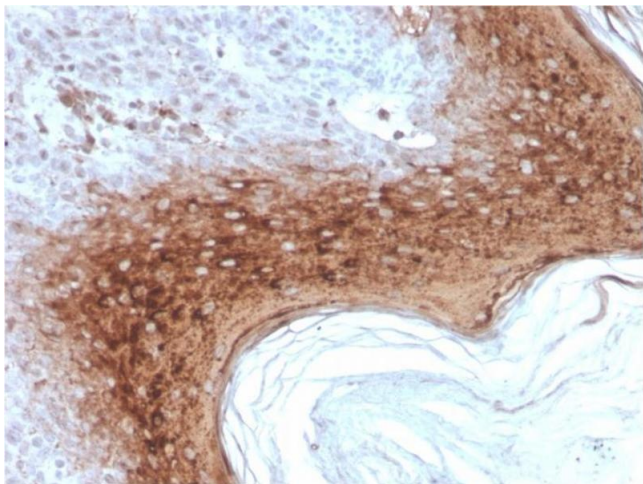
Expiry Date: 24 months

Images



SDS-PAGE

**Image 1.** SDS-PAGE Analysis Purified Involucrin Mouse Recombinant Monoclonal Antibody (rIVRN/827). Confirmation of Purity and Integrity of Antibody.



Immunohistochemistry

**Image 2.** Formalin-fixed, paraffin-embedded human Skin stained with Involucrin Mouse Recombinant Monoclonal Antibody (rIVRN/827).