

Datasheet for ABIN6939839

anti-JUP antibody

4 Images

[Go to Product page](#)

Overview

Quantity:	100 µg
Target:	JUP
Reactivity:	Human, Mouse, Rat, Chicken, Cow, Dog, Cat
Host:	Mouse
Clonality:	Monoclonal
Conjugate:	This JUP antibody is un-conjugated
Application:	Western Blotting (WB), Immunofluorescence (IF), Flow Cytometry (FACS)

Product Details

Immunogen:	Recombinant, full length chicken Catenin gamma protein
Clone:	15F11
Isotype:	IgG1 kappa
Specificity:	It recognizes a protein of 80-87 kDa, identified as gamma-catenin. The catenins (-T-catenin, is located on chromosome 10, and mutations in this gene show a strong correlation to late-onset Alzheimer's disease (LOAD) as well as to dilated cardiomyopathy.
Purification:	Purified by Protein A/G

Target Details

Target:	JUP
Alternative Name:	JUP (JUP Products)

Target Details

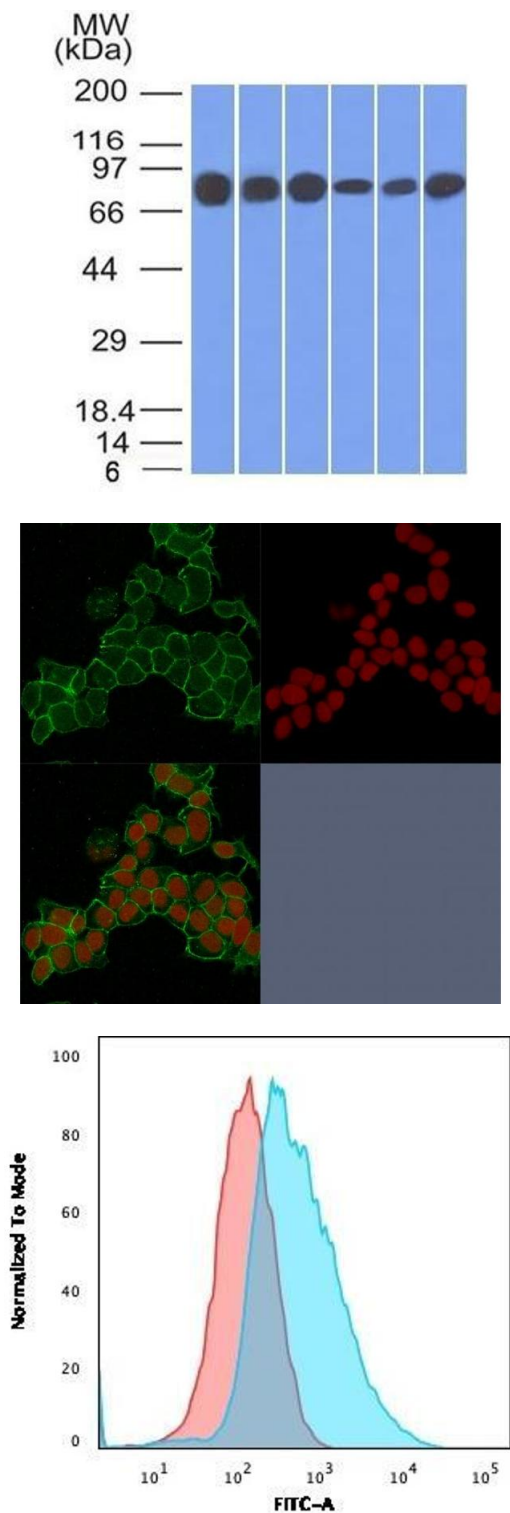
Molecular Weight:	80-87kDa
Gene ID:	3728
UniProt:	P14923
Pathways:	Cell-Cell Junction Organization , Maintenance of Protein Location

Application Details

Application Notes:	Positive Control: HeLa, SK-BR3, A431, HT20, 293, HepG2, A549 or MCF-7 cells. Skin. Known Application: Flow Cytometry (1-2 µg/million cells), Immunofluorescence (1-2 µg/mL), Western Blot (0.5-1.0 µg/mL)Optimal dilution for a specific application should be determined.
Restrictions:	For Research Use only

Handling

Concentration:	200 µg/mL
Buffer:	10 mM PBS with 0.05 % BSA & 0.05 % azide.
Preservative:	Sodium azide
Precaution of Use:	This product contains Sodium azide: a POISONOUS AND HAZARDOUS SUBSTANCE which should be handled by trained staff only.
Storage:	4 °C,-80 °C
Storage Comment:	Antibody with azide - store at 2 to 8°C. Antibody without azide - store at -20 to -80°C. Antibody is stable for 24 months. Non-hazardous. No MSDS required.
Expiry Date:	24 months



Western Blotting

Image 1. Western Blot of HT20, 293, A431, MCF-7, HepG2 and A549 cell lysates using Catenin, gamma Mouse Monoclonal Antibody (15F11).

Immunofluorescence

Image 2. Confocal immunofluorescence image of HeLa cells using Catenin, gamma Mouse Monoclonal Antibody (15F11) Green (CF488) and Reddot is used to label the nuclei Red.

Flow Cytometry

Image 3. Flow Cytometric Analysis of PFA-fixed MCF cells. Catenin, gamma Mouse Monoclonal Antibody (11E4) followed by goat anti-Mouse IgG-CF488 (Blue); Isotype Control (Red).

Please check the [product details page](#) for more images. Overall 4 images are available for ABIN6939839.