

Datasheet for ABIN6939842

Recombinant anti-JUP antibody**3** Images[Go to Product page](#)

Overview

Quantity:	100 µg
Target:	JUP
Reactivity:	Human
Host:	Mouse
Antibody Type:	Recombinant Antibody
Clonality:	Monoclonal
Conjugate:	This JUP antibody is un-conjugated
Application:	Western Blotting (WB), Immunofluorescence (IF), Flow Cytometry (FACS), ELISA, Coating (Coat)

Product Details

Immunogen:	Recombinant human gamma catenin protein
Clone:	RCTNG-1664
Isotype:	IgG1 kappa
Specificity:	It recognizes a protein of 80-87 kDa, identified as gamma-catenin. The catenins (-T-catenin, is located on chromosome 10, and mutations in this gene show a strong correlation to late-onset Alzheimer's disease (LOAD) as well as to dilated cardiomyopathy.
Purification:	Purified by Protein A/G

Target Details

Target:	JUP
---------	-----

Target Details

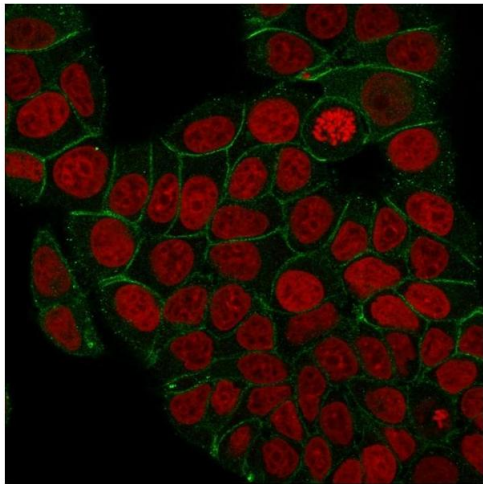
Alternative Name:	JUP (JUP Products)
Molecular Weight:	80-87kDa
Gene ID:	3728
UniProt:	P14923
Pathways:	Cell-Cell Junction Organization , Maintenance of Protein Location

Application Details

Application Notes:	Positive Control: A431, T47D or MCF-7 cells. Skin. Known Application: ELISA (For coating, order Ab without BSA), Flow Cytometry (1-2 µg/million cells), Immunofluorescence (1-2 µg/mL), Western Blot (1-2 µg/mL), Optimal dilution for a specific application should be determined.
Restrictions:	For Research Use only

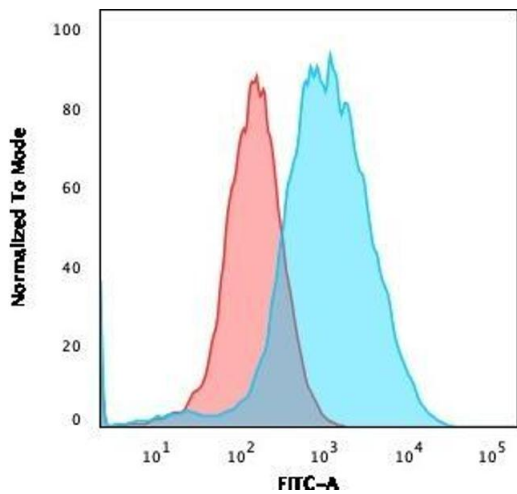
Handling

Concentration:	200 µg/mL
Buffer:	10 mM PBS with 0.05 % BSA & 0.05 % azide.
Preservative:	Sodium azide
Precaution of Use:	This product contains Sodium azide: a POISONOUS AND HAZARDOUS SUBSTANCE which should be handled by trained staff only.
Storage:	4 °C, -80 °C
Storage Comment:	Antibody with azide - store at 2 to 8°C. Antibody without azide - store at -20 to -80°C. Antibody is stable for 24 months. Non-hazardous. No MSDS required.
Expiry Date:	24 months



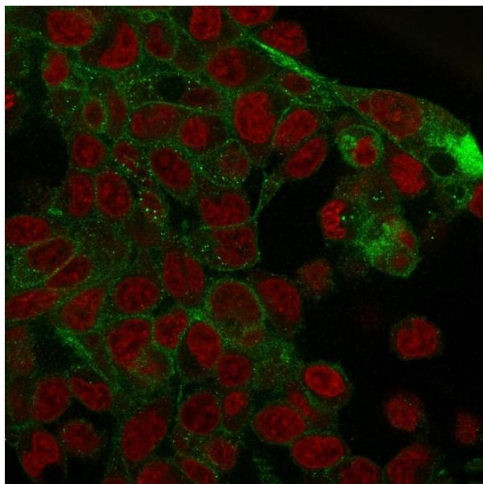
Immunofluorescence

Image 1. Immunofluorescence staining of PFA-fixed MCF-7 cells with Catenin, gamma Mouse Monoclonal Antibody (rCTNG/1664) followed by goat anti-Mouse IgG-CF488 (Green). Nuclei are labeled with Reddot (Red).



Flow Cytometry

Image 2. Flow Cytometric Analysis of PFA-fixed MCF-7 cells using Catenin, gamma Mouse Monoclonal Antibody (rCTNG/1664) followed by goat anti-Mouse IgG-CF488 (Blue); Isotype Control (Red).



Immunofluorescence

Image 3. Immunofluorescence staining of PFA-fixed HepG2 cells with Catenin, gamma Mouse Monoclonal Antibody (rCTNG/1664) followed by goat anti-Mouse IgG-CF488 (Green). Nuclei are labeled with Reddot (Red).