

Datasheet for ABIN6939864  
**anti-Cytokeratin 5 antibody (AA 316-590)**

## 6 Images

[Go to Product page](#)

## Overview

Quantity:	100 µg
Target:	Cytokeratin 5 (KRT5)
Binding Specificity:	AA 316-590
Reactivity:	Human
Host:	Mouse
Clonality:	Monoclonal
Conjugate:	This Cytokeratin 5 antibody is un-conjugated
Application:	Immunohistochemistry (IHC), Staining Methods (StM)

## Product Details

Immunogen:	Recombinant fragment (around aa 316-590) of human Cytokeratin 5 (KRT5) protein (exact sequence is proprietary)
Clone:	KRT5-3594
Isotype:	IgG1 kappa
Specificity:	This MAb recognizes a protein of 58 kDa, which is identified as Cytokeratin 5 (KRT5). This type II cytokeratin is specifically expressed in the basal layer of the epidermis with family member KRT14. Antibodies to KRT5 identify basal cells of squamous and glandular epithelia, myoepithelia, and mesothelium. Anti-cytokeratin 5 has been reported useful in the differential diagnosis of metastatic carcinoma in the pleura versus epithelioid mesothelioma. Almost all squamous cell carcinomas, half of transitional carcinomas, and many undifferentiated large cell carcinomas express. Anti-KRT5, along with anti-p63, affords a high sensitivity and specificity for

## Product Details

squamous differentiation. Myoepithelial cells of the breast, glandular epithelia, and basal cells of the prostate are labeled with anti-KRT5.

Purification: Purified by Protein A/G

## Target Details

Target: Cytokeratin 5 (KRT5)

Alternative Name: KRT5 ([KRT5 Products](#))

Molecular Weight: 58kDa

Gene ID: 3852

UniProt: [P13647](#)

## Application Details

Application Notes: Positive Control: MCF-7 or HeLa cells. Human tonsil, esophagus or bladder tissue (IHC).  
Known Application: Immunohistochemistry (Formalin-fixed) (1-2 µg/mL for 30 minutes at RT),(Staining of formalin-fixed tissues requires boiling tissue sections in 10 mM Citrate Buffer, pH 6.0, for 10-20 min followed by cooling at RT for 20 minutes),Optimal dilution for a specific application should be determined.

Restrictions: For Research Use only

## Handling

Concentration: 200 µg/mL

Buffer: 10 mM PBS with 0.05 % BSA & 0.05 % azide.

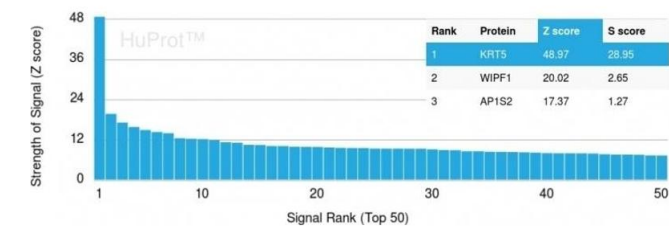
Preservative: Sodium azide

Precaution of Use: This product contains Sodium azide: a POISONOUS AND HAZARDOUS SUBSTANCE which should be handled by trained staff only.

Storage: 4 °C,-80 °C

Storage Comment: Antibody with azide - store at 2 to 8°C. Antibody without azide - store at -20 to -80°C. Antibody is stable for 24 months. Non-hazardous. No MSDS required.

Expiry Date: 24 months

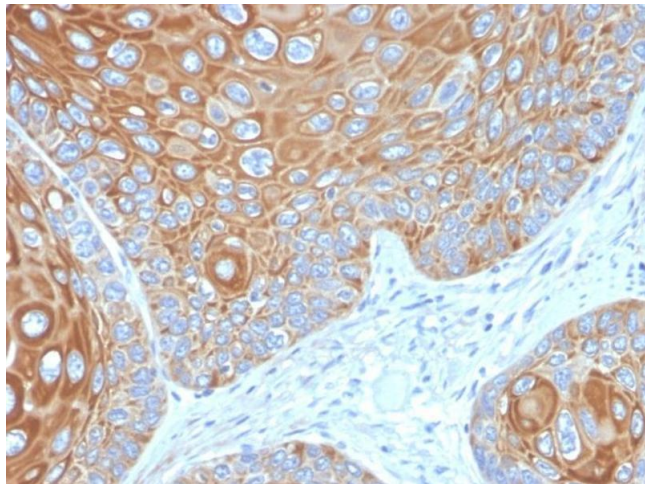


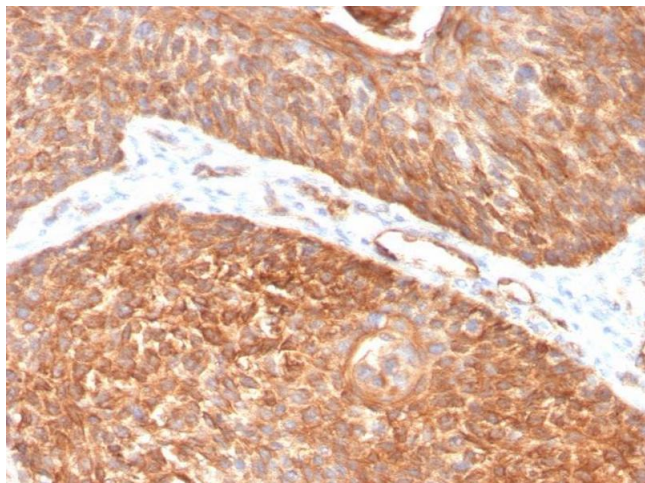
### Protein Array

**Image 1.** Analysis of Protein Array containing more than 19,000 full-length human proteins using Cytokeratin 5 Mouse Monoclonal Antibody (KRT5/3594). Z- and S- Score: The Z-score represents the strength of a signal that a monoclonal antibody (MAb) (in combination with a fluorescently-tagged anti-IgG secondary antibody) produces when binding to a particular protein on the HuProt™ array. Z-scores are described in units of standard deviations (SD's) above the mean value of all signals generated on that array. If targets on HuProt™ are arranged in descending order of the Z-score, the S-score is the difference (also in units of SD's) between the Z-score. S-score therefore represents the relative target specificity of a MAb to its intended target. A MAb is considered to specific to its intended target, if the MAb has an S-score of at least 2.5. For example, if a MAb binds to protein X with a Z-score of 43 and to protein Y with a Z-score of 14, then the S-score for the binding of that MAb to protein X is equal to 29.

### Immunohistochemistry

**Image 2.** Formalin-fixed, paraffin-embedded human Cervical Carcinoma stained with Cytokeratin 5 Mouse Monoclonal Antibody (KRT5/3594).





#### Immunohistochemistry

**Image 3.** Formalin-fixed, paraffin-embedded human Pancreas stained with Cytokeratin 5 Mouse Monoclonal Antibody (KRT5/3594).

Please check the [product details page](#) for more images. Overall 6 images are available for ABIN6939864.