

Datasheet for ABIN6939867

anti-KRT6A antibody**6** Images[Go to Product page](#)

Overview

Quantity:	100 µg
Target:	KRT6A
Reactivity:	Human
Host:	Mouse
Clonality:	Monoclonal
Conjugate:	This KRT6A antibody is un-conjugated
Application:	Immunohistochemistry (IHC), Flow Cytometry (FACS), Staining Methods (StM)

Product Details

Immunogen:	Recombinant full-length human Cytokeratin 6A (KRT6A) protein
Clone:	KRT6A-2368
Isotype:	IgG2a kappa
Specificity:	<p>This MAb recognizes a protein of 56 kDa, identified as cytokeratin 6A (KRT6A). In humans, multiple isoforms of Cytokeratin 6 (6A-6F), encoded by several highly homologous genes, have distinct tissue expression patterns. Cytokeratin 6A is the dominant form in epithelial tissue.</p> <p>Cytokeratin 6 and 16 are expressed in keratinocytes, which are undergoing rapid turnover in the suprabasal region (also known as hyper-proliferation-related keratins). Cytokeratin 6 is found in hair follicles, suprabasal cells of a variety of internal stratified epithelia, in epidermis, in both normal and hyper-proliferative situations. Epidermal injury results in activation of keratinocytes, which express KRT6 and KRT16. KRT6 is strongly expressed in about 75 % of head and neck squamous cell carcinomas..</p>

Product Details

Purification: Purified by Protein A/G

Target Details

Target: KRT6A

Alternative Name: KRT6A ([KRT6A Products](#))

Molecular Weight: 56kDa

Gene ID: 3853

UniProt: [P02538](#)

Application Details

Application Notes: Positive Control: HeLa cells, Tonsil or Basal Cell Carcinoma (BCC).
Known Application: Flow Cytometry (1-2 µg/million cells), Immunohistochemistry (Formalin-fixed) (1-2 µg/mL for 30 minutes at RT)(Staining of formalin-fixed tissues requires boiling tissue sections in 10 mM Citrate Buffer, pH 6.0, for 10-20 min followed by cooling at RT for 20 minutes)Optimal dilution for a specific application should be determined.

Restrictions: For Research Use only

Handling

Concentration: 200 µg/mL

Buffer: 10 mM PBS with 0.05 % BSA & 0.05 % azide.

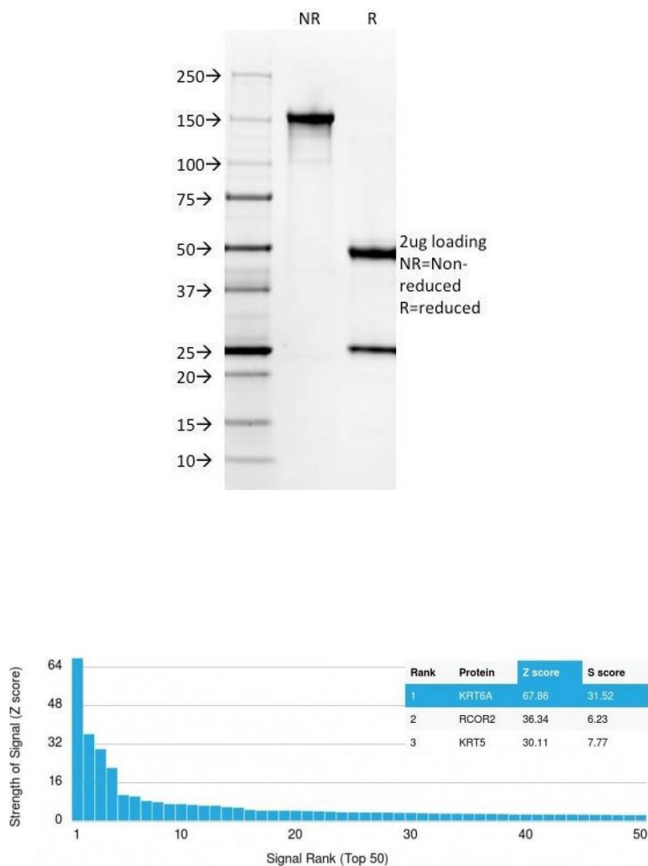
Preservative: Sodium azide

Precaution of Use: This product contains Sodium azide: a POISONOUS AND HAZARDOUS SUBSTANCE which should be handled by trained staff only.

Storage: 4 °C, -80 °C

Storage Comment: Antibody with azide - store at 2 to 8°C. Antibody without azide - store at -20 to -80°C. Antibody is stable for 24 months. Non-hazardous. No MSDS required.

Expiry Date: 24 months

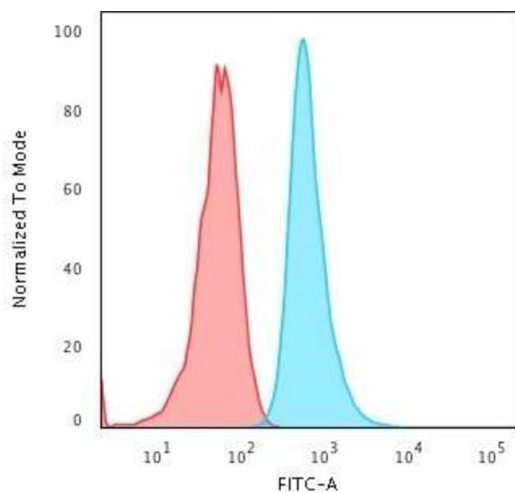


SDS-PAGE

Image 1. SDS-PAGE Analysis Purified Cytokeratin 6A (KRT6A) Mouse Monoclonal Antibody (KRT6A/2368). Confirmation of Integrity and Purity of Antibody.

Protein Array

Image 2. Analysis of Protein Array containing more than 19,000 full-length human proteins using Cytokeratin 6A (KRT6A) Mouse Monoclonal Antibody (KRT6A/2368). Z- and S- Score: The Z-score represents the strength of a signal that a monoclonal antibody (MAb) (in combination with a fluorescently-tagged anti-IgG secondary antibody) produces when binding to a particular protein on the HuProt™ array. Z-scores are described in units of standard deviations (SD's) above the mean value of all signals generated on that array. If targets on HuProt™ are arranged in descending order of the Z-score, the S-score is the difference (also in units of SD's) between the Z-score. S-score therefore represents the relative target specificity of a MAb to its intended target. A MAb is considered to specific to its intended target, if the MAb has an S-score of at least 2.5. For example, if a MAb binds to protein X with a Z-score of 43 and to protein Y with a Z-score of 14, then the S-score for the binding of that MAb to protein X is equal to 29.



Flow Cytometry

Image 3. Flow Cytometric Analysis of HeLa cells using KRT6A Mouse Monoclonal Antibody (KRT6A/2368) followed by Goat anti-Mouse IgG-CF488 (Blue); Isotype Control (Red).

Please check the [product details page](#) for more images. Overall 6 images are available for ABIN6939867.