

Datasheet for ABIN6939869

Recombinant anti-Cytokeratin 7 antibody

5 Images

[Go to Product page](#)

Overview

Quantity:	100 µg
Target:	Cytokeratin 7 (KRT7)
Reactivity:	Human
Host:	Mouse
Antibody Type:	Recombinant Antibody
Clonality:	Monoclonal
Conjugate:	This Cytokeratin 7 antibody is un-conjugated
Application:	Immunohistochemistry (IHC), Western Blotting (WB), Flow Cytometry (FACS), Staining Methods (StM)

Product Details

Immunogen:	Recombinant full-length human KRT7 protein
Clone:	ROV-TL12-30
Isotype:	IgG1 kappa
Specificity:	It recognizes an intermediate filament protein (IFP) of 55 kDa, which is identified as cytokeratin 7. This MAb is highly specific to cytokeratin 7 and shows no cross-reaction with other IFPs. Cytokeratin 7 is a basic cytokeratin, which is found in most glandular and transitional epithelia but not in the stratified squamous epithelia. Keratin 7 is expressed in the epithelial cells of ovary, lung, and breast but not of colon, prostate, or gastrointestinal tract. This MAb is highly useful in distinguishing ovarian carcinomas (keratin 7+) from colon carcinomas (keratin 7-).
Purification:	Purified by Protein A/G

Target Details

Target: Cytokeratin 7 (KRT7)

Alternative Name: KRT7 ([KRT7 Products](#))

Molecular Weight: 55kDa

Gene ID: 3855

UniProt: [P08729](#)

Application Details

Application Notes: Positive Control: HeLa cells. Carcinoma of ovary, lung, cervix or breast.
Known Application: Western Blot (1-2 µg/mL), Flow Cytometry (1-2 µg/million cells), Immunohistochemistry (Formalin-fixed) (0.5-1.0 µg/mL for 30 minutes at RT)(Staining of formalin-fixed tissues requires boiling tissue sections in 10 mM Citrate Buffer, pH 6.0, for 10-20 min followed by cooling at RT for 20 minutes)Optimal dilution for a specific application should be determined.

Restrictions: For Research Use only

Handling

Concentration: 200 µg/mL

Buffer: 10 mM PBS with 0.05 % BSA & 0.05 % azide.

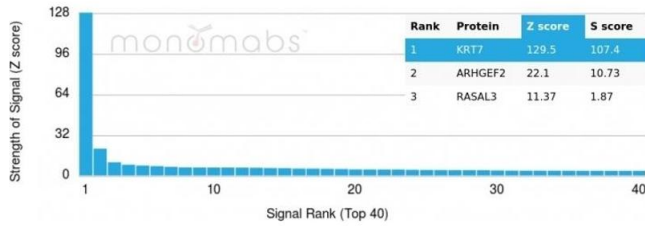
Preservative: Sodium azide

Precaution of Use: This product contains Sodium azide: a POISONOUS AND HAZARDOUS SUBSTANCE which should be handled by trained staff only.

Storage: 4 °C, -80 °C

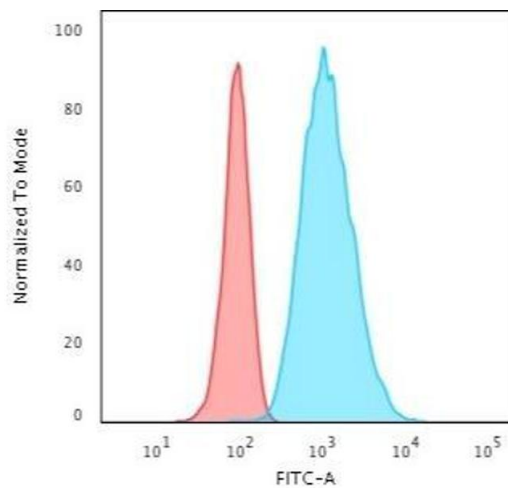
Storage Comment: Antibody with azide - store at 2 to 8°C. Antibody without azide - store at -20 to -80°C. Antibody is stable for 24 months. Non-hazardous. No MSDS required.

Expiry Date: 24 months



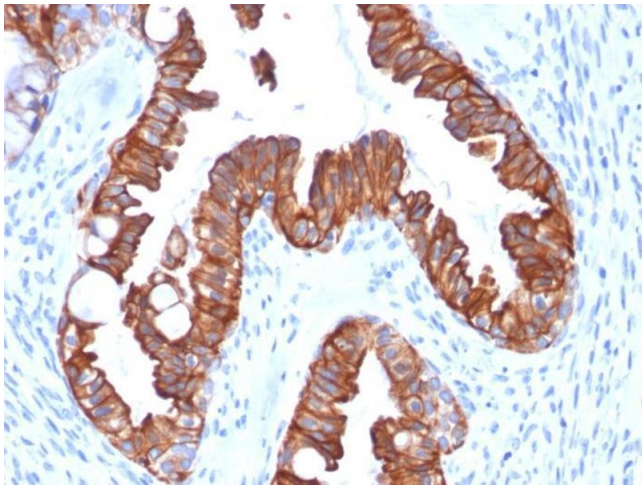
Protein Array

Image 1. Analysis of Protein Array containing more than 19,000 full-length human proteins using Cytokeratin 7 Monospecific Recombinant Mouse Monoclonal Antibody (rOV-TL12/30). Z- and S- Score: The Z-score represents the strength of a signal that a monoclonal antibody (MAb) (in combination with a fluorescently-tagged anti-IgG secondary antibody) produces when binding to a particular protein on the HuProt™ array. Z-scores are described in units of standard deviations (SDs) above the mean value of all signals generated on that array. If targets on HuProt™ are arranged in descending order of the Z-score, the S-score is the difference (also in units of SDs) between the Z-score. S-score therefore represents the relative target specificity of a MAb to its intended target. A MAb is considered to specific to its intended target, if the MAb has an S-score of at least 2.5. For example, if a MAb



Flow Cytometry

Image 2. Flow Cytometric Analysis of HeLa cells using CK7 Recombinant Mouse Monoclonal Antibody (rOV-TL12/30) followed by Goat anti-Mouse IgG-CF488 (Blue); Isotype Control (Red).



Immunohistochemistry

Image 3. Formalin-fixed, paraffin-embedded human Endometrial Carcinoma stained with CK7 Recombinant Mouse Monoclonal Antibody (rOV-TL12/30).

Please check the [product details page](#) for more images. Overall 5 images are available for ABIN6939869.