



[Go to Product page](#)

Datasheet for ABIN6939903

## Recombinant anti-Keratin 10 antibody

### 2 Images

#### Overview

Quantity:	100 µg
Target:	Keratin 10 (KRT10)
Reactivity:	Human, Mouse
Host:	Rabbit
Antibody Type:	Recombinant Antibody
Clonality:	Monoclonal
Conjugate:	This Keratin 10 antibody is un-conjugated
Application:	Immunohistochemistry (IHC), Staining Methods (StM)

#### Product Details

Immunogen:	Recombinant human full-length KRT10 protein
Clone:	KRT10-1990R
Isotype:	IgG
Specificity:	This MAb recognizes a protein of 56.5 kDa, identified as cytokeratin 10 (CK10). CK10 is expressed in all suprabasal layers of the epidermis. In the epidermis, expression of CK10 strictly parallels the extent of differentiation, it is absent in the basal layer, appears in the first suprabasal layers and increases in concentration towards the granular layer. However, CK10 is rarely detected in early stages of vulvar squamous carcinomas (tumors less than 2 cm, clinical stage I) regardless of the tumor grade. In larger and more advanced tumors (greater than 2 cm, clinical stages II and III), CK10 is detected very frequently. Expression of CK10 is related to maturation of malignant keratinocytes, being preferentially detected in more-differentiated

## Product Details

---

parts.

Purification: Purified by Protein A/G

## Target Details

---

Target: Keratin 10 (KRT10)

Alternative Name: KRT10 ([KRT10 Products](#))

Molecular Weight: 56.5kDa

Gene ID: 3858

UniProt: [P13645](#)

## Application Details

---

Application Notes: Positive Control: A431, HeLa, MCF7 cells. Esophagus or tonsil.  
Known Application: Immunohistochemistry (Formalin-fixed) (1-2 µg/mL for 30 min at RT)(Staining of formalin-fixed tissues requires boiling tissue sections in 10 mM citrate buffer, pH 6.0, for 10-20 min followed by cooling at RT for 20 minutes)Optimal dilution for a specific application should be determined.

Restrictions: For Research Use only

## Handling

---

Concentration: 200 µg/mL

Buffer: 10 mM PBS with 0.05 % BSA & 0.05 % azide.

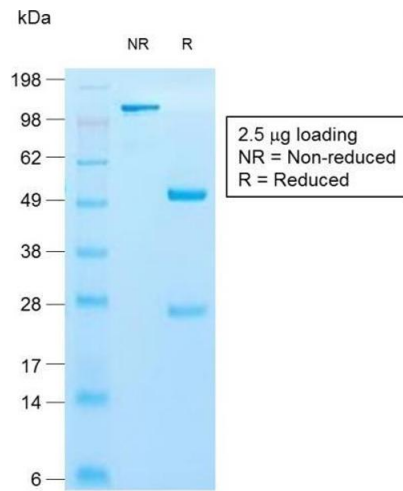
Preservative: Sodium azide

Precaution of Use: This product contains Sodium azide: a POISONOUS AND HAZARDOUS SUBSTANCE which should be handled by trained staff only.

Storage: 4 °C,-80 °C

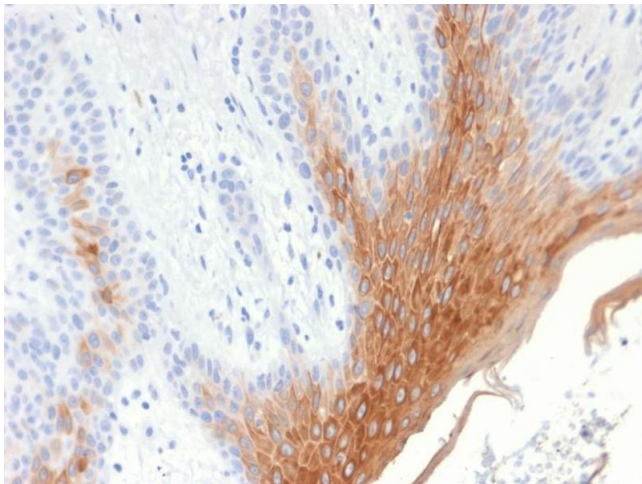
Storage Comment: Antibody with azide - store at 2 to 8°C. Antibody without azide - store at -20 to -80°C. Antibody is stable for 24 months. Non-hazardous. No MSDS required.

Expiry Date: 24 months



### SDS-PAGE

**Image 1.** SDS-PAGE Analysis of Purified Cytokeratin 10 Rabbit Recombinant Monoclonal Antibody (KRT10/1990R).



### Immunohistochemistry

**Image 2.** Formalin-fixed, paraffin-embedded human Skin stained with Cytokeratin 10 Rabbit Recombinant Monoclonal Antibody (KRT10/1990R).