



[Go to Product page](#)

Datasheet for ABIN6939909
anti-KRT15 antibody (C-Term)

2 Images

Overview

| | |
|----------------------|--|
| Quantity: | 100 µg |
| Target: | KRT15 |
| Binding Specificity: | C-Term |
| Reactivity: | Human, Rat, Cow |
| Host: | Mouse |
| Clonality: | Monoclonal |
| Conjugate: | This KRT15 antibody is un-conjugated |
| Application: | Immunohistochemistry (IHC), Staining Methods (StM) |

Product Details

| | |
|---------------|---|
| Immunogen: | A 17 amino acids synthetic peptide from the C- terminal of Human Cytokeratin 15 |
| Clone: | LHK15 |
| Isotype: | IgG2a kappa |
| Purification: | Purified by Protein A/G |

Target Details

| | |
|-------------------|--|
| Target: | KRT15 |
| Alternative Name: | KRT15 (KRT15 Products) |
| Background: | Keratin 15 is a type I keratin which is expressed only in basal keratinocytes in stratified epithelia and does not appear to have a natural type II expression partner. Keratin 15 is down regulated |

Target Details

in activated keratinocytes. Cytokeratin 15 is a specific marker of stem cells of the hair-follicle bulge and may be a useful marker for diagnosis between basal cell carcinoma (BCC) and trichoepithelioma. Trichoblastoma are benign neoplasms of follicular differentiation frequently found in nevus sebaceous. Many morphologic features are shared with nodular basal cell carcinoma, sometimes rendering a diagnosis difficult. Trichoblastoma and BCC show variable expression of Cytokeratin 15 and Cytokeratin 19, and absence of hair keratins.

Molecular Weight: 52kDa

Gene ID: 3866

UniProt: [P19012](#)

Application Details

Application Notes: Positive Control: A431 cells. Skin or Colon.
Known Application: Immunohistochemistry (Formalin-fixed) (0.1-0.2 µg/mL for 30 min at RT)(Staining of formalin-fixed tissues requires boiling tissue sections in 10 mM citrate buffer, pH 6.0, for 10-20 min followed by cooling at RT for 20 minutes)Optimal dilution for a specific application should be determined.

Restrictions: For Research Use only

Handling

Concentration: 200 µg/mL

Buffer: 10 mM PBS with 0.05 % BSA & 0.05 % azide.

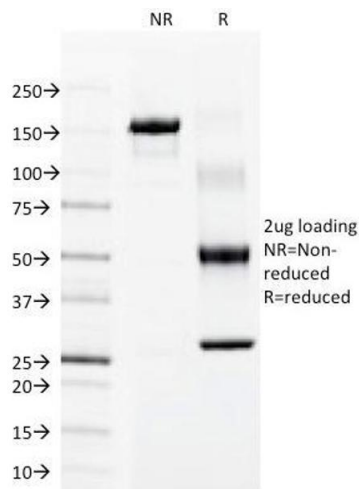
Preservative: Sodium azide

Precaution of Use: This product contains Sodium azide: a POISONOUS AND HAZARDOUS SUBSTANCE which should be handled by trained staff only.

Storage: 4 °C,-80 °C

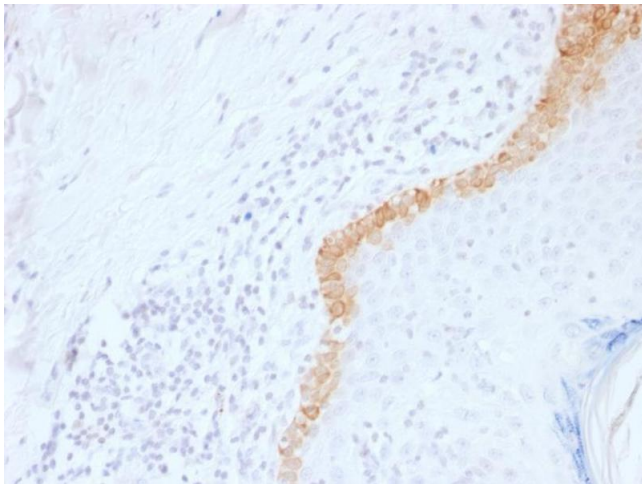
Storage Comment: Antibody with azide - store at 2 to 8°C. Antibody without azide - store at -20 to -80°C. Antibody is stable for 24 months. Non-hazardous. No MSDS required.

Expiry Date: 24 months



SDS-PAGE

Image 1. SDS-PAGE Analysis Purified Cytokeratin 15 Mouse Monoclonal Antibody (LHK15). Confirmation of Integrity and Purity of Antibody



Immunohistochemistry

Image 2. Formalin-fixed, paraffin-embedded human Skin stained with Cytokeratin 15 Mouse Monoclonal Antibody (LHK15).