



[Go to Product page](#)

Datasheet for ABIN6939916

Recombinant anti-KRT15 antibody

4 Images

Overview

Quantity:	100 µg
Target:	KRT15
Reactivity:	Human, Rat, Cow
Host:	Rabbit
Antibody Type:	Recombinant Antibody
Clonality:	Monoclonal
Conjugate:	This KRT15 antibody is un-conjugated
Application:	Immunohistochemistry (IHC), Flow Cytometry (FACS), Staining Methods (StM)

Product Details

Immunogen:	Recombinant human full-length KRT15 protein
Clone:	KRT15-2103R
Isotype:	IgG

Target Details

Target:	KRT15
Alternative Name:	KRT15 (KRT15 Products)
Background:	Keratin 15 is a type I keratin which is expressed only in basal keratinocytes in stratified epithelia and does not appear to have a natural type II expression partner. KRT15 is downregulated in activated keratinocytes. It is a specific marker of stem cells of the hair-follicle bulge and may be a useful marker for diagnosis between basal cell carcinoma (BCC) and trichoepithelioma.

Target Details

Trichoblastoma are benign neoplasms of follicular differentiation frequently found in nevus sebaceous. Many morphologic features are shared with nodular basal cell carcinoma, sometimes rendering a diagnosis difficult. Trichoblastoma and BCC show variable expression of Cytokeratin 15 and Cytokeratin 19, and absence of hair keratins.

Molecular Weight: 52kDa

Gene ID: 3866

UniProt: [P19012](#)

Application Details

Application Notes: Positive Control: HeLa, A431 cells. Skin or Colon.
Known Application: Flow Cytometry (1-2 µg/million cells), Immunohistochemistry (Formalin-fixed) (0.5-1.0 µg/mL for 30 min at RT)(Staining of formalin-fixed tissues requires boiling tissue sections in 10 mM Citrate Buffer, pH 6.0, for 10-20 min followed by cooling at RT for 20 minutes)Optimal dilution for a specific application should be determined.

Restrictions: For Research Use only

Handling

Concentration: 200 µg/mL

Buffer: 10 mM PBS with 0.05 % BSA & 0.05 % azide.

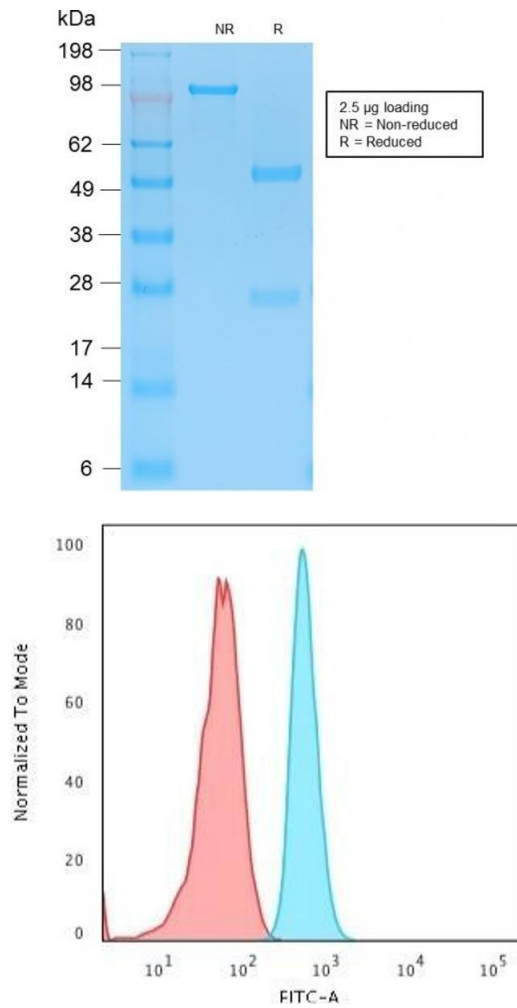
Preservative: Sodium azide

Precaution of Use: This product contains Sodium azide: a POISONOUS AND HAZARDOUS SUBSTANCE which should be handled by trained staff only.

Storage: 4 °C,-80 °C

Storage Comment: Antibody with azide - store at 2 to 8°C. Antibody without azide - store at -20 to -80°C. Antibody is stable for 24 months. Non-hazardous. No MSDS required.

Expiry Date: 24 months

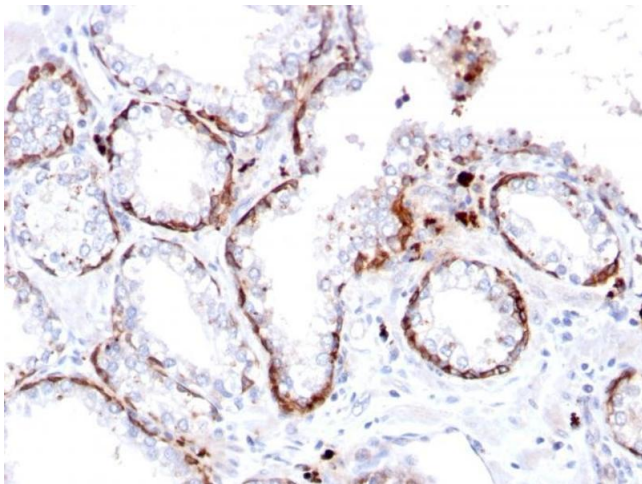


SDS-PAGE

Image 1. SDS-PAGE Analysis Purified Cytokeratin 15 Rabbit Recombinant Monoclonal Ab (KRT15/2103R). Confirmation of Purity and Integrity of Antibody.

Flow Cytometry

Image 2. Flow Cytometric Analysis of HeLa cells using KRT15 Rabbit Recombinant Monoclonal Ab (KRT15/2103R) followed by Goat anti-rabbit IgG-CF488 (Blue); Isotype Control (Red).



Immunohistochemistry

Image 3. Formalin-fixed, paraffin-embedded human Prostate stained with Cytokeratin 15 Rabbit Recombinant Monoclonal Ab (KRT15/2103R).

Please check the [product details page](#) for more images. Overall 4 images are available for ABIN6939916.