

Datasheet for ABIN6939953
anti-L1CAM antibody



[Go to Product page](#)

1 Image

Overview

Quantity:	100 µg
Target:	L1CAM
Reactivity:	Human
Host:	Mouse
Clonality:	Monoclonal
Conjugate:	This L1CAM antibody is un-conjugated
Application:	Flow Cytometry (FACS), Immunofluorescence (IF), Immunohistochemistry (Frozen Sections) (IHC (fro))

Product Details

Immunogen:	Homogenous suspension of 16-week human fetal brain
Clone:	SPM275
Isotype:	IgG1 kappa
Specificity:	Recognizes a cell surface protein of 220-240 kDa, identified as L1 cell adhesion molecule. The L1CAM gene, which is located in Xq28, is involved in three distinct conditions: 1) HSAS (hydrocephalus-stenosis of the aqueduct of Sylvius), 2) MASA (mental retardation, aphasia, shuffling gait, and adducted thumbs), and 3) SPG1 (spastic paraplegia). The L1, neural cell adhesion molecule (L1CAM) also plays an important role in axon growth, fasciculation, and neural migration as well as in mediating neuronal differentiation. Expression of L1 protein is restricted to tissues arising from neuroectoderm. This MAb is useful in the identification of primitive neuroectodermal tumors. It binds to tumors of neuroectodermal and glial origin e.g. neuroblastoma and Schwannomas. It does not bind to pediatric or adult brain.

Product Details

Purification: Purified by Protein A/G

Target Details

Target: L1CAM

Alternative Name: L1CAM ([L1CAM Products](#))

Molecular Weight: 220-240kDa

Gene ID: 3897

UniProt: [P32004](#)

Pathways: [Synaptic Membrane](#)

Application Details

Application Notes: Positive Control: Neuroblastomas or Schwannomas.
Known Application: Flow Cytometry (1-2 µg/million cells), Immunofluorescence (1-2 µg/mL), Immunohistochemistry (Frozen) (1-2 µg/mL for 30 min at RT) Optimal dilution for a specific application should be determined.

Restrictions: For Research Use only

Handling

Concentration: 200 µg/mL

Buffer: 10 mM PBS with 0.05 % BSA & 0.05 % azide.

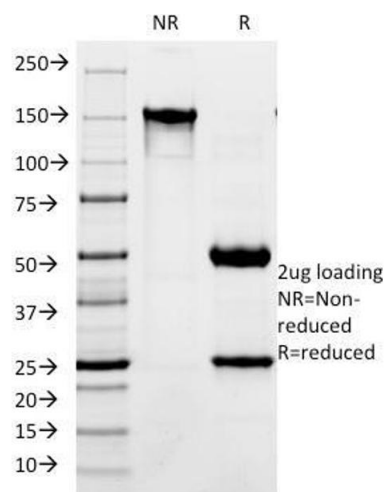
Preservative: Sodium azide

Precaution of Use: This product contains Sodium azide: a POISONOUS AND HAZARDOUS SUBSTANCE which should be handled by trained staff only.

Storage: 4 °C, -80 °C

Storage Comment: Antibody with azide - store at 2 to 8°C. Antibody without azide - store at -20 to -80°C. Antibody is stable for 24 months. Non-hazardous. No MSDS required.

Expiry Date: 24 months



SDS-PAGE

Image 1. SDS-PAGE Analysis Purified CD171 Mouse Monoclonal Antibody (SPM275). Confirmation of Integrity and Purity of Antibody.