

Datasheet for ABIN6939957

anti-RPSA/Laminin Receptor antibody

10 Images

[Go to Product page](#)

Overview

Quantity:	100 µg
Target:	RPSA/Laminin Receptor (RPSA)
Reactivity:	Human
Host:	Mouse
Clonality:	Monoclonal
Conjugate:	This RPSA/Laminin Receptor antibody is un-conjugated
Application:	Western Blotting (WB), Immunohistochemistry (IHC), Immunofluorescence (IF), Flow Cytometry (FACS), Staining Methods (StM)

Product Details

Immunogen:	Recombinant full-length human RPSA protein
Clone:	RPSA-2699
Isotype:	IgG1 kappa
Purification:	Purified by Protein A/G

Target Details

Target:	RPSA/Laminin Receptor (RPSA)
Alternative Name:	RPSA (RPSA Products)
Background:	Laminins, a family of extracellular matrix glycoproteins, are the major non-collagenous constituent of basement membranes. They have been implicated in a wide variety of biological processes including cell adhesion, differentiation, migration, signaling, neurite outgrowth and

Target Details

metastasis. Many of the effects of laminin are mediated through interactions with cell surface receptors. These receptors include members of the integrin family, as well as non-integrin laminin-binding proteins. This gene encodes a high-affinity, non-integrin family, laminin receptor 1. Reportedly, level of laminin receptor transcript is higher in colon carcinoma tissue and lung cancer cell line than their normal counterparts. Also, there is a correlation between the upregulation of this polypeptide in cancer cells and their invasive and metastatic phenotype.

Molecular Weight: 37-67kDa

Gene ID: 3921

UniProt: [P08865](#)

Pathways: [Ribonucleoprotein Complex Subunit Organization](#), [Ribosome Assembly](#)

Application Details

Application Notes: Positive Control: MCF-7, MDA-MB-453, SK-BR3, THP1, HL60, HeLa or HEK293 cells. Breast, Colon or Ovarian Carcinoma, Tonsil.

Known Application: Flow Cytometry (1-2 µg/mL), Immunofluorescence (1-2 µg/mL), Western Blot (1-2 µg/mL), Immunohistochemistry (Formalin-fixed) (1-2 µg/mL for 30 minutes at RT) (Staining of formalin-fixed tissues requires boiling tissue sections in 10 mM citrate buffer, pH 6.0, for 10-20 min followed by cooling at RT for 20 minutes) Optimal dilution for a specific application should be determined.

Restrictions: For Research Use only

Handling

Concentration: 200 µg/mL

Buffer: 10 mM PBS with 0.05 % BSA & 0.05 % azide.

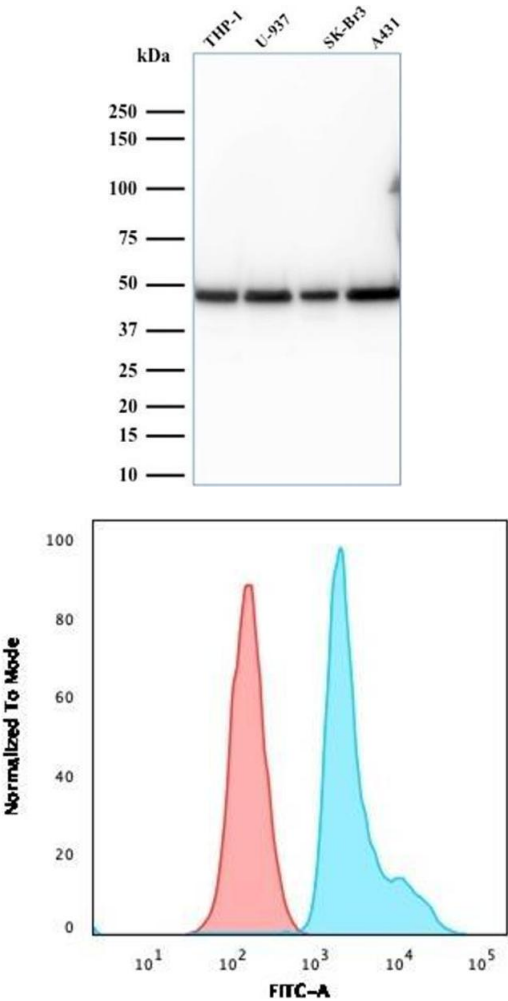
Preservative: Sodium azide

Precaution of Use: This product contains Sodium azide: a POISONOUS AND HAZARDOUS SUBSTANCE which should be handled by trained staff only.

Storage: 4 °C, -80 °C

Storage Comment: Antibody with azide - store at 2 to 8°C. Antibody without azide - store at -20 to -80°C. Antibody is stable for 24 months. Non-hazardous. No MSDS required.

Expiry Date: 24 months

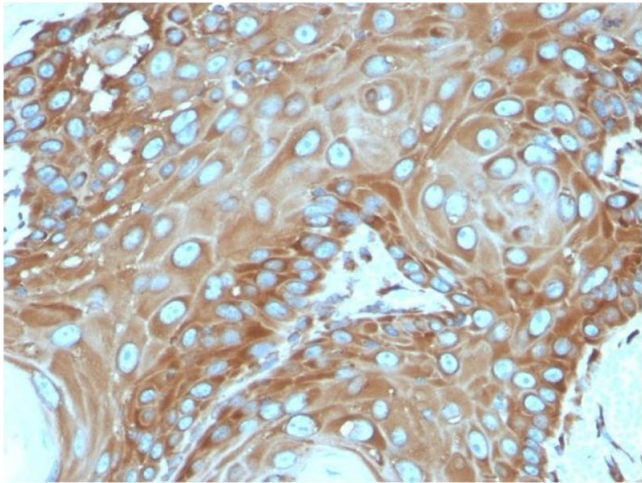


Western Blotting

Image 1. Western Blot Analysis of human THP-1, U937, SK-BR3, and A431 cell lysates. Laminin Receptor Monospecific Mouse Monoclonal Antibody (RPSA/2699).

Flow Cytometry

Image 2. Flow Cytometric Analysis of paraformaldehyde-fixed Raji cells. Laminin Receptor Monospecific Mouse Monoclonal Antibody (RPSA/2699) followed by goat anti-Mouse IgG-CF488 (blue) and Isotype Control (Red).



Immunohistochemistry

Image 3. Formalin-fixed, paraffin-embedded human Basal Cell Carcinoma stained with Laminin Receptor Monospecific Mouse Monoclonal Antibody (RPSA/2699).

Please check the [product details page](#) for more images. Overall 10 images are available for ABIN6939957.