

Datasheet for ABIN6939966  
**anti-LMO2 antibody (AA 23-140)**

## 5 Images

[Go to Product page](#)

## Overview

Quantity:	100 µg
Target:	LMO2
Binding Specificity:	AA 23-140
Reactivity:	Human
Host:	Mouse
Clonality:	Monoclonal
Conjugate:	This LMO2 antibody is un-conjugated
Application:	Western Blotting (WB), Immunohistochemistry (IHC), Flow Cytometry (FACS), Staining Methods (StM)

## Product Details

Immunogen:	Recombinant human LMO2 protein fragment (around aa 23-140) (exact sequence is proprietary)
Clone:	LMO2-1971
Isotype:	IgG2b kappa
Purification:	Purified by Protein A/G

## Target Details

Target:	LMO2
Alternative Name:	LMO2 ( <a href="#">LMO2 Products</a> )

## Target Details

Background:	The LMO2 protein has a central and crucial role in hematopoietic development and is highly conserved. It has a particular function in normal and lymphatic endothelial cells involving the regulation of angiogenesis and lymph-angiogenesis. Immunohistochemical studies have also demonstrated expression of LMO2 in both normal germinal center B-cells and germinal center-derived B-cell lymphomas, including follicular lymphoma and diffuse large B-cell lymphoma. The use of anti-LMO2 is valuable as a tool in the identification of lymphomas of B-cell origin. LMO2 is useful in differentiating follicular lymphoma (LMO2+) from nodal marginal zone lymphoma (LMO2-). It also is positive in Hodgkin s and Burkitt s lymphomas.
Molecular Weight:	24kDa
Gene ID:	4005
UniProt:	<a href="#">P25791</a>
Pathways:	<a href="#">Chromatin Binding</a>

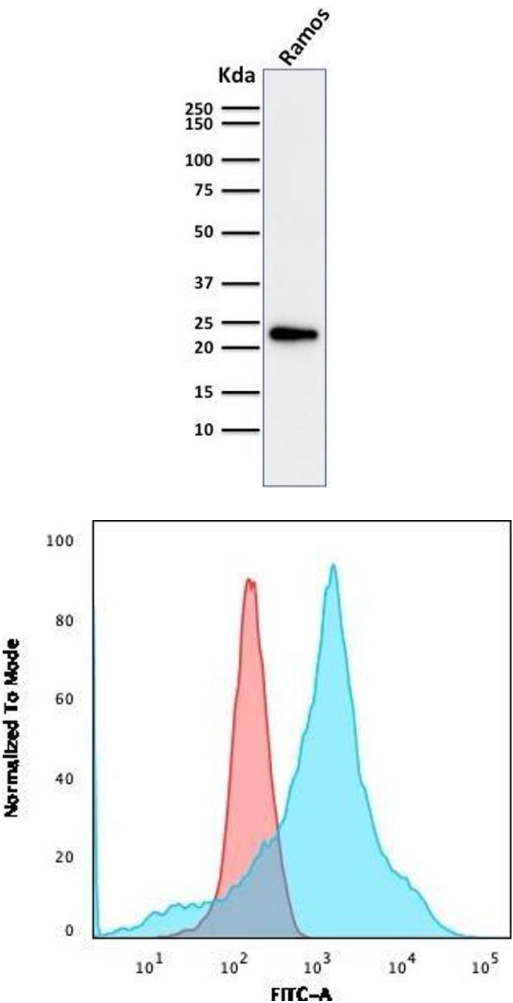
## Application Details

Application Notes:	Positive Control: K562, Ramos or Raji cells. Placenta, pancreas or Hodgkin s lymphoma. Known Application: Flow Cytometry (1-2 µg/million cells), Western Blot (1-2 µg/mL), Immunohistochemistry (Formalin-fixed) (1-2 µg/mL for 30 min at RT), (Staining of formalin-fixed tissues requires boiling tissue sections in 10 mM citrate buffer, pH 6.0, for 10-20 min followed by cooling at RT for 20 minutes), Optimal dilution for a specific application should be determined.
Restrictions:	For Research Use only

## Handling

Concentration:	200 µg/mL
Buffer:	10mM PBS with 0.05% BSA & 0.05% azide.
Preservative:	Sodium azide
Precaution of Use:	This product contains Sodium azide: a POISONOUS AND HAZARDOUS SUBSTANCE which should be handled by trained staff only.
Storage:	4 °C, -80 °C
Storage Comment:	Antibody with azide - store at 2 to 8°C. Antibody without azide - store at -20 to -80°C. Antibody is stable for 24 months. Non-hazardous. No MSDS required.

Expiry Date: 24 months

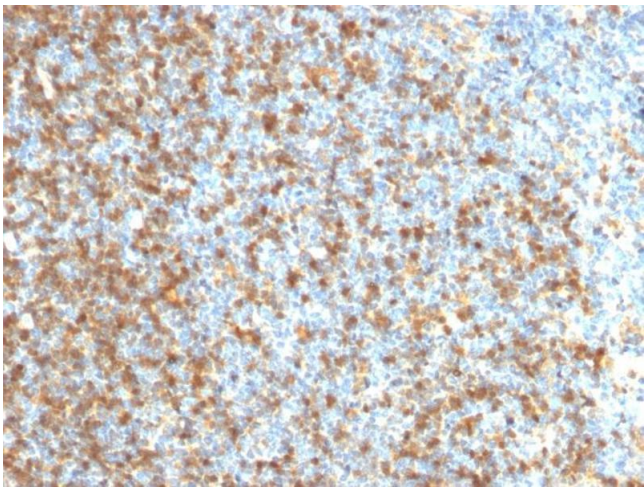


Western Blotting

**Image 1.** Western Blot Analysis of Ramos cell lysate using LMO2 Mouse Monoclonal Antibody (LMO2/1971).

Flow Cytometry

**Image 2.** Flow Cytometric Analysis of K562 cells using LMO2 Mouse Monoclonal Antibody (LMO2/1971) followed by goat anti-Mouse IgG-CF488 (Blue); Isotype Control (Red)



Immunohistochemistry

**Image 3.** Formalin-fixed, paraffin-embedded human Follicular Lymphoma stained with LMO2 Mouse Monoclonal Antibody (LMO2/1971).

Please check the [product details page](#) for more images. Overall 5 images are available for ABIN6939966.