

Datasheet for ABIN6939969
anti-LSP1 antibody (AA 174-278)

4 Images

[Go to Product page](#)

Overview

Quantity:	100 µg
Target:	LSP1
Binding Specificity:	AA 174-278
Reactivity:	Human
Host:	Mouse
Clonality:	Monoclonal
Conjugate:	This LSP1 antibody is un-conjugated
Application:	Immunohistochemistry (IHC), Immunohistochemistry (Paraffin-embedded Sections) (IHC (p)), Staining Methods (StM)

Product Details

Immunogen:	Recombinant fragment of human LSP1 protein (around aa174-278) (exact sequence is proprietary)
Clone:	LSP1-3025
Isotype:	IgG1 kappa
Purification:	Purified by Protein A/G

Target Details

Target:	LSP1
Alternative Name:	LSP1 (LSP1 Products)

Target Details

Background: LSP1 is a hematopoietic-expressed gene that encodes an F-actin-binding, leukocyte-specific (including B and T lymphocytes, granulocytes and macrophages), phosphoprotein. However, mRNA splice variants that do not encode the lympho-specific protein are expressed from this gene in nonlymphoid cell lines as well (myocytes, stromal cells and fibroblasts), suggesting pp52 has a divergent role in signal transduction. The pp52 (LSP1) locus maps to human chromosome 11p15.5, which is implicated in tumor-related chromosomal translocations found in chronic lymphocytic leukemia. The pp52 promoter contains key elements that control transcriptional activity including an initiator specifying the unique 5' terminus of pp52 mRNA, tandem pairs of Ets and SP1 motifs, and a single C/EBP motif. LSP1 binds the cytoskeleton and has been implicated in affecting cytoskeletal remodeling in a variety of leukocyte functions, including cell motility and chemotaxis.

Molecular Weight: 52kDa

Gene ID: 4046

UniProt: [P33241](#)

Application Details

Application Notes: Positive Control: Human tonsil, colon, spleen or Hodgkin's lymphoma (IHC-P).
Known Application: Immunohistochemistry (Formalin-fixed) (1-2 µg/mL for 30 minutes at RT)(Staining of formalin-fixed tissues requires boiling tissue sections in 10 mM Tris with 1 mM EDTA, pH 9.0, for 10-20 min followed by cooling at RT for 20 minutes)Optimal dilution for a specific application should be determined.

Restrictions: For Research Use only

Handling

Concentration: 200 µg/mL

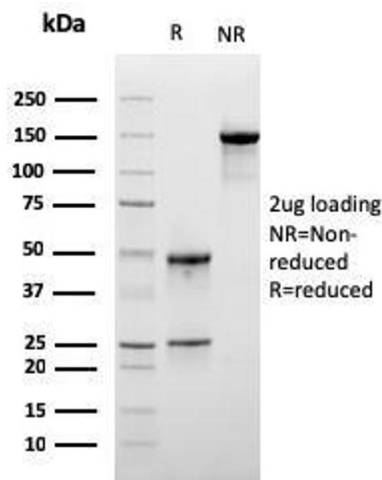
Buffer: 10 mM PBS with 0.05 % BSA & 0.05 % azide.

Preservative: Sodium azide

Precaution of Use: This product contains Sodium azide: a POISONOUS AND HAZARDOUS SUBSTANCE which should be handled by trained staff only.

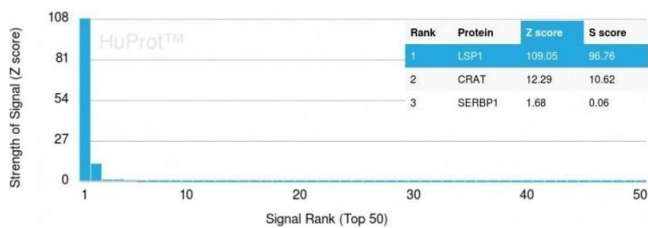
Storage: 4 °C,-80 °C

Storage Comment: Antibody with azide - store at 2 to 8°C. Antibody without azide - store at -20 to -80°C. Antibody is stable for 24 months. Non-hazardous. No MSDS required.



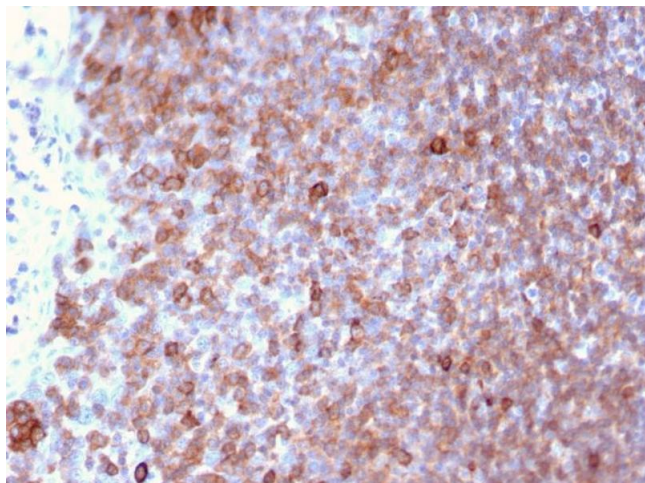
SDS-PAGE

Image 1. SDS-PAGE Analysis Purified Monospecific Mouse Monoclonal Antibody to LSP1 (LSP1/3025). Confirmation of Purity and Integrity of Antibody.



Protein Array

Image 2. Analysis of Protein Array containing more than 19,000 full-length human proteins using LSP1 Mouse Monoclonal Antibody (LSP1/3025). Z- and S- Score: The Z-score represents the strength of a signal that a monoclonal antibody (MAb) (in combination with a fluorescently-tagged anti-IgG secondary antibody) produces when binding to a particular protein on the HuProt™ array. Z-scores are described in units of standard deviations (SD's) above the mean value of all signals generated on that array. If targets on HuProt™ are arranged in descending order of the Z-score, the S-score is the difference (also in units of SD's) between the Z-score. S-score therefore represents the relative target specificity of a MAb to its intended target. A MAb is considered to specific to its intended target, if the MAb has an S-score of at least 2.5. For example, if a MAb binds to protein X with a Z-score of 43 and to protein Y with a Z-score of 14, then the S-score for the binding of that MAb to protein X is equal to 29.



Immunohistochemistry

Image 3. Formalin-fixed, paraffin-embedded human Lymph Node stained with Monospecific Mouse Monoclonal Antibody to LSP1 (LSP1/3025).

Please check the [product details page](#) for more images. Overall 4 images are available for ABIN6939969.