

Datasheet for ABIN6939979

anti-EpCAM antibody (Extracellular Domain)**6** Images[Go to Product page](#)

Overview

Quantity:	100 µg
Target:	EpCAM (EPCAM)
Binding Specificity:	AA 77-202, Extracellular Domain
Reactivity:	Human
Host:	Mouse
Clonality:	Monoclonal
Conjugate:	This EpCAM antibody is un-conjugated
Application:	Flow Cytometry (FACS), Immunofluorescence (IF), Immunohistochemistry (IHC), ELISA, Coating (Coat), Staining Methods (StM)

Product Details

Immunogen:	Recombinant human EpCAM protein fragment from extracellular domain (around aa77-202) (exact sequence is proprietary)
Clone:	EGP40-1384
Isotype:	IgG
Purification:	Purified by Protein A/G

Target Details

Target:	EpCAM (EPCAM)
Alternative Name:	TACSTD1 (EPCAM Products)

Target Details

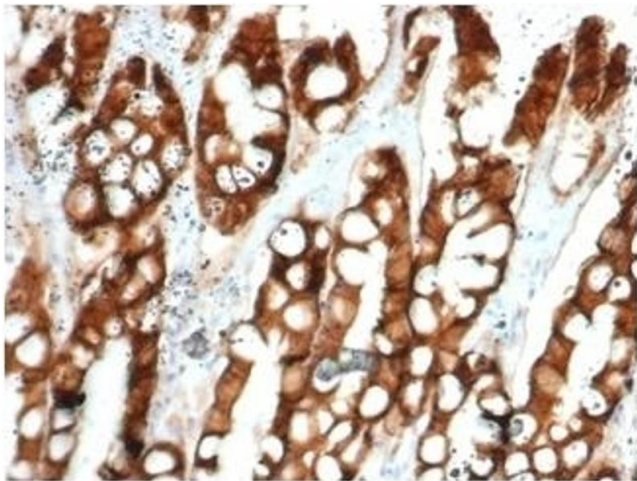
Background:	EGP40 is a 40-43 kDa transmembrane epithelial glycoprotein, also identified as epithelial specific antigen (ESA), or epithelial cellular adhesion molecule (Ep-CAM). It is expressed on baso-lateral cell surface in most simple epithelia and a vast majority of carcinomas. This antibody has been used to distinguish adenocarcinoma from pleural mesothelioma and hepatocellular carcinoma. This antibody is also useful in distinguishing serous carcinomas of the ovary from mesothelioma.
Molecular Weight:	40-43kDa
Gene ID:	4072
UniProt:	P16422

Application Details

Application Notes:	Positive Control: MCF-7 or HT29 cells. Human lung or ovarian carcinoma (IHC). Known Application: ELISA (For coating, order antibody without BSA), Flow Cytometry (0.5-1 µg/million cells), ,Immunofluorescence (1-2 µg/mL), ,Immunohistochemistry (Formalin-fixed) (0.5-1 µg/mL for 30 min at RT),(Staining of formalin-fixed tissues requires boiling tissue sections in 10 mM Citrate Buffer, pH 6.0, for 10-20 min followed by cooling at RT for 20 minutes),Optimal dilution for a specific application should be determined.
Restrictions:	For Research Use only

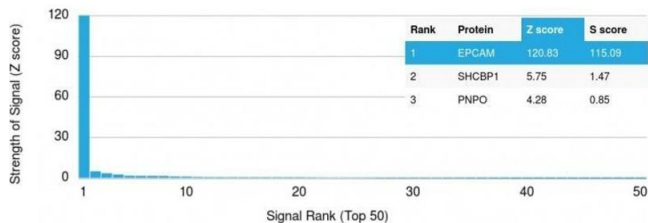
Handling

Concentration:	200 µg/mL
Buffer:	10 mM PBS with 0.05 % BSA & 0.05 % azide.
Preservative:	Sodium azide
Precaution of Use:	This product contains Sodium azide: a POISONOUS AND HAZARDOUS SUBSTANCE which should be handled by trained staff only.
Storage:	4 °C,-80 °C
Storage Comment:	Antibody with azide - store at 2 to 8°C. Antibody without azide - store at -20 to -80°C. Antibody is stable for 24 months. Non-hazardous. No MSDS required.
Expiry Date:	24 months



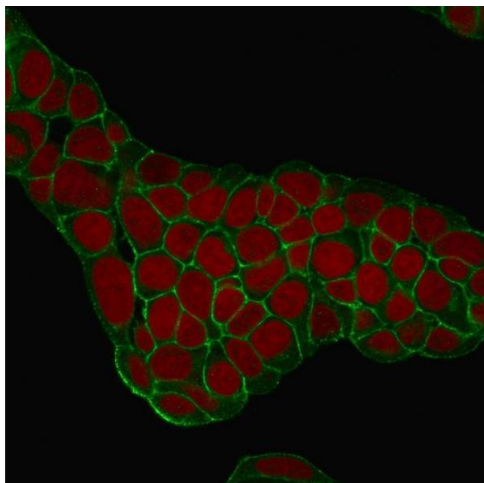
Immunohistochemistry

Image 1. Formalin-fixed, paraffin-embedded feline (cat) small intestine stained with Ep-CAM Mouse Monoclonal Antibody (EGP40/1384).



Protein Array

Image 2. Analysis of Protein Array containing >19,000 full-length human proteins using EpCAM Mouse Monoclonal Antibody (EGP40/1384) Z- and S- Score: The Z-score represents the strength of a signal that a monoclonal antibody (MAb) (in combination with a fluorescently-tagged anti-IgG secondary antibody) produces when binding to a particular protein on the HuProt™ array. Z-scores are described in units of standard deviations (SDs) above the mean value of all signals generated on that array. If targets on HuProt™ are arranged in descending order of the Z-score, the S-score is the difference (also in units of SDs) between the Z-score. S-score therefore represents the relative target specificity of a MAb to its intended target. A MAb is considered to specific to its intended target, if the MAb has an S-score of at least 2.5. For example, if a MAb binds to protein X with a Z-score of 43 and to protein Y with a Z-score of 14, then the S-score for the binding of that MAb to protein X is equal to 29.



Immunofluorescence

Image 3. Confocal Immunofluorescence of MCF-7 cells EpCAM Mouse Monoclonal Antibody (EGP40/1384). labeled with CF488 (Green); Reddot is used to label the nuclei.

Please check the [product details page](#) for more images. Overall 6 images are available for ABIN6939979.