

Datasheet for ABIN6939980  
**anti-EpCAM antibody (Extracellular Domain)**



[Go to Product page](#)

5 Images

## Overview

Quantity:	100 µg
Target:	EpCAM (EPCAM)
Binding Specificity:	AA 77-202, Extracellular Domain
Reactivity:	Human
Host:	Mouse
Clonality:	Monoclonal
Conjugate:	This EpCAM antibody is un-conjugated
Application:	Flow Cytometry (FACS), Immunofluorescence (IF), Immunohistochemistry (IHC), ELISA, Staining Methods (StM), Coating (Coat)

## Product Details

Immunogen:	Recombinant human EpCAM protein fragment from extracellular domain (around aa77-202) (exact sequence is proprietary)
Clone:	EGP40-1798
Isotype:	IgG2b kappa
Purification:	Purified by Protein A/G

## Target Details

Target:	EpCAM (EPCAM)
Alternative Name:	TACSTD1 ( <a href="#">EPCAM Products</a> )

## Target Details

---

**Background:** EGP40 is a 40-43 kDa transmembrane epithelial glycoprotein, also identified as epithelial specific antigen (ESA), or epithelial cellular adhesion molecule (Ep-CAM). It is expressed on baso-lateral cell surface in most simple epithelia and a vast majority of carcinomas. This antibody has been used to distinguish adenocarcinoma from pleural mesothelioma and hepatocellular carcinoma. This antibody is also useful in distinguishing serous carcinomas of the ovary from mesothelioma.

**Molecular Weight:** 40-43kDa

**Gene ID:** 4072

**UniProt:** [P16422](#)

## Application Details

---

**Application Notes:** Positive Control: MCF-7, HT29 cells, Lung or Ovarian carcinoma.  
Known Application: ELISA (Use Ab at 2-4 µg/mL for coating) (Order Ab without BSA), Flow Cytometry (0.5-1 µg/million cells), Immunofluorescence (1-2 µg/mL), Immunofluorescence (1-2 µg/mL), Immunohistochemistry (Formalin-fixed) (0.5-1 µg/mL for 30 min at RT)(Staining of formalin-fixed tissues requires boiling tissue sections in 10 mM Citrate Buffer, pH 6.0, for 10-20 min followed by cooling at RT for 20 minutes)Optimal dilution for a specific application should be determined.

**Restrictions:** For Research Use only

## Handling

---

**Concentration:** 200 µg/mL

**Buffer:** 10 mM PBS with 0.05 % BSA & 0.05 % azide.

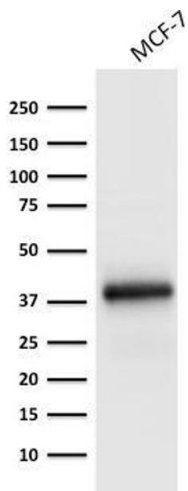
**Preservative:** Sodium azide

**Precaution of Use:** This product contains Sodium azide: a POISONOUS AND HAZARDOUS SUBSTANCE which should be handled by trained staff only.

**Storage:** 4 °C,-80 °C

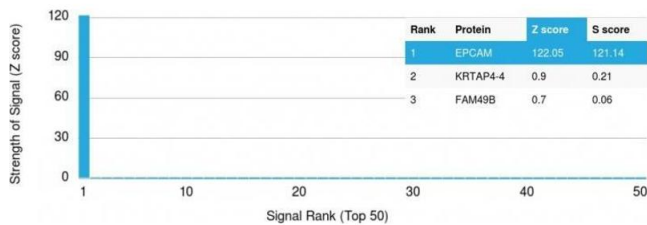
**Storage Comment:** Antibody with azide - store at 2 to 8°C. Antibody without azide - store at -20 to -80°C. Antibody is stable for 24 months. Non-hazardous. No MSDS required.

**Expiry Date:** 24 months



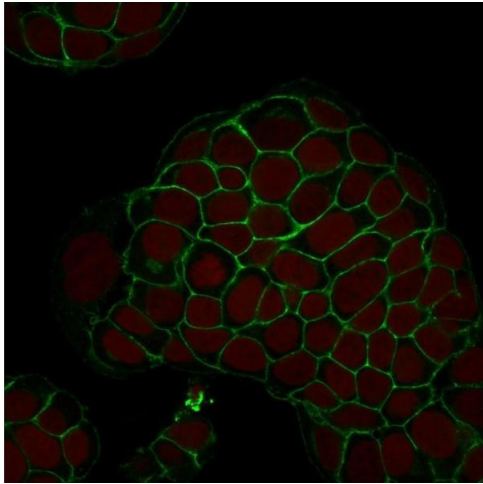
### Western Blotting

**Image 1.** Western Blot Analysis of MCF-7 cell lysate using Ep-CAM Monoclonal Antibody (EGP40/1798).



### Protein Array

**Image 2.** Analysis of Protein Array containing >19,000 full-length human proteins using EpCAM Mouse Monoclonal Antibody (EGP40/1798) Z- and S- Score: The Z-score represents the strength of a signal that a monoclonal antibody (MAb) (in combination with a fluorescently-tagged anti-IgG secondary antibody) produces when binding to a particular protein on the HuProt™ array. Z-scores are described in units of standard deviations (SD's) above the mean value of all signals generated on that array. If targets on HuProt™ are arranged in descending order of the Z-score, the S-score is the difference (also in units of SD's) between the Z-score. S-score therefore represents the relative target specificity of a MAb to its intended target. A MAb is considered to specific to its intended target, if the MAb has an S-score of at least 2.5. For example, if a MAb binds to protein X with a Z-score of 43 and to protein Y with a Z-score of 14, then the S-score for the binding of that MAb to protein X is equal to 29.



### Immunofluorescence

**Image 3.** Confocal Immunofluorescence of MCF-7 cells Ep-CAM Monoclonal Antibody (EGP40/1798) labeled with CF488 (Green); Reddot is used to label the nuclei.

Please check the [product details page](#) for more images. Overall 5 images are available for ABIN6939980.