

Datasheet for ABIN6939981

Recombinant anti-EpCAM antibody**5** Images[Go to Product page](#)

Overview

Quantity:	100 µg
Target:	EpCAM (EPCAM)
Reactivity:	Human
Host:	Mouse
Antibody Type:	Recombinant Antibody
Clonality:	Monoclonal
Conjugate:	This EpCAM antibody is un-conjugated
Application:	Immunohistochemistry (IHC), Staining Methods (StM)

Product Details

Immunogen:	Recombinant full-length human EpCAM protein
Clone:	RMOC-31
Isotype:	IgG1 kappa
Specificity:	Binding epitope of this antibody is located in the first EGF-like repeat domain (EGF1) between amino acids 27-59 of EpCAM. EGP40 is a 40-43 kDa transmembrane epithelial glycoprotein, also identified as epithelial specific antigen (ESA), or epithelial cellular adhesion molecule (EpCAM). It is expressed on baso-lateral cell surface in most simple epithelia and a vast majority of carcinomas with the exception of adult squamous epithelium, hepatocytes and gastric epithelial cells. This antibody has been used to distinguish adenocarcinoma from pleural mesothelioma and hepatocellular carcinoma. This antibody is also useful in distinguishing serous carcinomas of the ovary from mesothelioma.

Product Details

No Cross-Reactivity:	Rat (Rattus)
Purification:	Purified by Protein A/G

Target Details

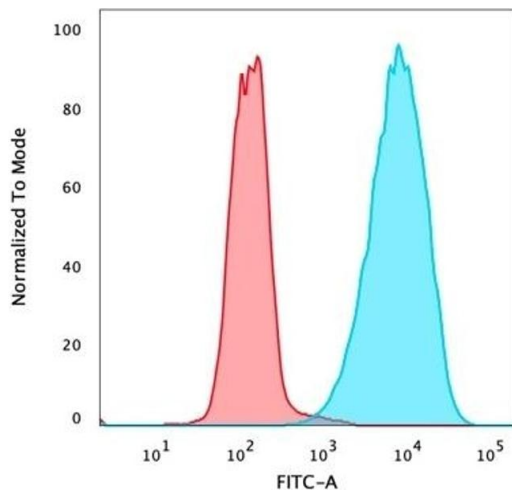
Target:	EpCAM (EPCAM)
Alternative Name:	TACSTD1 (EPCAM Products)
Molecular Weight:	40-43kDa
Gene ID:	4072
UniProt:	P16422

Application Details

Application Notes:	Positive Control: HT29 cells. Breast tumor. Known Application: Immunohistochemistry (Formalin-fixed) (0.5-1 µg/mL for 30 minutes at RT),(Staining of formalin-fixed tissues requires boiling tissue sections in 10 mM citrate buffer, pH 6.0, for 10-20 min followed by cooling at RT for 20 minutes),Optimal dilution for a specific application should be determined.
Restrictions:	For Research Use only

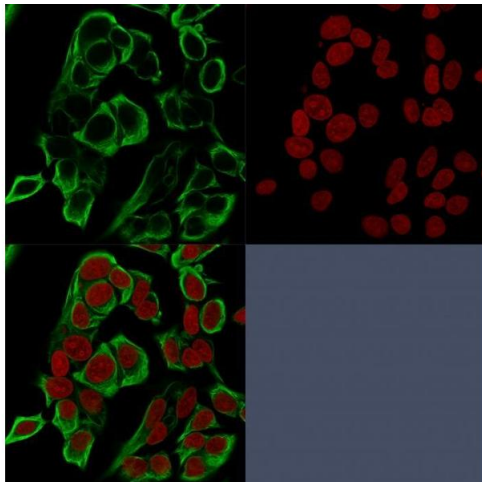
Handling

Concentration:	200 µg/mL
Buffer:	10 mM PBS with 0.05 % BSA & 0.05 % azide.
Preservative:	Sodium azide
Precaution of Use:	This product contains Sodium azide: a POISONOUS AND HAZARDOUS SUBSTANCE which should be handled by trained staff only.
Storage:	4 °C,-80 °C
Storage Comment:	Antibody with azide - store at 2 to 8°C. Antibody without azide - store at -20 to -80°C. Antibody is stable for 24 months. Non-hazardous. No MSDS required.
Expiry Date:	24 months



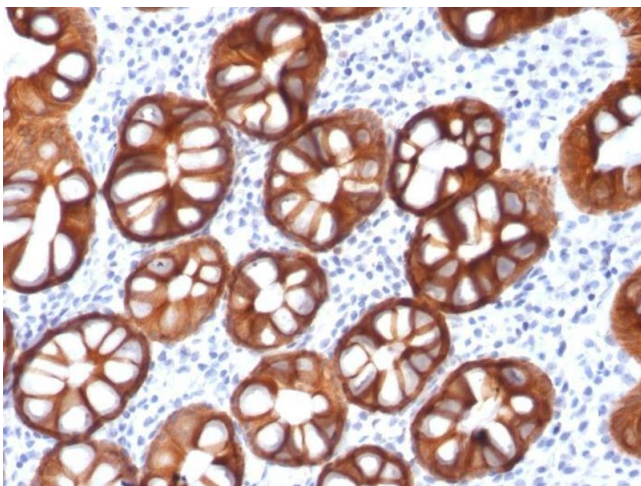
Flow Cytometry

Image 1. Flow cytometric analysis of PFA-fixed MCF-7 cells stained with EpCAM Mouse Recombinant Monoclonal Antibody (rMOC-31) followed by goat anti-mouse IgG-CF488 (blue), isotype control (red).



Immunofluorescence

Image 2. Confocal immunofluorescence analysis of MCF-7 cells using EpCAM Mouse Recombinant Monoclonal Antibody (rMOC-31) labeled in Green. Reddot is used to label the nucleus red.



Immunohistochemistry

Image 3. Formalin-fixed, paraffin-embedded human Colon Carcinoma stained with EpCAM Mouse Recombinant Monoclonal Antibody (rMOC-31).

Please check the [product details page](#) for more images. Overall 5 images are available for ABIN6939981.