

Datasheet for ABIN6939994

Recombinant anti-EpCAM antibody (N-Term)

6 Images

[Go to Product page](#)

Overview

Quantity:	100 µg
Target:	EpCAM (EPCAM)
Binding Specificity:	AA 20-60, N-Term
Reactivity:	Human
Host:	Rabbit
Antibody Type:	Recombinant Antibody
Clonality:	Monoclonal
Conjugate:	This EpCAM antibody is un-conjugated
Application:	Flow Cytometry (FACS), Immunohistochemistry (IHC), Staining Methods (StM)

Product Details

Immunogen:	A synthetic peptide (around aa 20-60) from the N-terminus of human TACSTD1 protein
Clone:	EGP40-1555R
Isotype:	IgG
Specificity:	Recognizes a 40-43 kDa transmembrane epithelial glycoprotein, identified as epithelial specific antigen (ESA), or epithelial cellular adhesion molecule (EpCAM). EpCAM is expressed on baso-lateral cell surface in most simple epithelia and a vast majority of carcinomas. This antibody has been used to distinguish adenocarcinoma from pleural mesothelioma and hepatocellular carcinoma. It is also useful in distinguishing serous carcinomas of the ovary from mesothelioma. This epithelial antigen plays an important role as a tumor-cell marker in lymph nodes from patients with esophageal carcinoma otherwise classified as node-negative.

Product Details

Epithelial antigen has also been suggested as a discriminator between basal cell and baso-squamous carcinomas, and squamous cell carcinoma of the skin.

No Cross-Reactivity: Mouse (Murine), Rat (Rattus)

Target Details

Target: EpCAM (EPCAM)

Alternative Name: TACSTD1 ([EPCAM Products](#))

Molecular Weight: 40-43kDa

Gene ID: 4072

UniProt: [P16422](#)

Application Details

Application Notes: Positive Control: MCF-7 or HT29 cells. Breast tumor.
Known Application: Flow Cytometry (1-2 µg/million cells), Immunohistochemistry (Formalin-fixed) (1-2 µg/mL for 30 min at RT)(Staining of formalin-fixed tissues requires boiling tissue sections in 10 mM Citrate Buffer, pH 6.0, for 10-20 min followed by cooling at RT for 20 minutes)Optimal dilution for a specific application should be determined.

Restrictions: For Research Use only

Handling

Concentration: 200 µg/mL

Buffer: 10 mM PBS with 0.05 % BSA & 0.05 % azide.

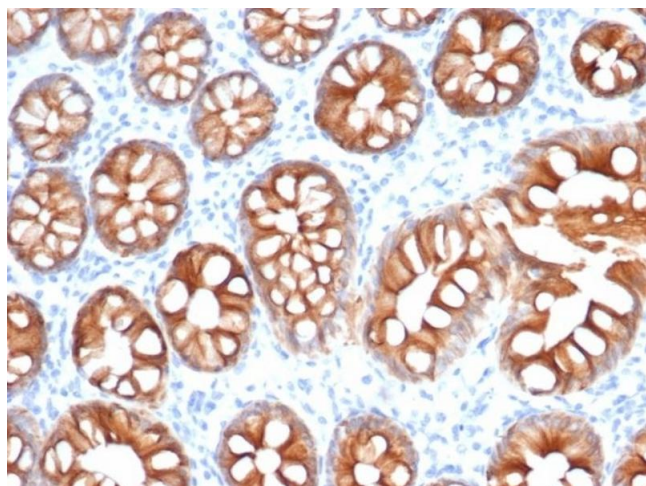
Preservative: Sodium azide

Precaution of Use: This product contains Sodium azide: a POISONOUS AND HAZARDOUS SUBSTANCE which should be handled by trained staff only.

Storage: 4 °C,-80 °C

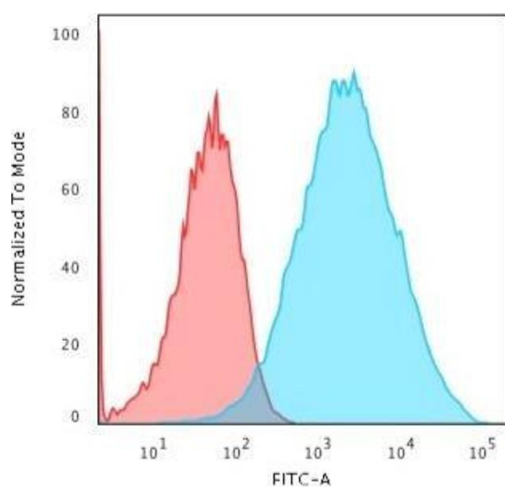
Storage Comment: Antibody with azide - store at 2 to 8°C. Antibody without azide - store at -20 to -80°C. Antibody is stable for 24 months. Non-hazardous. No MSDS required.

Expiry Date: 24 months



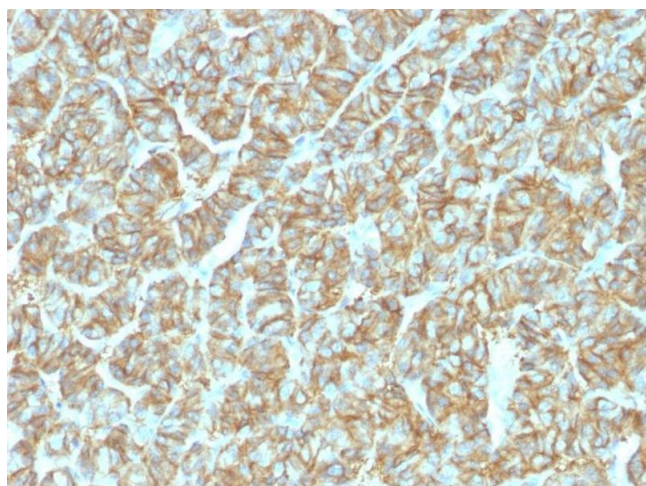
Immunohistochemistry

Image 1. Formalin-fixed, paraffin-embedded human colon carcinoma stained with EpCAM Recombinant Rabbit Monoclonal Antibody (EGP40/1555R).



Flow Cytometry

Image 2. Flow Cytometric Analysis of trypsinized-MCF-7 cells. EpCAM Rabbit Recombinant Monoclonal Antibody (EGP40/1555R) followed by goat anti-Mouse IgG-CF488 (Blue); Isotype Control (Red).



Immunohistochemistry

Image 3. Formalin-fixed, paraffin-embedded human Thyroid Carcinoma stained with EpCAM Rabbit Recombinant Monoclonal Antibody (EGP40/1555R).

Please check the [product details page](#) for more images. Overall 6 images are available for ABIN6939994.