



[Go to Product page](#)

Datasheet for ABIN6939995

Recombinant anti-EpCAM antibody

5 Images

Overview

Quantity:	100 µg
Target:	EpCAM (EPCAM)
Reactivity:	Human
Host:	Rabbit
Antibody Type:	Recombinant Antibody
Clonality:	Monoclonal
Conjugate:	This EpCAM antibody is un-conjugated
Application:	Flow Cytometry (FACS), Immunofluorescence (IF), Immunohistochemistry (IHC), Staining Methods (StM)

Product Details

Immunogen:	Recombinant human full-length TACSTD1 protein
Clone:	EGP40-1556R
Isotype:	IgG
No Cross-Reactivity:	Mouse (Murine), Rat (Rattus)

Target Details

Target:	EpCAM (EPCAM)
Alternative Name:	TACSTD1 (EPCAM Products)
Background:	EGP40 is a 40-43 kDa transmembrane epithelial glycoprotein, also identified as epithelial

Target Details

specific antigen (ESA), or epithelial cellular adhesion molecule (EpCAM). It is expressed on baso-lateral cell surface in most simple epithelia and a vast majority of carcinomas with the exception of adult squamous epithelium, hepatocytes and gastric epithelial cells. This antibody has been used to distinguish adenocarcinoma from pleural mesothelioma and hepatocellular carcinoma. This antibody is also useful in distinguishing serous carcinomas of the ovary from mesothelioma.

Molecular Weight: 40-43kDa

Gene ID: 4072

UniProt: [P16422](#)

Application Details

Application Notes: Positive Control: MCF-7 or HT29 cells. Breast tumor.
Known Application: Flow Cytometry (1-2 µg/million cells), Immunofluorescence (1-2 µg/mL), Immunohistochemistry (Formalin-fixed) (0.5-1 µg/mL for 30 min at RT)(Staining of formalin-fixed tissues requires boiling tissue sections in 10 mM Citrate Buffer, pH 6.0, for 10-20 min followed by cooling at RT for 20 minutes)Optimal dilution for a specific application should be determined.

Restrictions: For Research Use only

Handling

Concentration: 200 µg/mL

Buffer: 10 mM PBS with 0.05 % BSA & 0.05 % azide.

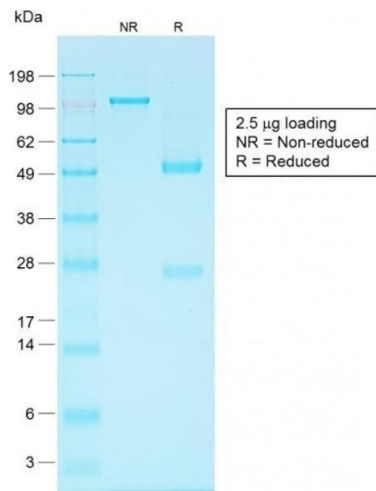
Preservative: Sodium azide

Precaution of Use: This product contains Sodium azide: a POISONOUS AND HAZARDOUS SUBSTANCE which should be handled by trained staff only.

Storage: 4 °C, -80 °C

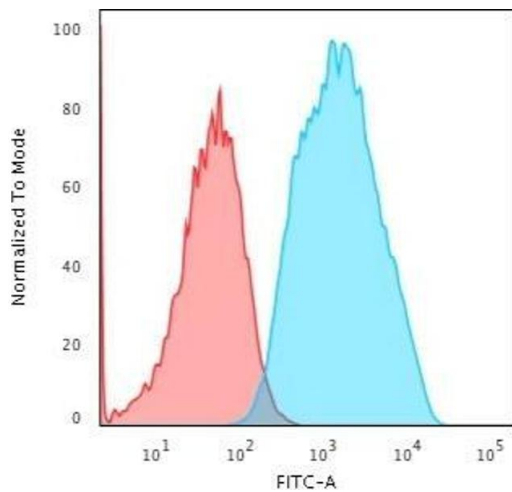
Storage Comment: Antibody with azide - store at 2 to 8°C. Antibody without azide - store at -20 to -80°C. Antibody is stable for 24 months. Non-hazardous. No MSDS required.

Expiry Date: 24 months



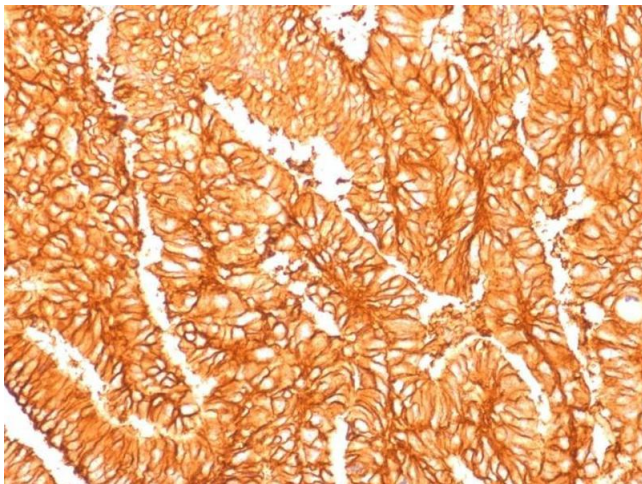
SDS-PAGE

Image 1. SDS-PAGE Analysis Purified EpCAM Rabbit Recombinant Monoclonal Antibody (EGP40/1556R). Confirmation of Purity and Integrity of Antibody.



Flow Cytometry

Image 2. Flow Cytometric Analysis of trypsinised MCF-7 cells using EpCAM Rabbit Recombinant Monoclonal Antibody (EGP40/1556R) followed by Goat anti-Rabbit IgG-CF488 (Blue); Isotype Control (Red).



Immunohistochemistry

Image 3. Formalin-fixed, paraffin-embedded human Colon Carcinoma stained with EpCAM Rabbit Recombinant Monoclonal Antibody (EGP40/1556R).

Please check the [product details page](#) for more images. Overall 5 images are available for ABIN6939995.