

Datasheet for ABIN6939996

**Recombinant anti-EpCAM antibody (Extracellular Domain)**

## 5 Images

[Go to Product page](#)

## Overview

Quantity:	100 µg
Target:	EpCAM (EPCAM)
Binding Specificity:	AA 100-224, Extracellular Domain
Reactivity:	Human
Host:	Rabbit
Antibody Type:	Recombinant Antibody
Clonality:	Monoclonal
Conjugate:	This EpCAM antibody is un-conjugated
Application:	Western Blotting (WB), Immunohistochemistry (IHC), Staining Methods (StM)

## Product Details

Immunogen:	Recombinant human EpCAM fragment from extracellular domain (around aa100-224) (exact sequence is proprietary)
Clone:	EGP40-2041R
Isotype:	IgG
Specificity:	Epitope of this MAb is mapped between aa 202-212 of EGP40, which is a 40-43 kDa transmembrane epithelial glycoprotein, also identified as epithelial specific antigen (ESA), or epithelial cellular adhesion molecule (Ep-CAM). It is expressed on baso-lateral cell surface in most simple epithelia and a vast majority of carcinomas. Antibody to Ep-CAM has been used to distinguish adenocarcinoma from pleural mesothelioma and hepatocellular carcinoma. This antibody is also useful in distinguishing serous carcinomas of the ovary from mesothelioma.

## Target Details

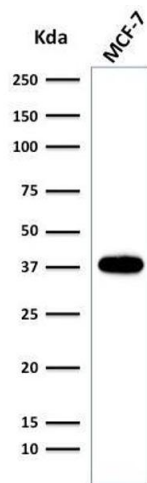
Target:	EpCAM (EPCAM)
Alternative Name:	TACSTD1 ( <a href="#">EPCAM Products</a> )
Molecular Weight:	40-43kDa
Gene ID:	4072
UniProt:	<a href="#">P16422</a>

## Application Details

Application Notes:	Positive Control: MCF-7 or HT29 cells. Breast tumor. Known Application: Western Blot (0.5-1.0 µg/mL), Immunohistochemistry (Formalin-fixed) (0.5-1 µg/mL for 30 min at RT),(Staining of formalin-fixed tissues requires boiling tissue sections in 10 mM Citrate Buffer, pH 6.0, for 10-20 min followed by cooling at RT for 20 minutes),Optimal dilution for a specific application should be determined.
Restrictions:	For Research Use only

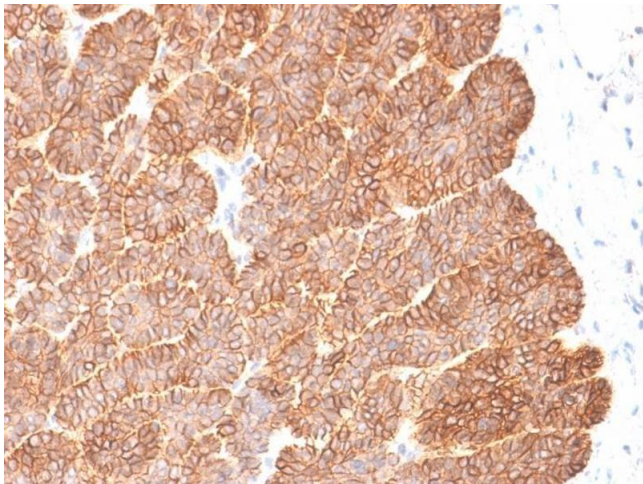
## Handling

Concentration:	200 µg/mL
Buffer:	10 mM PBS with 0.05 % BSA & 0.05 % azide.
Preservative:	Sodium azide
Precaution of Use:	This product contains Sodium azide: a POISONOUS AND HAZARDOUS SUBSTANCE which should be handled by trained staff only.
Storage:	4 °C,-80 °C
Storage Comment:	Antibody with azide - store at 2 to 8°C. Antibody without azide - store at -20 to -80°C. Antibody is stable for 24 months. Non-hazardous. No MSDS required.
Expiry Date:	24 months



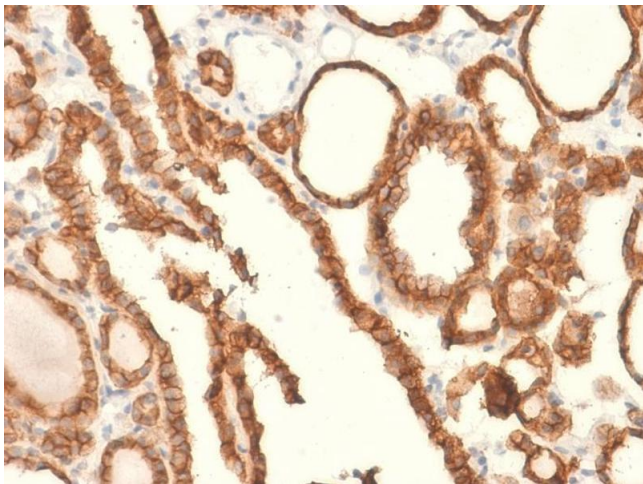
#### Western Blotting

**Image 1.** Western Blot of MCF-7 cell lysate using EpCAM Rabbit Recombinant Monoclonal Antibody (EGP40/2041R).



#### Immunohistochemistry

**Image 2.** Formalin-fixed, paraffin-embedded human Basal Cell Carcinoma stained with EpCAM Rabbit Recombinant Monoclonal Antibody (EGP40/2041R).



#### Immunohistochemistry

**Image 3.** Formalin-fixed, paraffin-embedded human Thyroid Carcinoma stained with EpCAM Rabbit Recombinant Monoclonal Antibody (EGP40/2041R).

Please check the [product details page](#) for more images. Overall 5 images are available for ABIN6939996.