

Datasheet for ABIN6939997

**Recombinant anti-EpCAM antibody (Extracellular Domain)**[Go to Product page](#)**4** Images

## Overview

Quantity:	100 µg
Target:	EpCAM (EPCAM)
Binding Specificity:	AA 100-224, Extracellular Domain
Reactivity:	Human
Host:	Rabbit
Antibody Type:	Recombinant Antibody
Clonality:	Monoclonal
Conjugate:	This EpCAM antibody is un-conjugated
Application:	Flow Cytometry (FACS), Immunohistochemistry (IHC), Staining Methods (StM)

## Product Details

Immunogen:	Recombinant human EpCAM fragment from extracellular domain (around aa100-224) (exact sequence is proprietary)
Clone:	EGP40-2571R
Isotype:	IgG
Specificity:	Epitope of this MAb is mapped between aa 202-212 of EGP40, which is a 40-43 kDa transmembrane epithelial glycoprotein, also identified as epithelial specific antigen (ESA), or epithelial cellular adhesion molecule (Ep-CAM). It is expressed on baso-lateral cell surface in most simple epithelia and a vast majority of carcinomas. Antibody to Ep-CAM has been used to distinguish adenocarcinoma from pleural mesothelioma and hepatocellular carcinoma. This antibody is also useful in distinguishing serous carcinomas of the ovary from mesothelioma.

## Target Details

---

Target: EpCAM (EPCAM)

Alternative Name: TACSTD1 ([EPCAM Products](#))

Molecular Weight: 40-43kDa

Gene ID: 4072

UniProt: [P16422](#)

## Application Details

---

Application Notes: Positive Control: MCF-7 or HT29 cells. Breast tumor.  
Known Application: Flow Cytometry (1-2 µg/million cells). Immunohistochemistry (Formalin-fixed) (0.5-1 µg/mL for 30 min at RT)(Staining of formalin-fixed tissues requires boiling tissue sections in 10 mM Citrate Buffer, pH 6.0, for 10-20 min followed by cooling at RT for 20 minutes)Optimal dilution for a specific application should be determined.

Restrictions: For Research Use only

## Handling

---

Concentration: 200 µg/mL

Buffer: 10 mM PBS with 0.05 % BSA & 0.05 % azide.

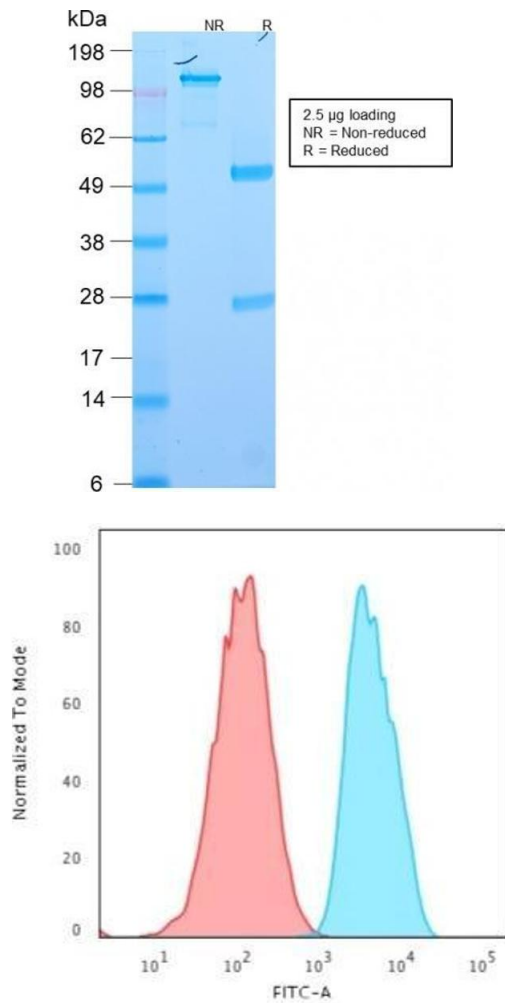
Preservative: Sodium azide

Precaution of Use: This product contains Sodium azide: a POISONOUS AND HAZARDOUS SUBSTANCE which should be handled by trained staff only.

Storage: 4 °C,-80 °C

Storage Comment: Antibody with azide - store at 2 to 8°C. Antibody without azide - store at -20 to -80°C. Antibody is stable for 24 months. Non-hazardous. No MSDS required.

Expiry Date: 24 months

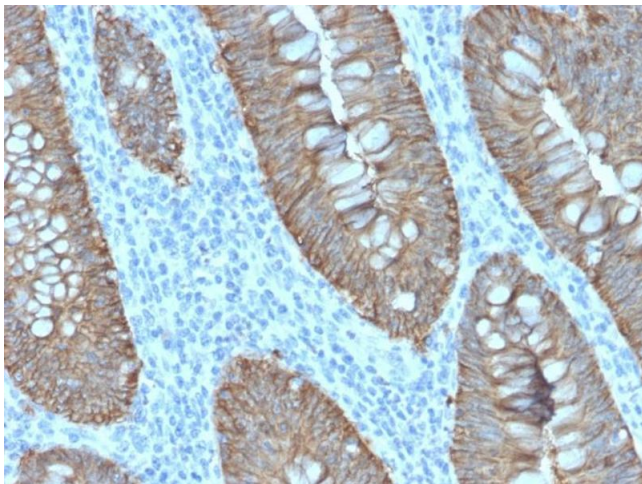


### SDS-PAGE

**Image 1.** SDS-PAGE Analysis Purified EpCAM Rabbit Recombinant Monoclonal Antibody (EGP40/2571R). Confirmation of Integrity and Purity of Antibody.

### Flow Cytometry

**Image 2.** Flow Cytometric Analysis of MCF-7 cells using EpCAM Rabbit Recombinant Monoclonal Antibody (EGP40/2571R) followed by Goat anti-Mouse IgG-CF488 (Blue); Isotype Control (Red).



### Immunohistochemistry

**Image 3.** Formalin-fixed, paraffin-embedded human Colon Carcinoma stained with EpCAM Rabbit Recombinant Monoclonal Antibody (EGP40/2571R).

Please check the [product details page](#) for more images. Overall 4 images are available for ABIN6939997.