

Datasheet for ABIN6940001

**anti-MAGEA1 antibody**[Go to Product page](#)**1** Image

## Overview

Quantity:	100 µg
Target:	MAGEA1
Reactivity:	Human, Rat, Dog
Host:	Mouse
Clonality:	Monoclonal
Conjugate:	This MAGEA1 antibody is un-conjugated
Application:	Immunofluorescence (IF), Immunohistochemistry (IHC), Flow Cytometry (FACS), Staining Methods (StM)

## Product Details

Immunogen:	Human MAGE-A1 full length recombinant protein
Clone:	SPM282
Isotype:	IgG1 kappa
Specificity:	Recognizes a protein of 42-46 kDa, identified as MAGE-1. This MAb does not cross-react with MAGE-2, -3, -4, -6 -9, -10, -or -12 protein. Human malignant neoplasms carry rejection antigens that are recognized by the patients' autologous, tumor directed and specific, cytolytic, CD8+ T lymphocyte clones (CTL). The MAGE family of genes codes an important group of antigens. It was identified that melanomas and primary glial brain tumors express common melanoma associated antigens (MAAs). Because MAGE-1 is expressed on a significant proportion of human neoplasms of various histological types (melanoma, brain tumors of glial origin, neuroblastoma, non-small cell lung cancer, breast, gastric, colorectal, ovarian, renal cell carcinomas) and not on normal tissues, the encoded antigen may serve as a marker of early

## Product Details

detection and target for cancer immunotherapy.

Purification: Purified by Protein A/G

## Target Details

Target: MAGEA1

Alternative Name: MAGEA1 ([MAGEA1 Products](#))

Molecular Weight: 42-46kDa

Gene ID: 4100

UniProt: [P43355](#)

## Application Details

Application Notes: Positive Control: Melanoma cell lines. Melanomas, gliomas, neuroblastoma, non-small cell lung cancer, breast, gastric, colorectal, ovarian and renal cell carcinomas.

Known Application: Flow Cytometry (0.5-1 µg/million cells), Immunofluorescence (1-2 µg/mL), Immunohistochemistry (Formalin-fixed) (0.5-1 µg/mL for 30 minutes at RT)(Staining of formalin-fixed tissues requires boiling tissue sections in 10 mM citrate buffer, pH 6.0, for 10-20 min followed by cooling at RT for 20 minutes)Optimal dilution for a specific application should be determined.

Restrictions: For Research Use only

## Handling

Concentration: 200 µg/mL

Buffer: 10 mM PBS with 0.05 % BSA & 0.05 % azide.

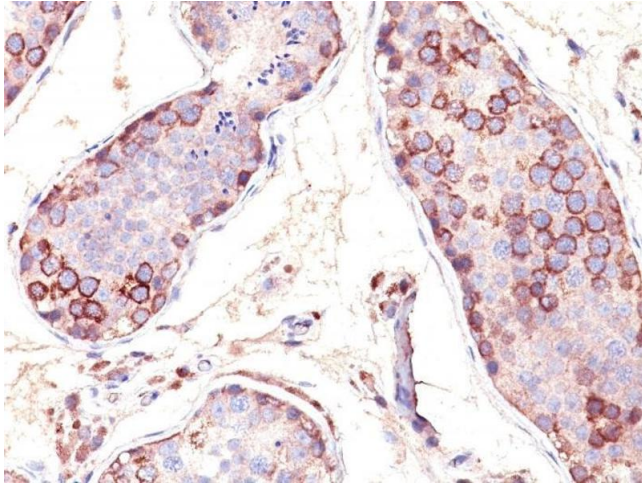
Preservative: Sodium azide

Precaution of Use: This product contains Sodium azide: a POISONOUS AND HAZARDOUS SUBSTANCE which should be handled by trained staff only.

Storage: 4 °C, -80 °C

Storage Comment: Antibody with azide - store at 2 to 8°C. Antibody without azide - store at -20 to -80°C. Antibody is stable for 24 months. Non-hazardous. No MSDS required.

Expiry Date: 24 months



#### Immunohistochemistry

**Image 1.** Formalin-fixed, paraffin-embedded human Testis stained with MAGE-1 Monoclonal Antibody (SPM282).