

Datasheet for ABIN6940030
anti-MDM2 antibody (AA 154-167)



[Go to Product page](#)

3 Images

Overview

Quantity:	100 µg
Target:	MDM2
Binding Specificity:	AA 154-167
Reactivity:	Human, Mouse, Rat
Host:	Mouse
Clonality:	Monoclonal
Conjugate:	This MDM2 antibody is un-conjugated
Application:	Western Blotting (WB), ELISA, Immunohistochemistry (IHC), Coating (Coat), Staining Methods (StM)

Product Details

Immunogen:	A synthetic peptide (aa 154-167) of human MDM2 protein.
Clone:	SMP14
Isotype:	IgG1 kappa
Purification:	Purified by Protein A/G

Target Details

Target:	MDM2
Alternative Name:	MDM2 (MDM2 Products)
Background:	MDM2 is a nuclear phosphoprotein that binds and inhibits transactivation by tumor protein p53.

Target Details

It can promote tumor formation by targeting tumor suppressor proteins, such as p53, for proteasomal degradation. Overexpression of MDM2 can result in excessive inactivation of tumor protein p53, diminishing its tumor suppressor function. This protein also affects the cell cycle, apoptosis, and tumorigenesis through interactions with other proteins, including retinoblastoma 1 and ribosomal protein L5. Overexpression of MDM2 protein is detected in a variety of cancers.

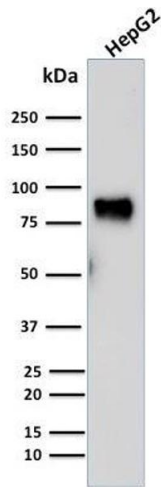
Molecular Weight:	~90kDa
Gene ID:	4193
UniProt:	Q00987
Pathways:	p53 Signaling , PI3K-Akt Signaling , Cell Division Cycle , Fc-epsilon Receptor Signaling Pathway , EGFR Signaling Pathway , Neurotrophin Signaling Pathway , Autophagy , Ubiquitin Proteasome Pathway

Application Details

Application Notes:	Positive Control: HepG2 cells. Breast Carcinoma. Known Application: ELISA (For coating, order antibody without BSA), Western Blot (1-2 µg/mL), Immunohistochemistry (Formalin-fixed) (1-2 µg/mL for 30 minutes at RT)(Staining of formalin-fixed tissues requires boiling tissue sections in 10 mM citrate buffer, pH 6.0, for 10-20 min followed by cooling at RT for 20 minutes)Optimal dilution for a specific application should be determined.
Restrictions:	For Research Use only

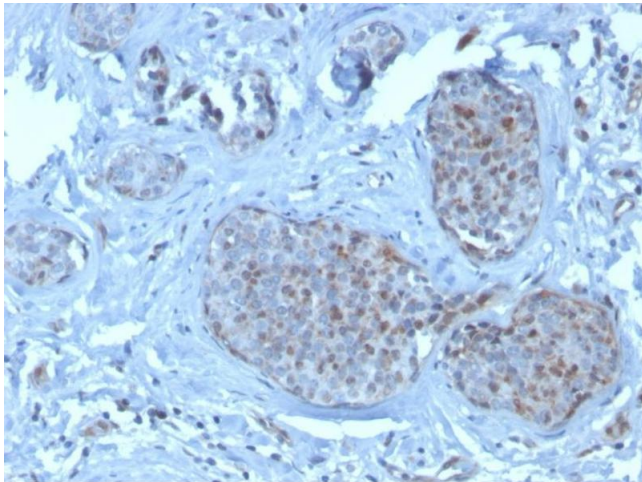
Handling

Concentration:	200 µg/mL
Buffer:	10 mM PBS with 0.05 % BSA & 0.05 % azide.
Preservative:	Sodium azide
Precaution of Use:	This product contains Sodium azide: a POISONOUS AND HAZARDOUS SUBSTANCE which should be handled by trained staff only.
Storage:	4 °C,-80 °C
Storage Comment:	Antibody with azide - store at 2 to 8°C. Antibody without azide - store at -20 to -80°C. Antibody is stable for 24 months. Non-hazardous. No MSDS required.



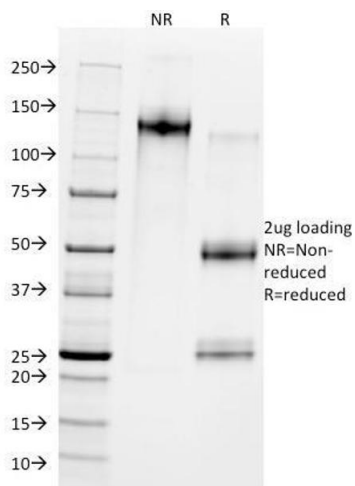
Western Blotting

Image 1. Western Blot Analysis of human HepG2 cell lysate using MDM2 Mouse Monoclonal Antibody (SMP14).



Immunohistochemistry

Image 2. Formalin-fixed, paraffin-embedded human breast carcinoma stained with MDM2 Mouse Monoclonal Antibody (SMP14).



SDS-PAGE

Image 3. SDS-PAGE Analysis Purified MDM2 Mouse Monoclonal Antibody (SMP14). Confirmation of Purity and Integrity of Antibody.