

Datasheet for ABIN6940031
anti-MDM2 antibody (AA 126-254)



[Go to Product page](#)

3 Images

Overview

Quantity:	100 µg
Target:	MDM2
Binding Specificity:	AA 126-254
Reactivity:	Human
Host:	Mouse
Clonality:	Monoclonal
Conjugate:	This MDM2 antibody is un-conjugated
Application:	Immunohistochemistry (IHC), Staining Methods (StM)

Product Details

Immunogen:	Recombinant human MDM2 protein fragment (around aa 126-254) (exact sequence is proprietary)
Clone:	MDM2-2414
Isotype:	IgG1 kappa
Purification:	Purified by Protein A/G

Target Details

Target:	MDM2
Alternative Name:	MDM2 (MDM2 Products)
Background:	MDM2 is a nuclear phosphoprotein that binds and inhibits transactivation by tumor protein p53.

Target Details

It can promote tumor formation by targeting tumor suppressor proteins, such as p53, for proteasomal degradation. Overexpression of MDM2 can result in excessive inactivation of tumor protein p53, diminishing its tumor suppressor function. This protein also affects the cell cycle, apoptosis, and tumorigenesis through interactions with other proteins, including retinoblastoma 1 and ribosomal protein L5. Overexpression of MDM2 protein is detected in a variety of cancers.

Molecular Weight: ~90kDa

Gene ID: 4193

UniProt: [Q00987](#)

Pathways: [p53 Signaling](#), [PI3K-Akt Signaling](#), [Cell Division Cycle](#), [Fc-epsilon Receptor Signaling Pathway](#), [EGFR Signaling Pathway](#), [Neurotrophin Signaling Pathway](#), [Autophagy](#), [Ubiquitin Proteasome Pathway](#)

Application Details

Application Notes: Positive Control: A549 or HeLa cells. Pancreas.
Known Application: Immunohistochemistry (Formalin-fixed) (1-2 µg/mL for 30 minutes at RT)(Staining of formalin-fixed tissues requires boiling tissue sections in 10 mM Citrate Buffer, pH 6.0, for 10-20 min followed by cooling at RT for 20 minutes)Optimal dilution for a specific application should be determined.

Restrictions: For Research Use only

Handling

Concentration: 200 µg/mL

Buffer: 10 mM PBS with 0.05 % BSA & 0.05 % azide.

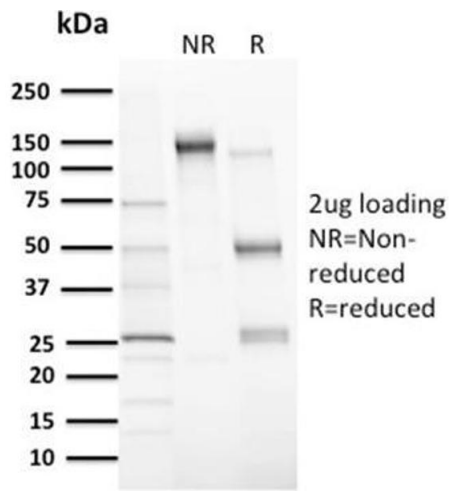
Preservative: Sodium azide

Precaution of Use: This product contains Sodium azide: a POISONOUS AND HAZARDOUS SUBSTANCE which should be handled by trained staff only.

Storage: 4 °C, -80 °C

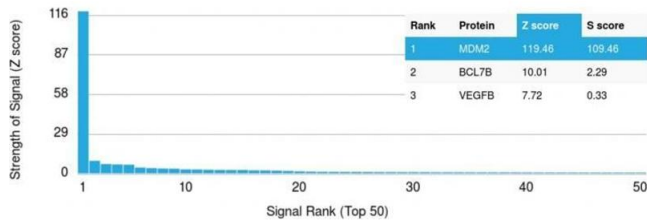
Storage Comment: Antibody with azide - store at 2 to 8°C. Antibody without azide - store at -20 to -80°C. Antibody is stable for 24 months. Non-hazardous. No MSDS required.

Expiry Date: 24 months



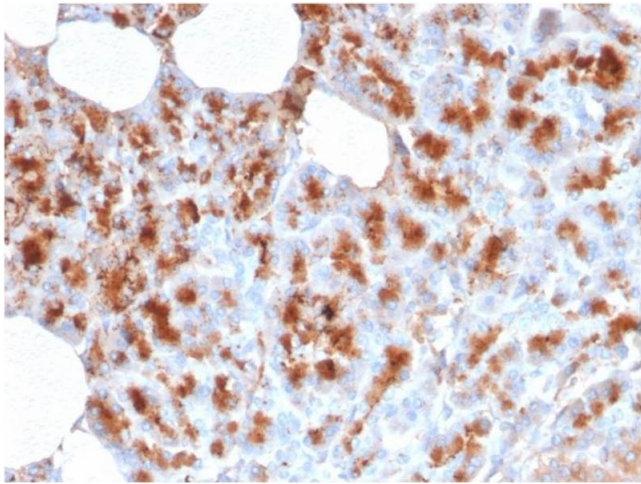
SDS-PAGE

Image 1. SDS-PAGE Analysis Purified MDM2 Mouse Monoclonal Antibody (MDM2/2414). Confirmation of Integrity and Purity of Antibody.



Protein Array

Image 2. Analysis of Protein Array containing more than 19,000 full-length human proteins using MDM2 Mouse Monoclonal Antibody (MDM2/2414). Z- and S- Score: The Z-score represents the strength of a signal that a monoclonal antibody (Monoclonal Antibody) (in combination with a fluorescently-tagged anti-IgG secondary antibody) produces when binding to a particular protein on the HuProt™ array. Z-scores are described in units of standard deviations (SD's) above the mean value of all signals generated on that array. If targets on HuProt™ are arranged in descending order of the Z-score, the S-score is the difference (also in units of SD's) between the Z-score. S-score therefore represents the relative target specificity of a Monoclonal Antibody to its intended target. A Monoclonal Antibody is considered to specific to its intended target, if the Monoclonal Antibody has an S-score of at least 2.5. For example, if a Monoclonal Antibody binds to protein X with a Z-score of 43 and to protein Y with a Z-score of 14, then the S-score for the binding of that Monoclonal Antibody to protein X is equal to 29.



Immunohistochemistry

Image 3. Formalin-fixed, paraffin-embedded human Pancreas stained with MDM2 Mouse Monoclonal Antibody (MDM2/2414).