

Datasheet for ABIN6940035

anti-MFGE8 antibody

4 Images

[Go to Product page](#)

Overview

Quantity:	100 µg
Target:	MFGE8
Reactivity:	Human
Host:	Mouse
Clonality:	Monoclonal
Application:	Immunohistochemistry (IHC), Flow Cytometry (FACS), Immunofluorescence (IF), Staining Methods (StM)

Product Details

Immunogen:	Delipidated human milk fat globule membrane preparation
Clone:	EDM45
Isotype:	IgG1 kappa
Specificity:	Recognizes a protein of 40-45 kDa, identified as human milk fat globule membrane protein (HMFG). HMFG is present on normal human breast epithelial cells and cell lines derived from breast carcinomas, as well as to the outer surface of the human milk fat globule. HMFG is considered as a differentiation marker. It is useful as specific breast epithelial marker and can also provide a tool to study the role of the cell surface in normal and neoplastic mammary development.
Purification:	Purified by Protein A/G

Target Details

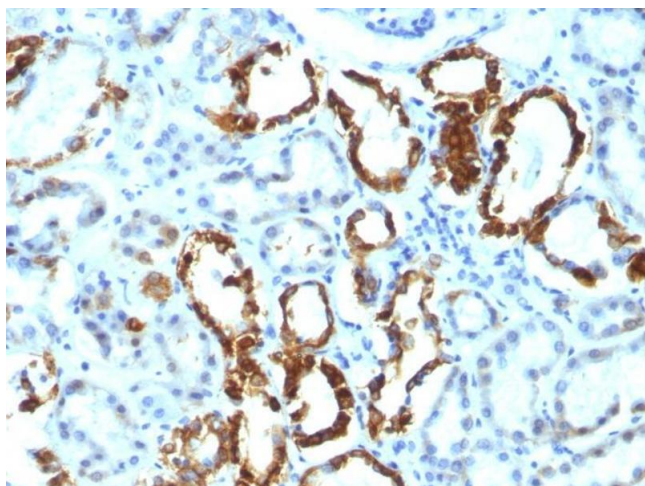
Target:	MFGE8
Alternative Name:	MFGE8 (MFGE8 Products)
Molecular Weight:	45kDa
Gene ID:	4240
UniProt:	Q08431
Pathways:	SARS-CoV-2 Protein Interactome

Application Details

Application Notes:	<p>Positive Control: Normal breast or breast carcinoma.</p> <p>Known Application: Flow Cytometry (0.5-1 µg/million cells), Immunofluorescence (1-2 µg/mL), Immunohistochemistry (Formalin-fixed) (0.5-1 µg/mL for 30 min at RT)(Staining of formalin-fixed tissues requires boiling tissue sections in 10 mM Citrate Buffer, pH 6.0, for 10-20 min followed by cooling at RT for 20 minutes)Optimal dilution for a specific application should be determined</p>
Restrictions:	For Research Use only

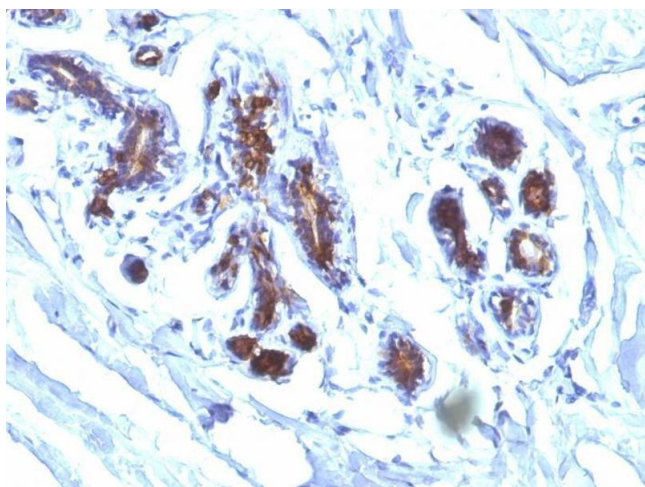
Handling

Concentration:	200 µg/mL
Buffer:	10 mM PBS with 0.05 % BSA & 0.05 % azide.
Preservative:	Sodium azide
Precaution of Use:	This product contains Sodium azide: a POISONOUS AND HAZARDOUS SUBSTANCE which should be handled by trained staff only.
Storage:	4 °C,-80 °C
Storage Comment:	Antibody with azide - store at 2 to 8°C. Antibody without azide - store at -20 to -80°C. Antibody is stable for 24 months. Non-hazardous. No MSDS required.
Expiry Date:	24 months



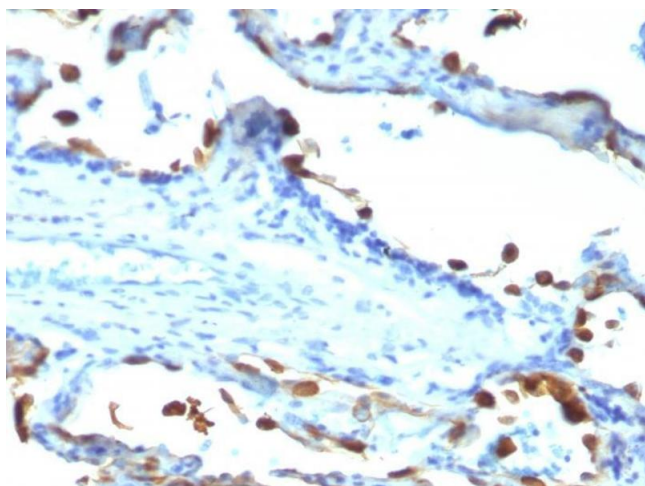
Immunohistochemistry

Image 1. Formalin-fixed, paraffin-embedded human Renal Cell Carcinoma stained with Milk Fat Globule Monoclonal Antibody (EDM45)



Immunohistochemistry

Image 2. Formalin-fixed, paraffin-embedded human Breast Carcinoma stained with Milk Fat Globule Monoclonal Antibody (EDM45)



Immunohistochemistry

Image 3. Formalin-fixed, paraffin-embedded human Lung Carcinoma stained with Milk Fat Globule Monoclonal Antibody (EDM45)

Please check the [product details page](#) for more images. Overall 4 images are available for ABIN6940035.