

Datasheet for ABIN6940036
anti-Mammaglobin A antibody

5 Images

[Go to Product page](#)

Overview

Quantity:	100 µg
Target:	Mammaglobin A (SCGB2A2)
Reactivity:	Human
Host:	Mouse
Clonality:	Monoclonal
Conjugate:	This Mammaglobin A antibody is un-conjugated
Application:	Western Blotting (WB), Immunohistochemistry (IHC), Staining Methods (StM)

Product Details

Immunogen:	Recombinant full-length human Mammaglobin (SCGB2A2) protein
Clone:	MGB1-2000
Isotype:	IgG1 kappa
Purification:	Purified by Protein A/G

Target Details

Target:	Mammaglobin A (SCGB2A2)
Alternative Name:	SCGB2A2 (SCGB2A2 Products)
Background:	Mammaglobin is a 93 amino acid glycoprotein with homology to other secretoglobin-uteroglobin family members. It was originally identified as a breast cancer restricted biomarker by differential screening. Mammaglobin related to secretoglobin family that includes human uteroglobin and lipophilin. Mammaglobin antibody stains cytoplasm of normal breast epithelial

Target Details

cells as well as primary and metastatic breast carcinomas. Mammaglobin expression is absent in prostate, kidney, colon, rectum, small intestine, stomach, pancreas, lung, and thyroid tissues. Mammaglobin may be used as part of an immunohistochemical panel for determination of metastatic breast carcinoma and tumor of unknown primary origin.

Molecular Weight: 18kDa

Gene ID: 4250

UniProt: [Q13296](#)

Application Details

Application Notes: Positive Control: HeLa, MCF-7, SK-BR3 and T47D cells or Breast Carcinoma.
Known Application: Western Blot (1-2 µg/mL), Immunohistochemistry (Formalin-fixed) (1-2 µg/mL for 30 min at RT), (Staining of formalin-fixed tissues requires boiling tissue sections in 10 mM citrate buffer, pH 6.0, for 10-20 min followed by cooling at RT for 20 minutes), Optimal dilution for a specific application should be determined.

Restrictions: For Research Use only

Handling

Concentration: 200 µg/mL

Buffer: 10 mM PBS with 0.05 % BSA & 0.05 % azide.

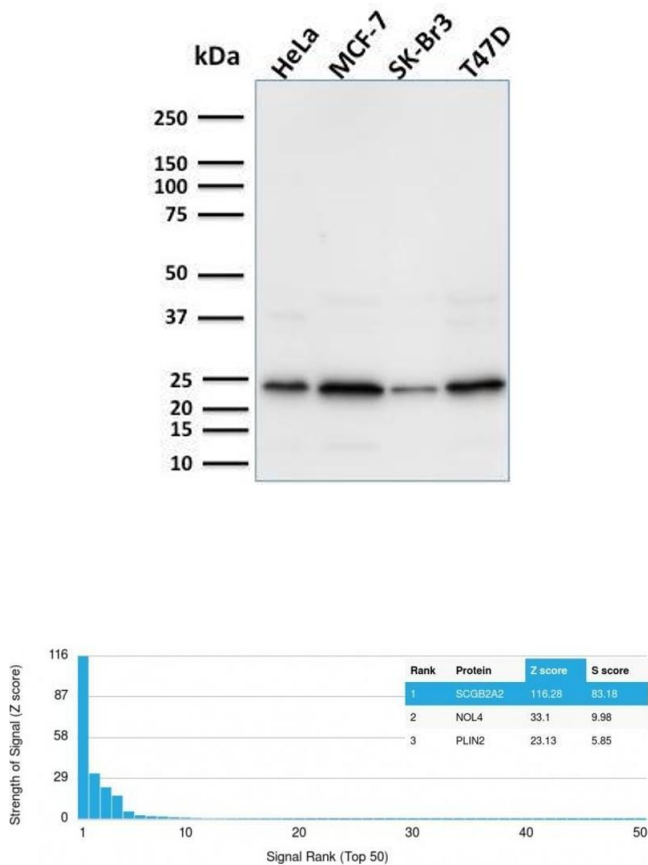
Preservative: Sodium azide

Precaution of Use: This product contains Sodium azide: a POISONOUS AND HAZARDOUS SUBSTANCE which should be handled by trained staff only.

Storage: 4 °C, -80 °C

Storage Comment: Antibody with azide - store at 2 to 8°C. Antibody without azide - store at -20 to -80°C. Antibody is stable for 24 months. Non-hazardous. No MSDS required.

Expiry Date: 24 months

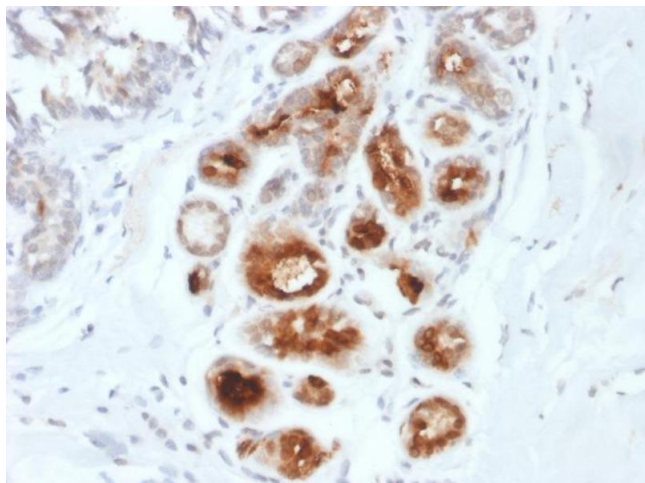


Western Blotting

Image 1. Western Blot Analysis using Mouse Mammaglobin-Monospecific Monoclonal Antibody (MGB1/2000).

Protein Array

Image 2. Analysis of Protein Array containing >19,000 full-length human proteins using Mammaglobin-Monospecific (SCGB2A2) Mouse Monoclonal Antibody (MGB1/2000) Z- and S- Score: The Z-score represents the strength of a signal that a monoclonal antibody (MAb) (in combination with a fluorescently-tagged anti-IgG secondary antibody) produces when binding to a particular protein on the HuProt™ array. Z-scores are described in units of standard deviations (SDs) above the mean value of all signals generated on that array. If targets on HuProt™ are arranged in descending order of the Z-score, the S-score is the difference (also in units of SDs) between the Z-score. S-score therefore represents the relative target specificity of a MAb to its intended target. A MAb is considered to specific to its intended target, if the MAb has an S-score of at least 2.5. For example, if a MAb binds to protein X with a Z-score of 43 and to protein Y with a Z-score of 14, then the S-score for the binding of that MAb to protein X is equal to 29.



Immunohistochemistry

Image 3. Formalin-fixed, paraffin-embedded human Breast Carcinoma stained with Mammaglobin-Monospecific Mouse Monoclonal Antibody (MGB1/2000).

Please check the [product details page](#) for more images. Overall 5 images are available for ABIN6940036.