

Datasheet for ABIN6940039

**Recombinant anti-Mammaglobin A antibody**

5 Images

[Go to Product page](#)

## Overview

Quantity:	100 µg
Target:	Mammaglobin A (SCGB2A2)
Reactivity:	Human
Host:	Rabbit
Antibody Type:	Recombinant Antibody
Clonality:	Monoclonal
Conjugate:	This Mammaglobin A antibody is un-conjugated
Application:	Western Blotting (WB), Immunohistochemistry (IHC), Staining Methods (StM)

## Product Details

Immunogen:	Recombinant full-length human Mammaglobin (SCGB2A2) protein
Clone:	MGB1-2682R
Isotype:	IgG
Purification:	Purified by Protein A/G

## Target Details

Target:	Mammaglobin A (SCGB2A2)
Alternative Name:	SCGB2A2 ( <a href="#">SCGB2A2 Products</a> )
Background:	Mammaglobin is a 93 amino acid glycoprotein with homology to other secretoglobin-uteroglobin family members. It was originally identified as a breast cancer restricted biomarker

## Target Details

by differential screening. Mammaglobin related to secretoglobulin family that includes human uteroglobin and lipophilin. Mammaglobin antibody stains cytoplasm of normal breast epithelial cells as well as primary and metastatic breast carcinomas. Mammaglobin expression is absent in prostate, kidney, colon, rectum, small intestine, stomach, pancreas, lung, and thyroid tissues. Mammaglobin may be used as part of an immunohistochemical panel for determination of metastatic breast carcinoma and tumor of unknown primary origin.

Molecular Weight: 18kDa

Gene ID: 4250

UniProt: [Q13296](#)

## Application Details

Application Notes: Positive Control: HeLa, MCF-7, SK-Br3 and T47D cells. Breast Carcinoma.  
Known Application: Western Blot (1-2 µg/mL), Immunohistochemistry (Formalin-fixed) (0.1-0.2 µg/mL for 30 min at RT)(Staining of formalin-fixed tissues requires boiling tissue sections in 10 mM citrate buffer, pH 6.0, for 10-20 min followed by cooling at RT for 20 minutes)Optimal dilution for a specific application should be determined.

Restrictions: For Research Use only

## Handling

Concentration: 200 µg/mL

Buffer: 10 mM PBS with 0.05 % BSA & 0.05 % azide.

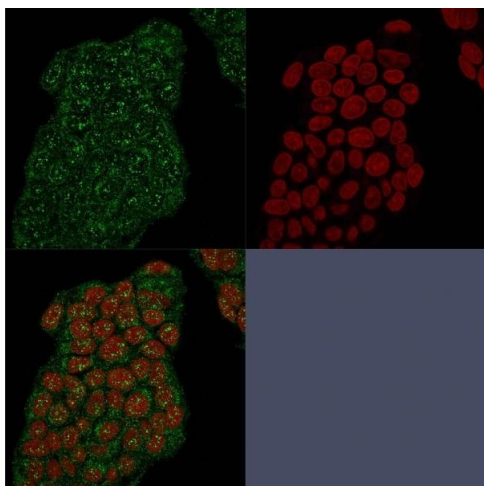
Preservative: Sodium azide

Precaution of Use: This product contains Sodium azide: a POISONOUS AND HAZARDOUS SUBSTANCE which should be handled by trained staff only.

Storage: 4 °C,-80 °C

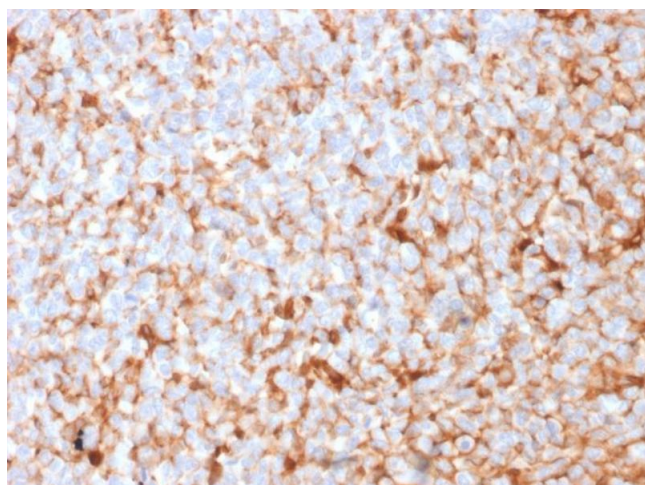
Storage Comment: Antibody with azide - store at 2 to 8°C. Antibody without azide - store at -20 to -80°C. Antibody is stable for 24 months. Non-hazardous. No MSDS required.

Expiry Date: 24 months



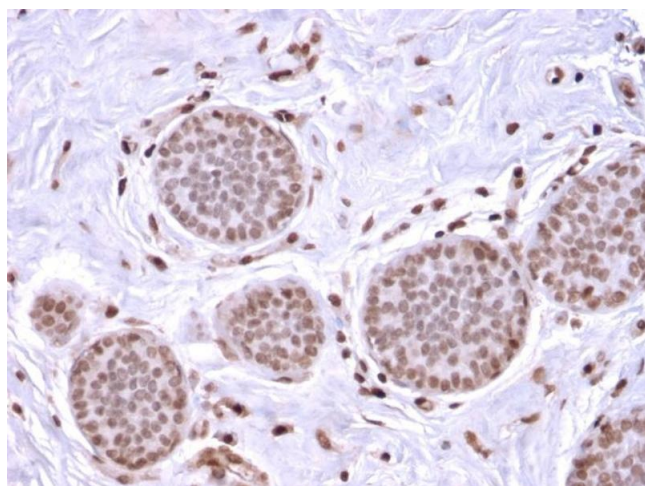
#### Immunofluorescence

**Image 1.** Immunofluorescence Analysis of MCF-7 cells using Mammaglobin Recombinant Rabbit Monoclonal Antibody (MGB/2682R) followed by goat anti-mouse IgG-CF488, counterstained with RedDot.



#### Immunohistochemistry

**Image 2.** Formalin-fixed, paraffin-embedded human Breast Carcinoma stained with Mammaglobin Recombinant Rabbit Monoclonal Antibody (MGB1/2682R).



#### Immunohistochemistry

**Image 3.** Formalin-fixed, paraffin-embedded human Breast Carcinoma stained with Mammaglobin Recombinant Rabbit Monoclonal Antibody (MGB1/2682R).

Please check the [product details page](#) for more images. Overall 5 images are available for ABIN6940039.