



[Go to Product page](#)

Datasheet for ABIN6940047

anti-MITF antibody

2 Images

Overview

Quantity:	100 µg
Target:	MITF
Reactivity:	Human
Host:	Mouse
Clonality:	Monoclonal
Conjugate:	This MITF antibody is un-conjugated
Application:	Immunohistochemistry (IHC), Staining Methods (StM)

Product Details

Immunogen:	NH2 terminus fragment of human Mi protein
Clone:	D5
Isotype:	IgG1 kappa
Specificity:	MITF (microphthalmia transcription factor) is a basic helix-loop-helix-leucine-zipper (bHLH-Zip) transcription factor that regulates the development and survival of melanocytes and retinal pigment epithelium, and also is involved in transcription of pigmentation enzyme genes such as tyrosinase TRP1 and TRP2. MITF has been shown to be phosphorylated by MAP kinase in response to c-kit activation, resulting in upregulation of MITF transcriptional activity. Mutations of the MITF gene are associated with the autosomal dominant hereditary deafness and pigmentation condition, Waardenburg Syndrome type 2A. Multiple isoforms of MITF exist, including MITF-A, MITF-B, MITF-C, MITF-H, and MITF-M, which differ in the amino-terminal domain and in their expression patterns. The MITF-M isoform is restricted to the melanocyte cell lineage. Anti-MITF, D5, recognizes a nuclear protein, which is expressed in the majority of

Product Details

primary and metastatic epithelioid malignant melanomas as well as in normal melanocytes, benign nevi and dysplastic nevi.

No Cross-Reactivity: Mouse (Murine), Rat (Rattus)

Purification: Purified by Protein A/G

Target Details

Target: MITF

Alternative Name: MITF ([MITF Products](#))

Molecular Weight: 52-56kDa (doublet)

Gene ID: 4286

UniProt: [O75030](#)

Pathways: [Chromatin Binding](#)

Application Details

Application Notes: Positive Control: Jurkat, A-431, HeLa or 501 Mel human melanoma cells. Melanoma.
Known Application: Immunohistochemistry (Formalin-fixed) (1-2 µg/mL for 30 minutes at RT)(Staining of formalin-fixed tissues requires boiling tissue sections in 10 mM citrate buffer, pH 6.0, for 10-20 min followed by cooling at RT for 20 minutes)Optimal dilution for a specific application should be determined.

Restrictions: For Research Use only

Handling

Concentration: 200 µg/mL

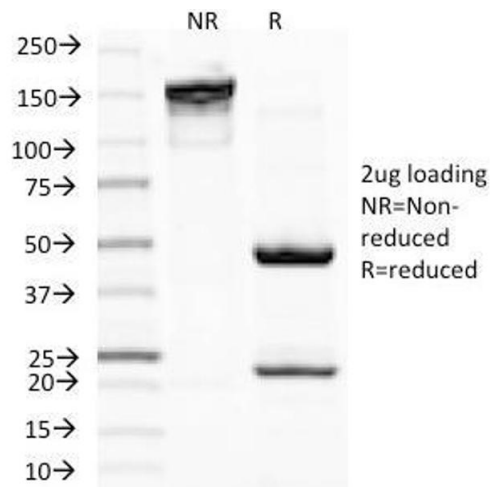
Buffer: 10 mM PBS with 0.05 % BSA & 0.05 % azide.

Preservative: Sodium azide

Precaution of Use: This product contains Sodium azide: a POISONOUS AND HAZARDOUS SUBSTANCE which should be handled by trained staff only.

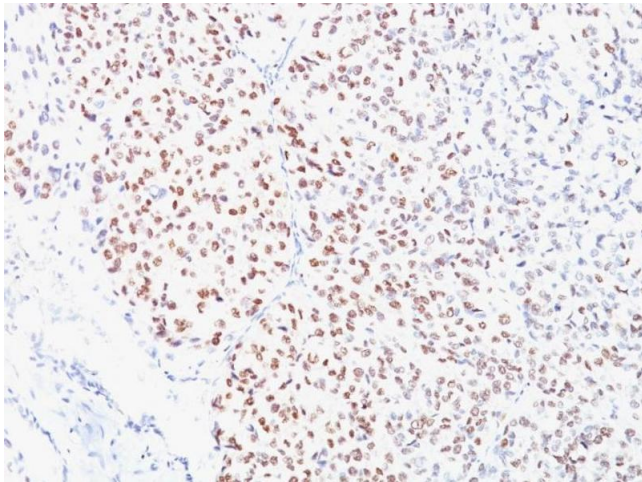
Storage: 4 °C,-80 °C

Storage Comment: Antibody with azide - store at 2 to 8°C. Antibody without azide - store at -20 to -80°C. Antibody is stable for 24 months. Non-hazardous. No MSDS required.



SDS-PAGE

Image 1. SDS-PAGE Analysis Purified MITF Mouse Monoclonal Antibody (D5). Confirmation of Integrity and Purity of Antibody.



Immunohistochemistry

Image 2. Formalin-fixed, paraffin-embedded human Melanoma stained with MITF Mouse Monoclonal Antibody (D5).