

Datasheet for ABIN6940051

Recombinant anti-MITF antibody

3 Images



[Go to Product page](#)

Overview

Quantity:	100 µg
Target:	MITF
Reactivity:	Human, Dog
Host:	Rabbit
Antibody Type:	Recombinant Antibody
Clonality:	Monoclonal
Conjugate:	This MITF antibody is un-conjugated
Application:	Immunofluorescence (IF), Immunohistochemistry (IHC), Flow Cytometry (FACS), Staining Methods (StM)

Product Details

Immunogen:	Recombinant full-length human MITF protein
Clone:	MITF-2987R
Isotype:	IgG
Specificity:	MITF (microphthalmia transcription factor) is a basic helix-loop-helix-leucine-zipper (bHLH-Zip) transcription factor that regulates the development and survival of melanocytes and retinal pigment epithelium, and also is involved in transcription of pigmentation enzyme genes such as tyrosinase TRP1 and TRP2. MITF has been shown to be phosphorylated by MAP kinase in response to c-kit activation, resulting in upregulation of MITF transcriptional activity. Mutations of the MITF gene are associated with the autosomal dominant hereditary deafness and pigmentation condition, Waardenburg Syndrome type 2A. Multiple isoforms of MITF exist,

Product Details

including MITF-A, MITF-B, MITF-C, MITF-H, and MITF-M, which differ in the amino-terminal domain and in their expression patterns. The MITF-M isoform is restricted to the melanocyte cell lineage. This MAb recognizes a nuclear protein, which is expressed in the majority of primary and metastatic epithelioid malignant melanomas as well as in normal melanocytes, benign nevi and dysplastic nevi.

No Cross-Reactivity: Mouse (Murine), Rat (Rattus)

Purification: Purified by Protein A/G

Target Details

Target: MITF

Alternative Name: MITF ([MITF Products](#))

Molecular Weight: 52-56kDa (doublet)

Gene ID: 4286

UniProt: [O75030](#)

Pathways: [Chromatin Binding](#)

Application Details

Application Notes: Positive Control: Jurkat, A-431, HeLa or 501 Mel human melanoma cells. Melanoma.
Known Application: Flow Cytometry (0.5-1 µg/million cells), Immunofluorescence (0.5-1 µg/mL), Immunohistochemistry (Formalin-fixed) (0.5-1.0 µg/mL for 30 minutes at RT)(Staining of formalin-fixed tissues requires boiling tissue sections in 10 mM citrate buffer, pH 6.0, for 10-20 min followed by cooling at RT for 20 minutes)Optimal dilution for a specific application should be determined.

Restrictions: For Research Use only

Handling

Concentration: 200 µg/mL

Buffer: 10 mM PBS with 0.05 % BSA & 0.05 % azide.

Preservative: Sodium azide

Precaution of Use: This product contains Sodium azide: a POISONOUS AND HAZARDOUS SUBSTANCE which should be handled by trained staff only.

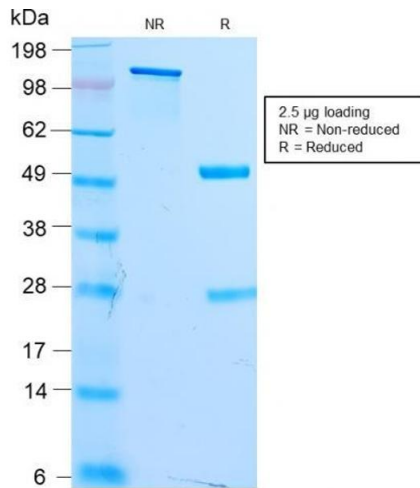
Handling

Storage: 4 °C, -80 °C

Storage Comment: Antibody with azide - store at 2 to 8°C. Antibody without azide - store at -20 to -80°C. Antibody is stable for 24 months. Non-hazardous. No MSDS required.

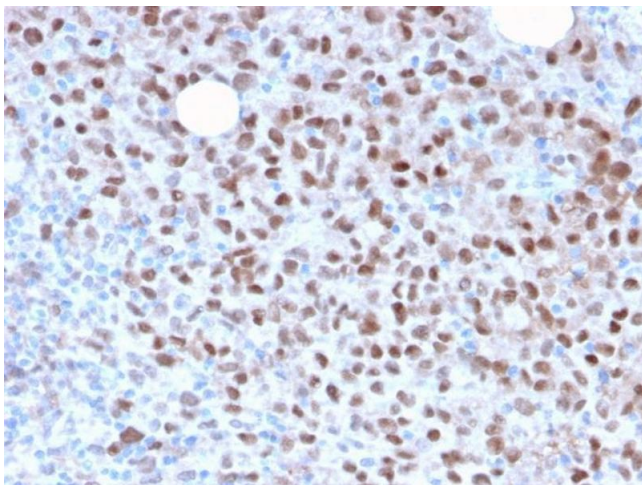
Expiry Date: 24 months

Images



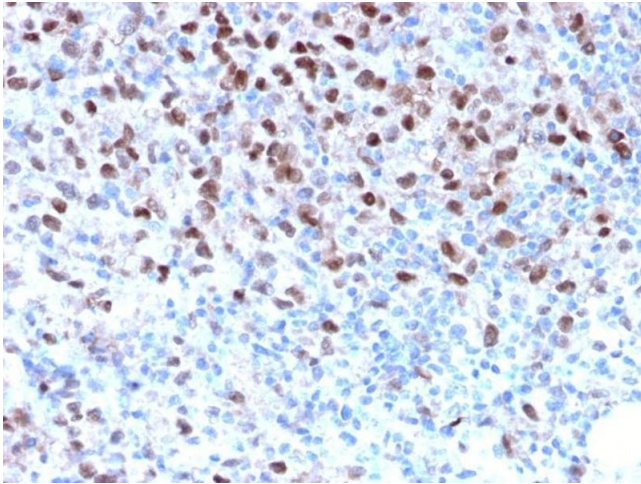
SDS-PAGE

Image 1. SDS-PAGE Analysis Purified MITF Recombinant Rabbit Monoclonal Antibody (MITF/2987R). Confirmation of Purity and Integrity of Antibody.



Immunohistochemistry

Image 2. Formalin-fixed, paraffin-embedded human Melanoma stained with MITF Recombinant Rabbit Monoclonal Antibody (MITF/2987R).



Immunohistochemistry

Image 3. Formalin-fixed, paraffin-embedded human Melanoma stained with MITF Recombinant Rabbit Monoclonal Antibody (MITF/2987R).