

Datasheet for ABIN6940057

anti-MLH1 antibody

1 Image

[Go to Product page](#)

Overview

Quantity:	100 µg
Target:	MLH1
Reactivity:	Human
Host:	Mouse
Clonality:	Monoclonal
Conjugate:	This MLH1 antibody is un-conjugated
Application:	ELISA, Coating (Coat)

Product Details

Immunogen:	Recombinant human MLH1 protein
Clone:	MLH1-1324
Isotype:	IgG2b kappa
Specificity:	<p>This MAbs recognizes a protein of 83 kDa, identified as MLH1. Defects in MLH1 are the cause of hereditary non-polyposis colorectal cancer type 2 (HNPCC2). Heterodimerizes with PMS2 to form MutL alpha, a component of the post-replicative DNA mismatch repair system (MMR). DNA repair is initiated by MutS alpha (MSH2-MSH6) or MutS beta (MSH2-MSH6) binding to a dsDNA mismatch, then MutL alpha is recruited to the heteroduplex. Assembly of the MutL-MutS-heteroduplex ternary complex in presence of RFC and PCNA is sufficient to activate endonuclease activity of PMS2. It introduces single-strand breaks near the mismatch and thus generates new entry points for the exonuclease EXO1 to degrade the strand containing the mismatch. DNA methylation would prevent cleavage and therefore assure that only the newly mutated DNA strand is going to be corrected. MutL alpha (MLH1-PMS2) interacts physically</p>

Product Details

with the clamp loader subunits of DNA polymerase III, suggesting that it may play a role to recruit the DNA polymerase III to the site of the MMR. Also implicated in DNA damage signaling, a process, which induces cell cycle arrest and can lead to apoptosis in case of major DNA damages. Heterodimerizes with MLH3 to form MutL gamma, which plays a role in meiosis.

Purification: Purified by Protein A/G

Target Details

Target: MLH1

Alternative Name: MLH1 ([MLH1 Products](#))

Molecular Weight: 85kDa

Gene ID: 4292

UniProt: [P40692](#)

Pathways: [DNA Damage Repair](#), [Production of Molecular Mediator of Immune Response](#)

Application Details

Application Notes: Positive Control: Molt-4, HeLa or Jurkat cells. Lymph node or Colon, breast, lung, testis, prostate or thyroid carcinoma.

Known Application: ELISA (Use Ab at 2-4 µg/mL for coating) (Order Ab without BSA), Optimal dilution for a specific application should be determined.

Restrictions: For Research Use only

Handling

Concentration: 200 µg/mL

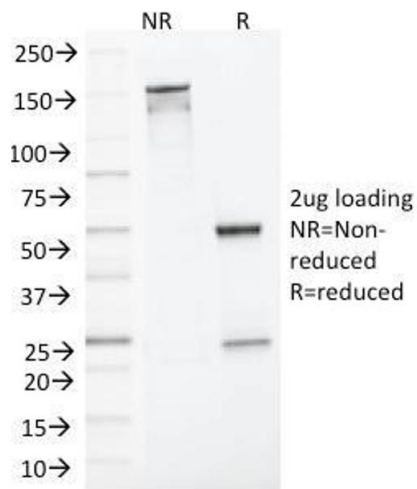
Buffer: 10 mM PBS with 0.05 % BSA & 0.05 % azide.

Preservative: Sodium azide

Precaution of Use: This product contains Sodium azide: a POISONOUS AND HAZARDOUS SUBSTANCE which should be handled by trained staff only.

Storage: 4 °C,-80 °C

Storage Comment: Antibody with azide - store at 2 to 8°C. Antibody without azide - store at -20 to -80°C. Antibody is stable for 24 months. Non-hazardous. No MSDS required.



SDS-PAGE

Image 1. SDS-PAGE Analysis Purified MLH1 Mouse Monoclonal Antibody (MLH1/1324). Confirmation of Integrity and Purity of Antibody