



[Go to Product page](#)

Datasheet for ABIN6940062  
**anti-MME antibody (AA 583-740)**

4 Images

Overview

Quantity:	100 µg
Target:	MME
Binding Specificity:	AA 583-740
Reactivity:	Human
Host:	Mouse
Clonality:	Monoclonal
Application:	Immunohistochemistry (IHC), ELISA, Staining Methods (StM), Coating (Coat)

Product Details

Immunogen:	Recombinant human CD10 protein fragment (aa 583-740) (exact sequence is proprietary)
Clone:	MME-2579
Isotype:	IgG1 kappa
Specificity:	Recognizes a 100 kDa glycoprotein, identified as CD10, also known as Common Acute Lymphocytic Leukemia Antigen (CALLA). It is a cell surface enzyme with neutral metalloendopeptidase activity, which inactivates a variety of biologically active peptides. CD10 is expressed on the cells of lymphoblastic, Burkitt s, and follicular germinal center lymphomas, and on cells from patients with chronic myelocytic leukemia (CML). It is also expressed on the surface of normal early lymphoid progenitor cells, immature B cells within adult bone marrow and germinal center B cells within lymphoid tissue. CD10 is also present on breast myoepithelial cells, bile canaliculi, fibroblasts, with especially high expression on the brush border of kidney and gut epithelial cells.

## Product Details

---

Purification: Purified by Protein A/G

## Target Details

---

Target: MME

Alternative Name: MME ([MME Products](#))

Target Type: Chemical

Molecular Weight: 100kDa

Gene ID: 4311

UniProt: [P08473](#)

Pathways: [RTK Signaling](#), [Peptide Hormone Metabolism](#), [Regulation of Systemic Arterial Blood Pressure by Hormones](#), [Smooth Muscle Cell Migration](#)

## Application Details

---

Application Notes: Positive Control: Tonsil, small intestine or kidney (IHC).  
Known Application: ELISA (Use Ab at 2-4 µg/mL for coating) (Order Ab without BSA),  
,Immunohistochemistry (Formalin-fixed) (1-2 µg/mL for 30 minutes at RT),(Staining of formalin-fixed tissues requires boiling tissue sections in 10 mM Tris with 1 mM EDTA, pH 9.0, for 10-20 min followed by cooling at RT for 20 minutes),Optimal dilution for a specific application should be determined.

Restrictions: For Research Use only

## Handling

---

Concentration: 200 µg/mL

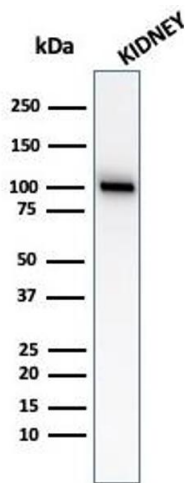
Buffer: 10 mM PBS with 0.05 % BSA & 0.05 % azide.

Preservative: Sodium azide

Precaution of Use: This product contains Sodium azide: a POISONOUS AND HAZARDOUS SUBSTANCE which should be handled by trained staff only.

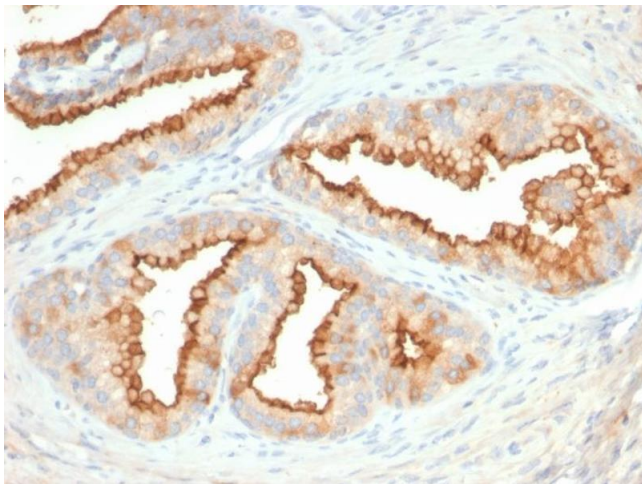
Storage: 4 °C,-80 °C

Storage Comment: Antibody with azide - store at 2 to 8°C. Antibody without azide - store at -20 to -80°C. Antibody is stable for 24 months. Non-hazardous. No MSDS required.



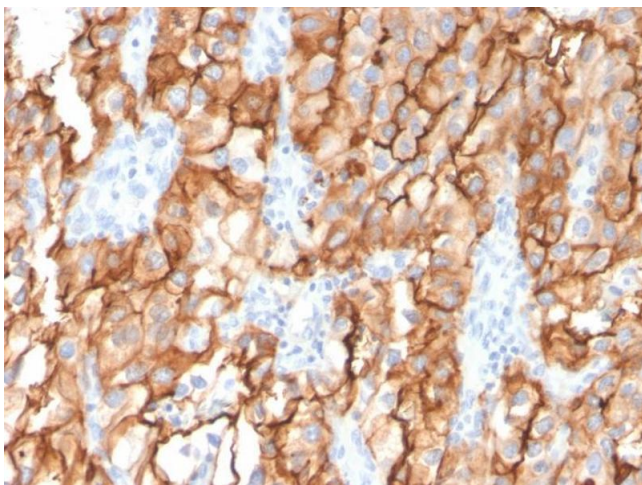
### Western Blotting

**Image 1.** Western blot analysis of kidney tissue lysate using CD10 Mouse Monoclonal Antibody (MME/2579).



### Immunohistochemistry

**Image 2.** Formalin-fixed, paraffin-embedded human Prostate Carcinoma stained with CD10 Mouse Monoclonal Antibody (MME/2579).



### Immunohistochemistry

**Image 3.** Formalin-fixed, paraffin-embedded human Renal Cell Carcinoma stained with CD10 Mouse Monoclonal Antibody (MME/2579).

Please check the [product details page](#) for more images. Overall 4 images are available for ABIN6940062.