



[Go to Product page](#)

Datasheet for ABIN6940158

Recombinant anti-MYH11 antibody

4 Images

Overview

Quantity:	100 µg
Target:	MYH11
Reactivity:	Human, Rat, Cat, Chicken, Cow, Dog, Guinea Pig, Pig, Rabbit
Host:	Rabbit
Antibody Type:	Recombinant Antibody
Clonality:	Monoclonal
Conjugate:	This MYH11 antibody is un-conjugated
Application:	Immunohistochemistry (IHC), Staining Methods (StM)

Product Details

Immunogen:	Recombinant full-length human MYH11 protein
Clone:	MYH11-2303R
Isotype:	IgG
Purification:	Purified by Protein A/G

Target Details

Target:	MYH11
Alternative Name:	MYH11 (MYH11 Products)
Background:	Smooth muscle myosin heavy chain (SM-MHC) is a cytoplasmic structural protein, which is a major component of the contractile apparatus in smooth muscle cells. Expression of smooth

Target Details

muscle myosin is developmentally regulated, appearing early in smooth muscle development, and is specific for smooth muscle development. Two isoforms of smooth muscle myosin heavy chain have been identified, designated MHC-1 and MHC-2. The antibody may be useful for the study of breast tumors as the presence of an intact layer of myoepithelial cells is an important feature, which may distinguish benign breast lesions and carcinoma in situ from invasive tumors.

Molecular Weight: 205kDa (MHC-1) and 200kDa (MHC-2)

Gene ID: 4629

UniProt: [P35749](#)

Application Details

Application Notes: Positive Control: Uterus or normal breast.
Known Application: Immunohistochemistry (Formalin-fixed) (0.5-1 µg/mL for 30 minutes at RT)(Staining of formalin-fixed tissues requires boiling tissue sections in 10 mM citrate buffer, pH 6.0, for 10-20 min followed by cooling at RT for 20 minutes)Optimal dilution for a specific application should be determined.

Restrictions: For Research Use only

Handling

Concentration: 200 µg/mL

Buffer: 10 mM PBS with 0.05 % BSA & 0.05 % azide.

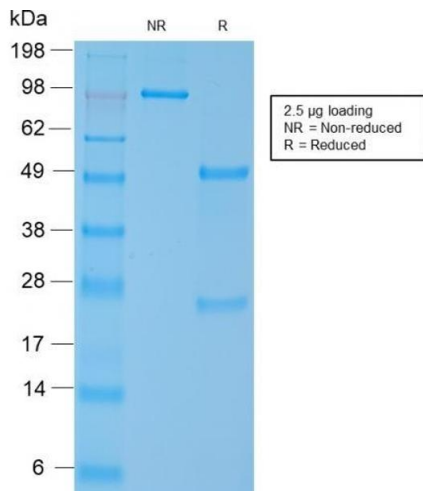
Preservative: Sodium azide

Precaution of Use: This product contains Sodium azide: a POISONOUS AND HAZARDOUS SUBSTANCE which should be handled by trained staff only.

Storage: 4 °C,-80 °C

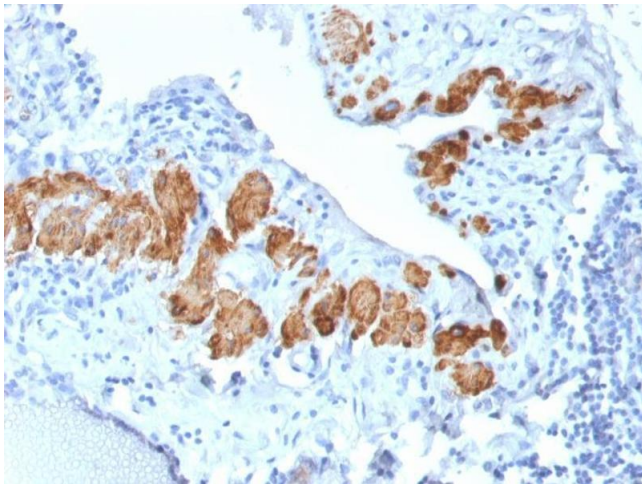
Storage Comment: Antibody with azide - store at 2 to 8°C. Antibody without azide - store at -20 to -80°C. Antibody is stable for 24 months. Non-hazardous. No MSDS required.

Expiry Date: 24 months



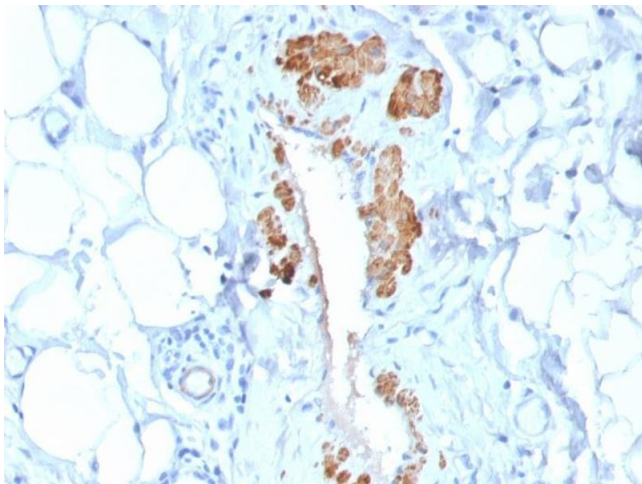
SDS-PAGE

Image 1. SDS-PAGE Analysis Purified SM-MHC Recombinant Rabbit Monoclonal Antibody (MYH11/2303R). Confirmation of Integrity and Purity of the Antibody.



Immunohistochemistry

Image 2. Formalin-fixed, paraffin-embedded human Breast Carcinoma stained with SM-MHC Recombinant Rabbit Monoclonal Antibody (MYH11/2303R).



Immunohistochemistry

Image 3. Formalin-fixed, paraffin-embedded human Breast Carcinoma stained with SM-MHC Recombinant Rabbit Monoclonal Antibody (MYH11/2303R).

Please check the [product details page](#) for more images. Overall 4 images are available for ABIN6940158.