

Datasheet for ABIN6940207

anti-Nkx2-2 antibody[Go to Product page](#)**1** Image

Overview

Quantity:	100 µg
Target:	Nkx2-2
Reactivity:	Human
Host:	Rabbit
Clonality:	Polyclonal
Conjugate:	This Nkx2-2 antibody is un-conjugated
Application:	Immunohistochemistry (IHC), Staining Methods (StM)

Product Details

Immunogen:	Recombinant human NKX2.2 protein fragment
Isotype:	IgG
Specificity:	Expression of NKX2.2 has been found in neuroendocrine tumors of the gut, making it a potential marker for the study of gastrointestinal neuroendocrine tumors. More recently, NKX2.2 protein was identified as a target of EWS-FLI-1, the fusion protein specific to Ewing sarcoma, and was shown to be differentially upregulated in Ewing sarcoma on the basis of array-based gene expression analysis. It acts as a valuable marker for Ewing sarcoma, with a sensitivity of 93 % and a specificity of 89 %, and aids in the differential diagnosis of small round cell tumors.

Target Details

Target:	Nkx2-2
---------	--------

Target Details

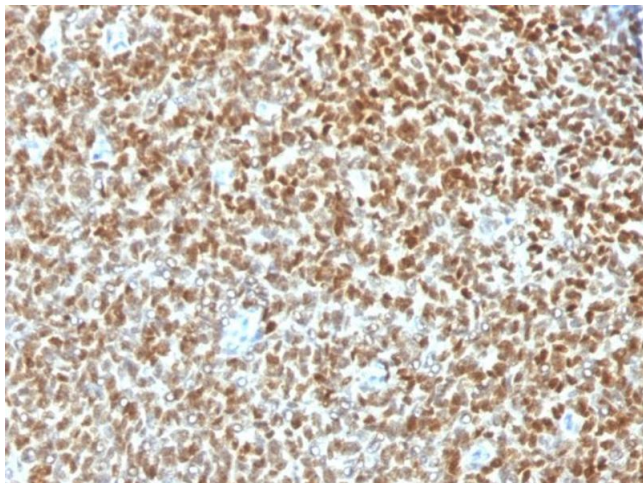
Alternative Name:	NKX2-2 (Nkx2-2 Products)
Molecular Weight:	40-50kDa
Gene ID:	4821
UniProt:	O95096
Pathways:	Dopaminergic Neurogenesis

Application Details

Application Notes:	Positive Control: Pancreas or Ewing's sarcoma. Known Application: Immunohistochemistry (Formalin-fixed) (1-2 µg/mL for 30 minutes at RT)(Staining of formalin-fixed tissues requires boiling tissue sections in 10 mM citrate buffer, pH 6.0, for 10-20 min followed by cooling at RT for 20 minutes)Optimal dilution for a specific application should be determined.
Restrictions:	For Research Use only

Handling

Concentration:	200 µg/mL
Buffer:	10 mM PBS with 0.05 % BSA & 0.05 % azide.
Preservative:	Sodium azide
Precaution of Use:	This product contains Sodium azide: a POISONOUS AND HAZARDOUS SUBSTANCE which should be handled by trained staff only.
Storage:	4 °C,-80 °C
Storage Comment:	Antibody with azide - store at 2 to 8°C. Antibody without azide - store at -20 to -80°C. Antibody is stable for 24 months. Non-hazardous. No MSDS required.
Expiry Date:	24 months



Immunohistochemistry

Image 1. Formalin-fixed, paraffin-embedded human Ewing's Sarcoma stained with NKX2.2 Rabbit Polyclonal Antibody.