

Datasheet for ABIN6940214

**anti-NME1 antibody****2** Images[Go to Product page](#)

## Overview

Quantity:	100 µg
Target:	NME1
Reactivity:	Human
Host:	Mouse
Clonality:	Monoclonal
Conjugate:	This NME1 antibody is un-conjugated
Application:	Western Blotting (WB)

## Product Details

Immunogen:	Recombinant full-length human NME1 protein
Clone:	CPTC-NME1-2
Isotype:	IgG2a kappa
Purification:	Purified by Protein A/G

## Target Details

Target:	NME1
Alternative Name:	NME1 ( <a href="#">NME1 Products</a> )
Background:	The nm23 gene, a potential suppressor of metastasis, was originally identified by differential hybridization between two murine melanoma sub-lines, one with a high and the second with a low metastatic capacity. Highly metastatic sub-lines exhibit much lower levels of nm23 than less metastatic cells. Based on sequence analysis, nm23 appears highly related to nucleotide

## Target Details

diphosphate kinases (NDP-K). In humans, NDP kinase A and B are identical to two isoforms of human nm23 homologs, namely nm23-H1 and H2, respectively. nm23-H2 is identical in sequence to PuF, a transcription factor that binds to nuclease hypersensitive elements at positions 142 to 115 of the human C-Myc promoter.

Molecular Weight: 23kDa

Gene ID: 4830

UniProt: [P15531](#)

Pathways: [Apoptosis](#), [Nucleotide Phosphorylation](#), [Carbohydrate Homeostasis](#), [Ribonucleoside Biosynthetic Process](#)

## Application Details

Application Notes: Positive Control: HepG2 and HeLa whole cell lysates, heart, brain, placenta and lung carcinoma.  
Known Application: Western Blot (0.5-1.0 µg/mL), Optimal dilution for a specific application should be determined.

Restrictions: For Research Use only

## Handling

Concentration: 200 µg/mL

Buffer: 10 mM PBS with 0.05 % BSA & 0.05 % azide.

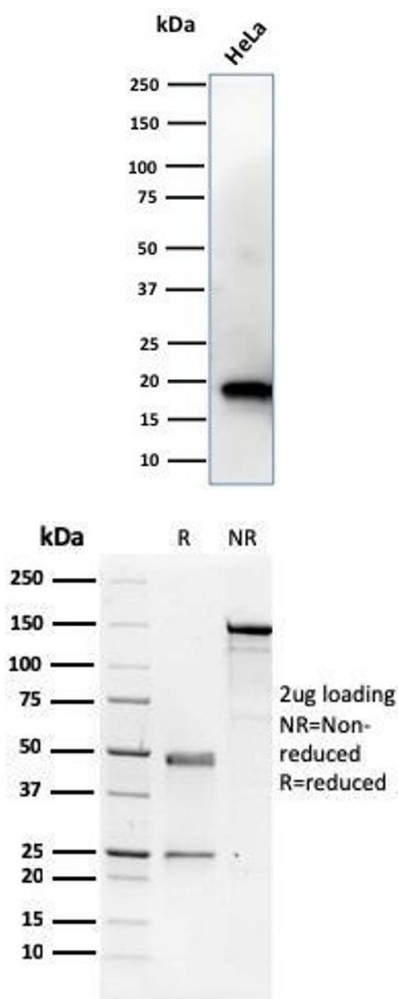
Preservative: Sodium azide

Precaution of Use: This product contains Sodium azide: a POISONOUS AND HAZARDOUS SUBSTANCE which should be handled by trained staff only.

Storage: 4 °C, -80 °C

Storage Comment: Antibody with azide - store at 2 to 8°C. Antibody without azide - store at -20 to -80°C. Antibody is stable for 24 months. Non-hazardous. No MSDS required.

Expiry Date: 24 months



### Western Blotting

**Image 1.** Western Blot Analysis of HeLa cell lysate using NME1 / nm23-H1 Mouse Monoclonal Antibody (CPTC-NME1-2).

### SDS-PAGE

**Image 2.** SDS-PAGE Analysis Purified NME1 / nm23-H1 Mouse Monoclonal Antibody (CPTC-NME1-2). Confirmation of Purity and Integrity of Antibody.