

Datasheet for ABIN6940217
anti-NPM1 antibody (N-Term)[Go to Product page](#)

4 Images

Overview

Quantity:	100 µg
Target:	NPM1
Binding Specificity:	N-Term
Reactivity:	Human
Host:	Mouse
Clonality:	Monoclonal
Conjugate:	This NPM1 antibody is un-conjugated
Application:	Immunohistochemistry (IHC), Staining Methods (StM)

Product Details

Immunogen:	GST fusion protein containing the N-terminal part of nucleophosmin fused to 14 amino acid of ALK protein
Clone:	NA24
Isotype:	IgG1 kappa
Specificity:	Recognizes a 33 kDa glycoprotein, identified as Nucleophosmin (NPM). It is predominantly localized in the nucleus of cells in most tissues. NPM is involved in ribosomal assembly and rRNA transport. It is an abundant protein that is highly phosphorylated by Cdc2 kinase during mitosis. This phosphoprotein moves between the nucleus and the cytoplasm. It is thought to be involved in several processes including regulation of the ARF/p53 pathway. A number of genes are fusion partners, in particular the anaplastic lymphoma kinase gene on chromosome 2. Mutations in exon 12 affecting the C-terminus of the protein are associated with an aberrant

Product Details

cytoplasmic location. Mutations in this gene are associated with acute myeloid leukemia. The antibody may be a useful aid for classification of acute myeloid leukemia.

Purification: Purified by Protein A/G

Target Details

Target: NPM1

Alternative Name: NPM1 ([NPM1 Products](#))

Molecular Weight: 33kDa

Gene ID: 4869

UniProt: [P06748](#)

Pathways: [Ribonucleoprotein Complex Subunit Organization](#), [Ribosome Assembly](#)

Application Details

Application Notes: Positive Control: MCF-7, HeLa or A431 cells. Skin, Colon.
Known Application: Immunohistochemistry (Formalin-fixed) (1-2 µg/mL for 30 minutes at RT),(Staining of formalin-fixed tissues requires boiling tissue sections in 10 mM citrate buffer, pH 6.0, for 10-20 min followed by cooling at RT for 20 minutes),Optimal dilution for a specific application should be determined.

Restrictions: For Research Use only

Handling

Concentration: 200 µg/mL

Buffer: 10 mM PBS with 0.05 % BSA & 0.05 % azide.

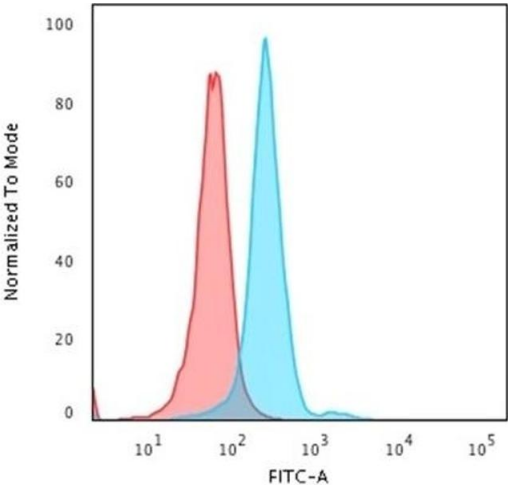
Preservative: Sodium azide

Precaution of Use: This product contains Sodium azide: a POISONOUS AND HAZARDOUS SUBSTANCE which should be handled by trained staff only.

Storage: 4 °C, -80 °C

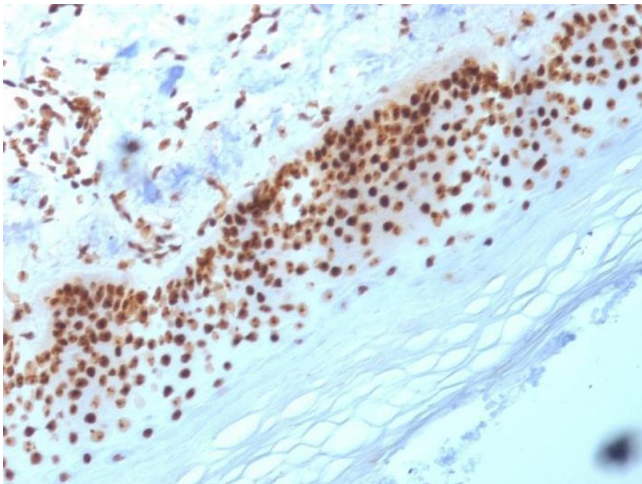
Storage Comment: Antibody with azide - store at 2 to 8°C. Antibody without azide - store at -20 to -80°C. Antibody is stable for 24 months. Non-hazardous. No MSDS required.

Expiry Date: 24 months



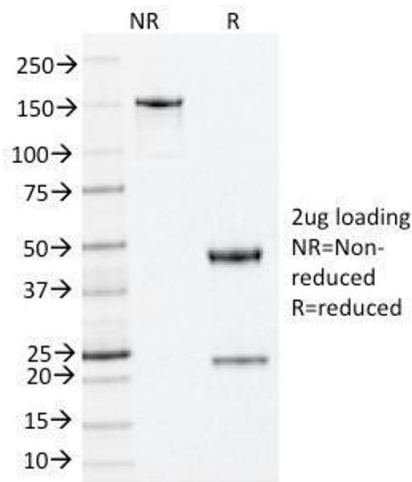
Flow Cytometry

Image 1. Flow Cytometric Analysis of PFA-fixed HeLa cells. Nucleophosmin Mouse Monoclonal Antibody (NA24) followed by goat anti-mouse IgG-CF488 (blue), isotype control (red).



Immunohistochemistry

Image 2. Formalin-fixed, paraffin-embedded human Skin stained with Nucleophosmin Mouse Monoclonal Antibody (NA24).



SDS-PAGE

Image 3. SDS-PAGE Analysis Purified Nucleophosmin Mouse Monoclonal Antibody (NA24). Confirmation of Integrity and Purity of Antibody.

Please check the [product details page](#) for more images. Overall 4 images are available for ABIN6940217.