

Datasheet for ABIN6940225

anti-YBX1 antibody

3 Images

[Go to Product page](#)

Overview

Quantity:	100 µg
Target:	YBX1
Reactivity:	Human
Host:	Mouse
Clonality:	Monoclonal
Conjugate:	This YBX1 antibody is un-conjugated
Application:	Immunohistochemistry (IHC), Staining Methods (StM)

Product Details

Immunogen:	Recombinant human full-length YBX1 protein
Clone:	YBX1-2430
Isotype:	IgG2b kappa
Purification:	Purified by Protein A/G

Target Details

Target:	YBX1
Alternative Name:	YBX1 (YBX1 Products)
Background:	The specificity of this monoclonal antibody to its intended target was validated by HuProt™ Array, containing more than 19,000, full-length human proteins. Y-box binding protein-1 (YBX1) is the prototypic member of the cold shock protein family that fulfills numerous cellular functions. In the nucleus, YBX1 protein orchestrates transcription of proliferation-related genes,

Target Details

whereas in the cytoplasm it associates with mRNA and directs translation. In human tumor entities, such as breast, lung and prostate cancer, cellular YBX1 expression indicates poor clinical outcome, suggesting that YBX1 is an attractive marker to predict patients' prognosis.

Molecular Weight: 36kDa

Gene ID: 4904

UniProt: [P67809](#)

Pathways: [Regulation of Muscle Cell Differentiation](#)

Application Details

Application Notes: Positive Control: MCF-7, HEK293 or PC12 cells. Prostate, Breast or Lung Carcinoma.
Known Application: Immunohistochemistry (Formalin-fixed) (1-2 µg/mL for 30 min at RT)(Staining of formalin-fixed tissues requires boiling tissue sections in 10 mM Citrate Buffer, pH 6.0, for 10-20 min followed by cooling at RT for 20 minutes)Optimal dilution for a specific application should be determined.

Restrictions: For Research Use only

Handling

Concentration: 200 µg/mL

Buffer: 10 mM PBS with 0.05 % BSA & 0.05 % azide.

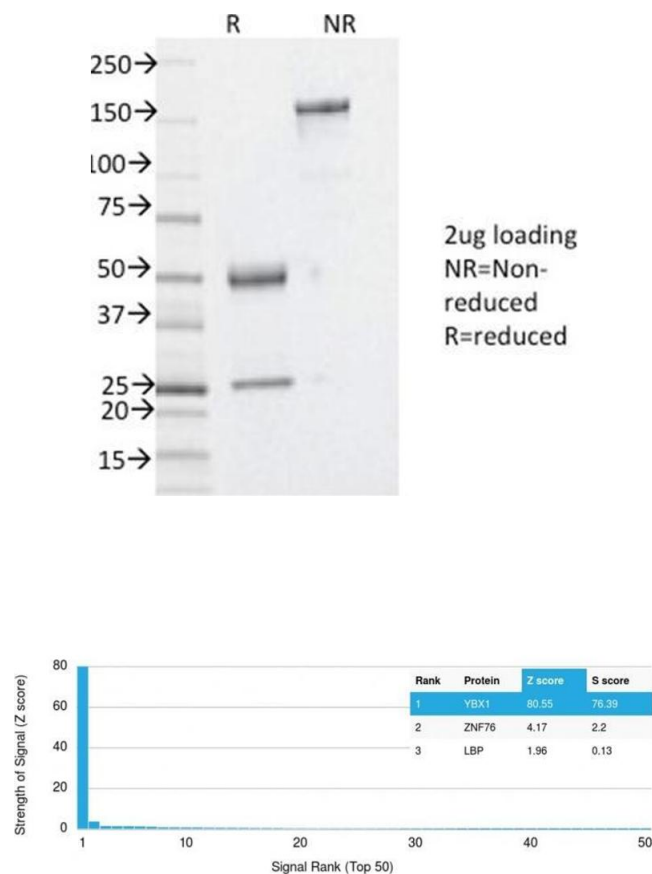
Preservative: Sodium azide

Precaution of Use: This product contains Sodium azide: a POISONOUS AND HAZARDOUS SUBSTANCE which should be handled by trained staff only.

Storage: 4 °C,-80 °C

Storage Comment: Antibody with azide - store at 2 to 8°C. Antibody without azide - store at -20 to -80°C. Antibody is stable for 24 months. Non-hazardous. No MSDS required.

Expiry Date: 24 months

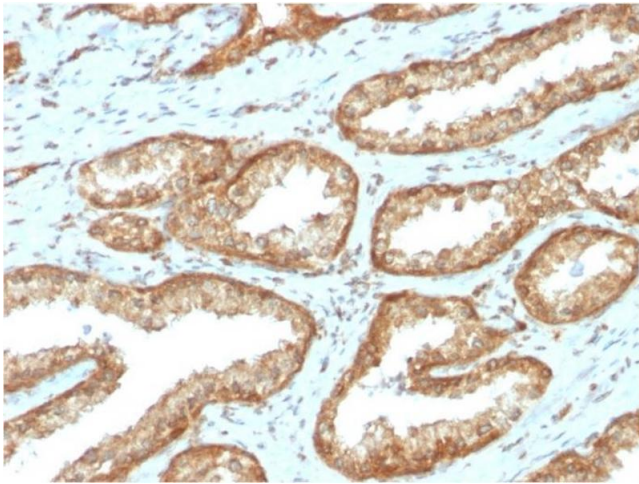


SDS-PAGE

Image 1. SDS-PAGE Analysis Purified YBX1 Mouse Monoclonal Antibody (YBX1/2430). Confirmation of Integrity and Purity of Antibody.

Protein Array

Image 2. Analysis of Protein Array containing more than 19,000 full-length human proteins using YBX1 Mouse Monoclonal Antibody (YBX1/2430) Z- and S- Score: The Z-score represents the strength of a signal that a monoclonal antibody (Monoclonal Antibody) (in combination with a fluorescently-tagged anti-IgG secondary antibody) produces when binding to a particular protein on the HuProt™ array. Z-scores are described in units of standard deviations (SD's) above the mean value of all signals generated on that array. If targets on HuProt™ are arranged in descending order of the Z-score, the S-score is the difference (also in units of SD's) between the Z-score. S-score therefore represents the relative target specificity of a Monoclonal Antibody to its intended target. A Monoclonal Antibody is considered to specific to its intended target, if the Monoclonal Antibody has an S-score of at least 2.5. For example, if a Monoclonal Antibody binds to protein X with a Z-score of 43 and to protein Y with a Z-score of 14, then the S-score for the binding of that Monoclonal Antibody to protein X is equal to 29.



Immunohistochemistry

Image 3. Formalin-fixed, paraffin-embedded human Prostate Carcinoma stained with YBX1 Mouse Monoclonal Antibody (YBX1/2430)