



## Datasheet for ABIN6940233 anti-NUMA1 antibody



[Go to Product page](#)

### 1 Image

#### Overview

Quantity:	100 µg
Target:	NUMA1
Reactivity:	Human
Host:	Mouse
Clonality:	Monoclonal
Conjugate:	This NUMA1 antibody is un-conjugated
Application:	Immunohistochemistry (IHC), Immunofluorescence (IF), Flow Cytometry (FACS), Staining Methods (StM)

#### Product Details

Immunogen:	Colon carcinoma 174T cells
Clone:	A73-B-D12
Isotype:	IgM kappa
Specificity:	Recognizes a phosphorylated protein of 228 kDa, identified as nuclear mitotic apparatus protein (NuMA). Its epitope is resistant to phosphatases. NuMA is intra-nuclear protein and present in nucleus during interphase. At the onset of mitosis, it redistributes from the nucleus to two centrosomal structures that later will become part of the mitotic spindle pole. After anaphase, the protein redistributes from the spindle polar region into reforming nucleus. NuMA is an essential protein during mitosis for the terminal phases of chromosome separation and/or nuclear reassembly. Recently a study shows that NuMA is cleaved to a 180 to 200 kDa during apoptosis. Chromosomal translocation of this gene with the RARA (retinoic acid receptor, alpha) gene on chromosome 17 has been detected in patients with acute promyelocytic

## Product Details

---

leukemia.

## Target Details

---

Target:	NUMA1
Alternative Name:	NUMA1 ( <a href="#">NUMA1 Products</a> )
Molecular Weight:	228kDa
Gene ID:	4926
UniProt:	<a href="#">Q14980</a>
Pathways:	<a href="#">Caspase Cascade in Apoptosis, Regulation of Actin Filament Polymerization, M Phase</a>

## Application Details

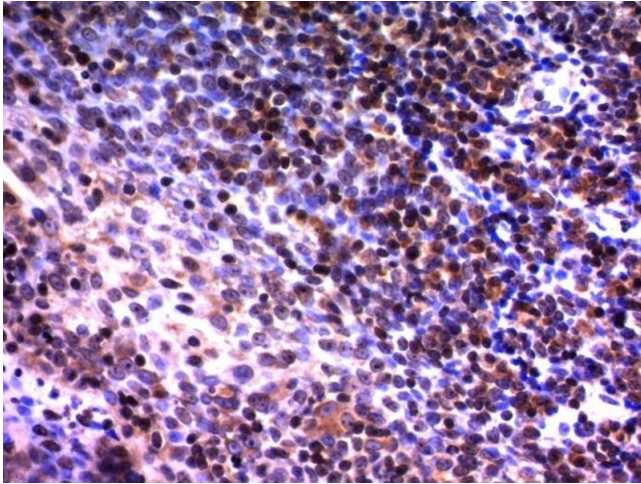
---

Application Notes:	Positive Control: Exponentially growing any cultured human cells. Tonsil or lymph node. Known Application: Flow Cytometry (0.5-1 µg/million cells), Immunofluorescence (0.5-1 µg/mL), Immunohistochemistry (Formalin-fixed) (0.5-1 µg/mL for 30 minutes at RT)(Staining of formalin-fixed tissues requires boiling tissue sections in 1 mM citrate buffer, pH 7.5-8.5, for 10-20 min followed by cooling at RT for 20 minutes)Optimal dilution for a specific application should be determined.
Restrictions:	For Research Use only

## Handling

---

Concentration:	200 µg/mL
Buffer:	200 µg/mL of Ab Purified from Bioreactor Concentrate by PEG precipitation. Prepared in 10 mM PBS with 0.05 % BSA & 0.05 % azide.
Preservative:	Sodium azide
Precaution of Use:	This product contains Sodium azide: a POISONOUS AND HAZARDOUS SUBSTANCE which should be handled by trained staff only.
Storage:	4 °C,-80 °C
Storage Comment:	Antibody with azide - store at 2 to 8°C. Antibody without azide - store at -20 to -80°C. Antibody is stable for 24 months. Non-hazardous. No MSDS required.
Expiry Date:	24 months



### Immunohistochemistry

**Image 1.** Formalin-fixed, paraffin-embedded human tonsil stained with NuMA Monoclonal Antibody (A73-B/D12)