

Datasheet for ABIN6940257
anti-PAX6 antibody (N-Term)



[Go to Product page](#)

2 Images

Overview

Quantity:	100 µg
Target:	PAX6
Binding Specificity:	AA 1-300, N-Term
Reactivity:	Human, Mouse, Rat, Chicken
Host:	Mouse
Clonality:	Monoclonal
Conjugate:	This PAX6 antibody is un-conjugated
Application:	Western Blotting (WB), Immunofluorescence (IF), Flow Cytometry (FACS)

Product Details

Immunogen:	Recombinant fragment (N-terminus, aa 1-300) of human PAX6 protein
Clone:	PAX6-498
Isotype:	IgG1 kappa
Specificity:	Pax genes contain paired domains with strong homology to genes in Drosophila, which are involved in programming early development. Lesions in the Pax-6 gene account for most cases of aniridia, a congenital malformation of the eye, chiefly characterized by iris hypoplasia, which can cause blindness. Pax-6 is involved in other anterior segment malformations besides aniridia, such as Peters' anomaly, a major error in the embryonic development of the eye with corneal clouding with variable iridolenticulocorneal adhesions. The Pax-6 gene encodes a transcriptional regulator that recognizes target genes through its paired-type DNA-binding domain. The paired domain is composed of two distinct DNA-binding subdomains, the amino-

Product Details

terminal subdomain and the carboxy-terminal subdomain, which bind respective consensus DNA sequences. The human Pax-6 gene produces two alternatively spliced isoforms that have the distinct structure of the paired domain.

Purification: Purified by Protein A/G

Target Details

Target: PAX6

Alternative Name: PAX6 ([PAX6 Products](#))

Molecular Weight: 47kDa

Gene ID: 5080

UniProt: [P26367](#)

Pathways: [Peptide Hormone Metabolism](#), [Carbohydrate Homeostasis](#)

Application Details

Application Notes: Positive Control: Pancreas or Cerebellum.
Known Application: Flow Cytometry (0.5-1 µg/million cells), Immunofluorescence (0.5-1 µg/mL), Western Blot (0.5-1 µg/mL), Optimal dilution for a specific application should be determined.

Restrictions: For Research Use only

Handling

Concentration: 200 µg/mL

Buffer: 10 mM PBS with 0.05 % BSA & 0.05 % azide.

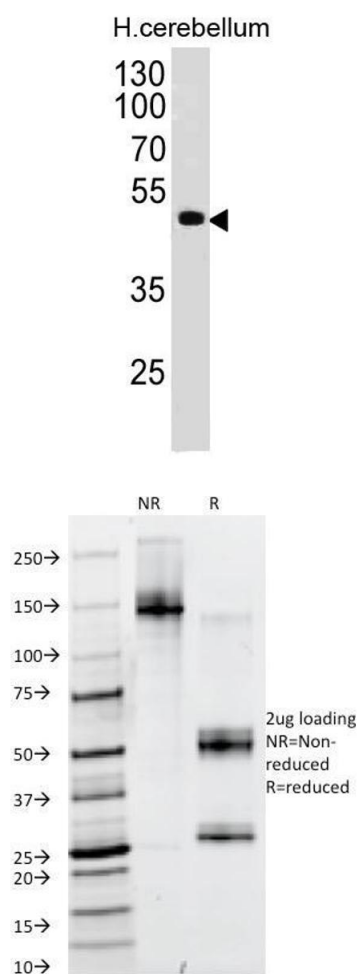
Preservative: Sodium azide

Precaution of Use: This product contains Sodium azide: a POISONOUS AND HAZARDOUS SUBSTANCE which should be handled by trained staff only.

Storage: 4 °C, -80 °C

Storage Comment: Antibody with azide - store at 2 to 8°C. Antibody without azide - store at -20 to -80°C. Antibody is stable for 24 months. Non-hazardous. No MSDS required.

Expiry Date: 24 months



Western Blotting

Image 1. Western Blot of human Cerebellum lysate using PAX6 Monoclonal Antibody (PAX6/498).

SDS-PAGE

Image 2. SDS-PAGE Analysis Purified PAX6 Monoclonal Antibody (PAX6/498). Confirmation of Integrity and Purity of Antibody.