

Datasheet for ABIN6940316
anti-PIP antibody (AA 41-146)

4 Images

[Go to Product page](#)

Overview

Quantity:	100 µg
Target:	PIP
Binding Specificity:	AA 41-146
Reactivity:	Human
Host:	Mouse
Clonality:	Monoclonal
Conjugate:	This PIP antibody is un-conjugated
Application:	Western Blotting (WB), Immunohistochemistry (IHC), Immunofluorescence (IF), Flow Cytometry (FACS), Immunostaining (Ist), Staining Methods (StM)

Product Details

Immunogen:	Recombinant human GCDFP-15 protein fragment (around aa 41-146) (exact sequence is proprietary)
Clone:	PIP-1571
Isotype:	IgG2a kappa
Specificity:	It recognizes a protein of 15 kDa, identified as Gross cystic disease fluid protein 15 (GCDFP-15). It is a major protein component of benign breast gross cysts. It is a known marker of breast cancer, as it is found in approximately 50 % of all breast cancer specimens. GCDFP-15, also known as PIP, for prolactin inducible protein, is a prolactin and androgen controlled protein. This antibody is useful in the identification of metastatic breast carcinoma, or fluid analysis.
Purification:	Purified by Protein A/G

Target Details

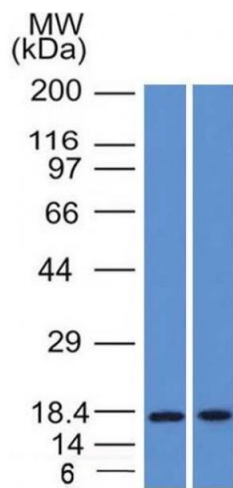
Target:	PIP
Alternative Name:	PIP (PIP Products)
Molecular Weight:	15kDa
Gene ID:	5304
UniProt:	P12273

Application Details

Application Notes:	<p>Positive Control: HepG2 cells. Breast or Pancreas.</p> <p>Known Application: Flow Cytometry (0.5-1 µg/million cells), Immunofluorescence (0.5-1 µg/mL), Western Blot (0.5-1 µg/mL), Immunohistochemistry (Formalin-fixed) (0.5-1 µg/mL for 30 minutes at RT)(Staining of formalin-fixed tissues is enhanced by boiling tissue sections in 10 mM Tris buffer with 1 mM EDTA, pH 9.0, for 10-20 min followed by cooling at RT for 20 minutes)Optimal dilution for a specific application should be determined.</p>
Restrictions:	For Research Use only

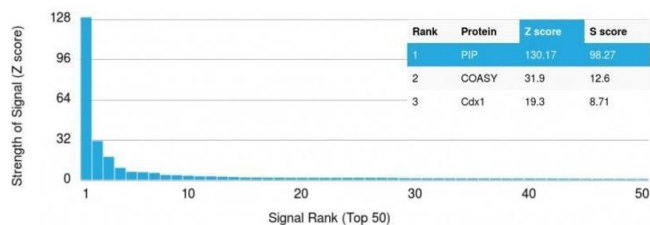
Handling

Concentration:	200 µg/mL
Buffer:	10 mM PBS with 0.05 % BSA & 0.05 % azide.
Preservative:	Sodium azide
Precaution of Use:	This product contains Sodium azide: a POISONOUS AND HAZARDOUS SUBSTANCE which should be handled by trained staff only.
Storage:	4 °C,-80 °C
Storage Comment:	Antibody with azide - store at 2 to 8°C. Antibody without azide - store at -20 to -80°C. Antibody is stable for 24 months. Non-hazardous. No MSDS required.
Expiry Date:	24 months



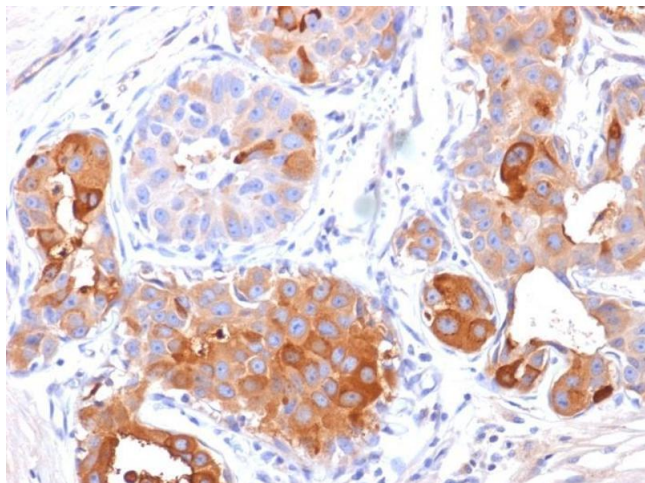
Western Blotting

Image 1. Western Blot Analysis (A) Human Pancreas (B) HepG2 cell lysate Using GCDFP-15 Mouse Monoclonal Antibody (PIP/1571).



Protein Array

Image 2. Analysis of Protein Array containing more than 19,000 full-length human proteins using GCDFP-15 (PIP) Mouse Monoclonal Antibody (PIP/1571) Z- and S- Score: The Z-score represents the strength of a signal that a monoclonal antibody (MAb) (in combination with a fluorescently-tagged anti-IgG secondary antibody) produces when binding to a particular protein on the HuProt™ array. Z-scores are described in units of standard deviations (SD's) above the mean value of all signals generated on that array. If targets on HuProt™ are arranged in descending order of the Z-score, the S-score is the difference (also in units of SD's) between the Z-score. S-score therefore represents the relative target specificity of a MAb to its intended target. A MAb is considered to specific to its intended target, if the MAb has an S-score of at least 2.5. For example, if a MAb binds to protein X with a Z-score of 43 and to protein Y with a Z-score of 14, then the S-score for the binding of that MAb to protein X is equal to 29.



Immunohistochemistry

Image 3. Formalin-fixed, paraffin-embedded human Breast Carcinoma stained with GCDFP-15 Mouse Monoclonal Antibody (PIP/1571).

Please check the [product details page](#) for more images. Overall 4 images are available for ABIN6940316.