

Datasheet for ABIN6940389

anti-MAML3 antibody

5 Images

[Go to Product page](#)

Overview

Quantity:	100 µg
Target:	MAML3
Reactivity:	Human
Host:	Mouse
Clonality:	Monoclonal
Conjugate:	This MAML3 antibody is un-conjugated
Application:	Immunostaining (IS), Immunohistochemistry (IHC), Staining Methods (StM)

Product Details

Immunogen:	Recombinant human MAML3 protein fragment
Clone:	MAML3-1303
Isotype:	IgG1 kappa
Purification:	Purified by Protein A/G

Target Details

Target:	MAML3
Alternative Name:	MAML3 (MAML3 Products)
Background:	MAML3 (mastermind-like protein 3) is a nuclear speckle protein that acts as a transcriptional coactivator for Notch receptors. The Notch signaling pathway influences cell fate by regulating the ability of precursor cells to properly respond to developmental signals. MAML3 is a member of the mastermind-like family of proteins that are human homologs of the Drosophila

Target Details

melanogaster mastermind protein. Through its N-terminal region, MAML3 interacts with the ankyrin repeats of the Notch proteins Notch 1, Notch 2, Notch 3 and Notch 4. This interaction leads to formation of a DNA-binding complex with the Notch proteins and RBP-J a complex that can then induce HES1 gene expression. While the N-terminal domain of MAML3 is essential for proper Notch binding, the C-terminal domain of MAML3 is essential for transcriptional activation. Due to its involvement in cell signaling and transcriptional activation, upregulation of MAML3 is thought to be involved in oncogenesis.

Molecular Weight: 150-170kDa

Gene ID: 55534

UniProt: [Q96JK9](#)

Application Details

Application Notes: Positive Control: MCF-7 cells. Pancreas or Placenta. Cervix or Colon Carcinoma.
Known Application: Immunohistochemistry (Formalin-fixed) (0.5-1.0 µg/mL for 30 minutes at RT)(Staining of formalin-fixed tissues is enhanced by boiling tissue sections in 10 mM Tris with 1 mM EDTA, pH 9.0 for 10-20 min followed by cooling at RT for 20 minutes)Optimal dilution for a specific application should be determined.

Restrictions: For Research Use only

Handling

Concentration: 200 µg/mL

Buffer: 10 mM PBS with 0.05 % BSA & 0.05 % azide.

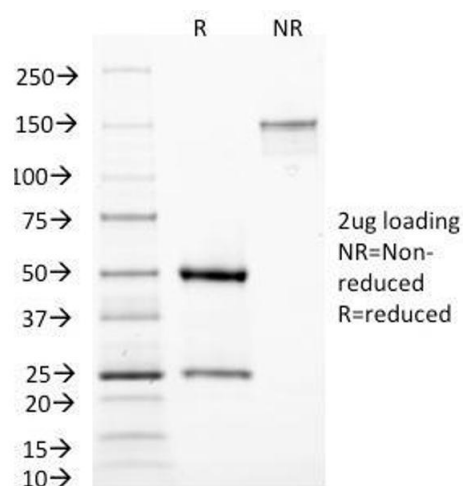
Preservative: Sodium azide

Precaution of Use: This product contains Sodium azide: a POISONOUS AND HAZARDOUS SUBSTANCE which should be handled by trained staff only.

Storage: 4 °C, -80 °C

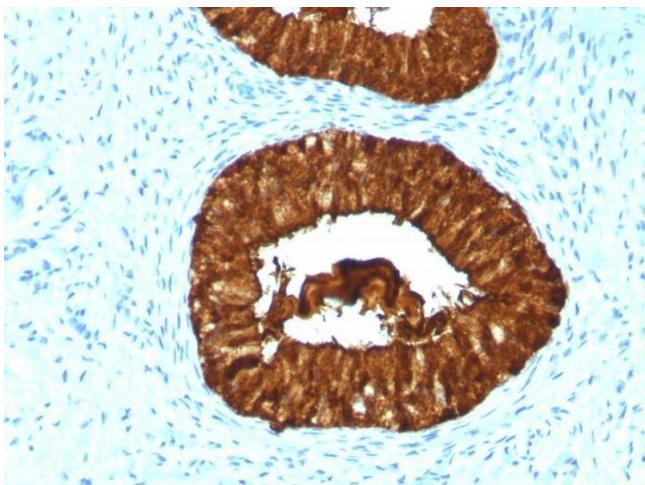
Storage Comment: Antibody with azide - store at 2 to 8°C. Antibody without azide - store at -20 to -80°C. Antibody is stable for 24 months. Non-hazardous. No MSDS required.

Expiry Date: 24 months



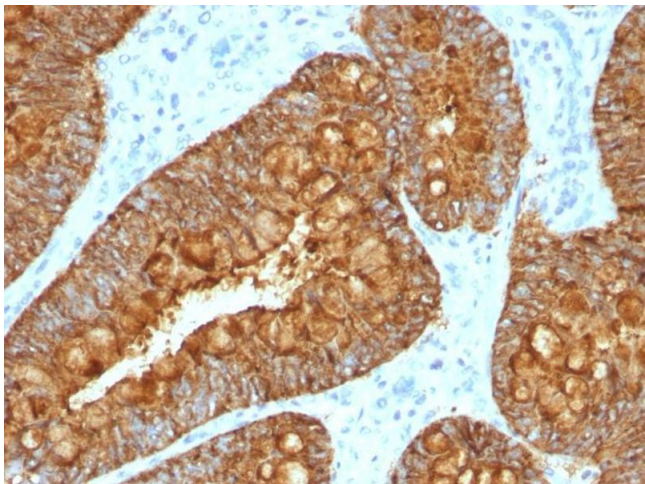
SDS-PAGE

Image 1. SDS-PAGE Analysis Purified MAML3 Monoclonal Antibody (MAML3/1303). Confirmation of Purity and Integrity of Antibody.



Immunohistochemistry

Image 2. Formalin-fixed, paraffin-embedded human Cervical Carcinoma stained with MAML3 Monoclonal Antibody (MAML3/1303).



Immunohistochemistry

Image 3. Formalin-fixed, paraffin-embedded human Colon Carcinoma stained with MAML3 Monoclonal Antibody (MAML3/1303).

Please check the [product details page](#) for more images. Overall 5 images are available for ABIN6940389.