

Datasheet for ABIN6940407

Recombinant anti-Prolactin Receptor antibody**3** Images[Go to Product page](#)

Overview

Quantity:	100 µg
Target:	Prolactin Receptor (PRLR)
Reactivity:	Human
Host:	Mouse
Antibody Type:	Recombinant Antibody
Clonality:	Monoclonal
Conjugate:	This Prolactin Receptor antibody is un-conjugated
Application:	Immunohistochemistry (IHC), Staining Methods (StM)

Product Details

Immunogen:	Recombinant full-length human PRLR protein
Clone:	RPRLR-742
Isotype:	IgG1 kappa
Specificity:	It recognizes a protein of 70 kDa, identified as prolactin receptor. Prolactin is a pituitary hormone involved in the stimulation of milk production, salt and water regulation, growth, development and reproduction. The initial step in its action is the binding to a specific membrane receptor (prolactin receptor), which belongs to the superfamily of class 1 cytokine receptors. The function of the prolactin receptor is mediated, at least in part, by two families of signaling molecules: Janus kinases and signal transducers and activators of transcription.
Purification:	Purified by Protein A/G

Target Details

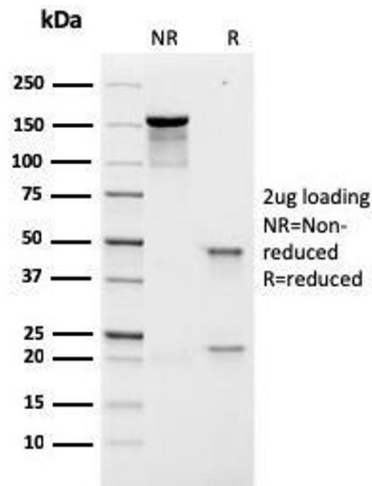
Target:	Prolactin Receptor (PRLR)
Alternative Name:	PRLR (PRLR Products)
Molecular Weight:	70kDa
Gene ID:	5618
UniProt:	P16471
Pathways:	JAK-STAT Signaling , Response to Growth Hormone Stimulus

Application Details

Application Notes:	Positive Control: Testicular Carcinoma. Known Application: Immunohistochemistry (Formalin-fixed. Not suitable for frozen tissues.) (0.5-1 µg/mL for 30 minutes at RT)(Staining of formalin-fixed tissues requires boiling tissue sections in 10 mM citrate buffer, pH 6.0, for 10-20 min followed by cooling at RT for 20 minutes)Optimal dilution for a specific application should be determined.
Restrictions:	For Research Use only

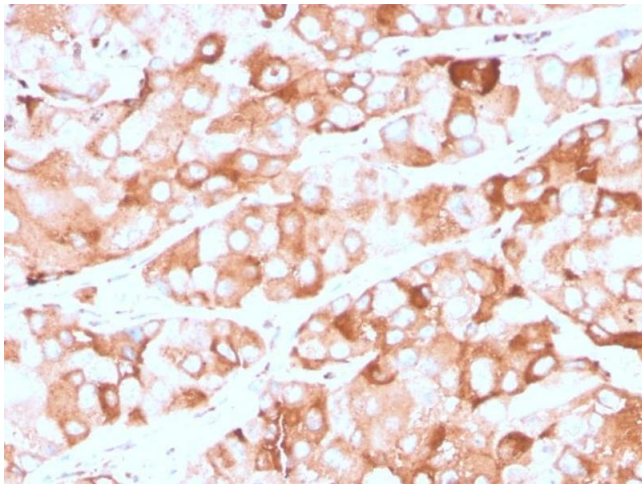
Handling

Concentration:	200 µg/mL
Buffer:	10 mM PBS with 0.05 % BSA & 0.05 % azide.
Preservative:	Sodium azide
Precaution of Use:	This product contains Sodium azide: a POISONOUS AND HAZARDOUS SUBSTANCE which should be handled by trained staff only.
Storage:	4 °C
Storage Comment:	Antibody with azide - store at 2 to 8°C. Antibody is stable for 24 months. ,Non-hazardous. No MSDS required.
Expiry Date:	24 months



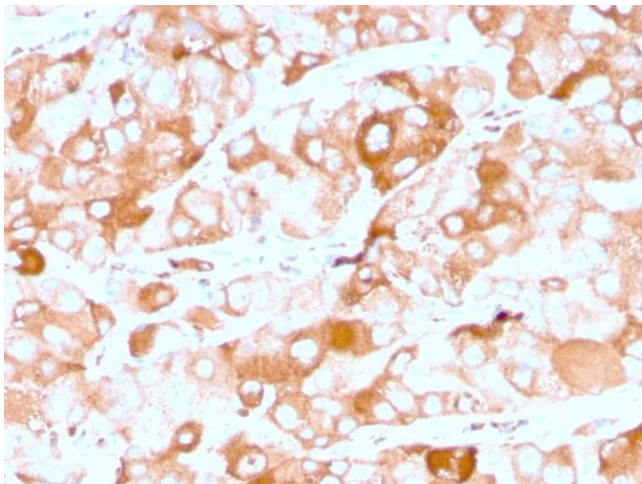
SDS-PAGE

Image 1. SDS-PAGE Analysis Purified Prolactin Receptor Recombinant Mouse Monoclonal (rPRLR742). Confirmation of Integrity and Purity of Antibody.



Immunohistochemistry

Image 2. Formalin-fixed, paraffin-embedded human breast carcinoma stained with Prolactin Receptor Recombinant Mouse Monoclonal Antibody (rPRLR742).



Immunohistochemistry

Image 3. Formalin-fixed, paraffin-embedded human breast carcinoma stained with Prolactin Receptor Recombinant Mouse Monoclonal Antibody (rPRLR742).