

Datasheet for ABIN6940428

Recombinant anti-PTH antibody (AA 32-115)[Go to Product page](#)**3** Images

Overview

Quantity:	100 µg
Target:	PTH
Binding Specificity:	AA 32-115
Reactivity:	Human
Host:	Rabbit
Antibody Type:	Recombinant Antibody
Clonality:	Monoclonal
Conjugate:	This PTH antibody is un-conjugated
Application:	Immunohistochemistry (IHC), Staining Methods (StM)

Product Details

Immunogen:	A recombinant fragment around aa 32-115 of human mature-PTH-polypeptide (exact sequence is proprietary)
Clone:	PTH-2295R
Isotype:	IgG
Specificity:	Epitope of this MAb maps in between aa 1-34. PTH is a hormone produced by the parathyroid gland that regulates the concentration of calcium and phosphorus in extracellular fluid. This hormone elevates blood Ca ²⁺ levels by dissolving the salts in bone and preventing their renal excretion. It is produced in the parathyroid gland as an 84 amino acid single chain polypeptide. It can also be secreted as N-terminal truncated fragments or C-terminal fragments after intracellular degradation, as in case of hypercalcemia. Defects in this gene are a cause of

Product Details

familial isolated hypoparathyroidism (FIH), also called autosomal dominant hypoparathyroidism or autosomal dominant hypocalcemia. FIH is characterized by hypocalcemia and hyperphosphatemia due to inadequate secretion of parathyroid hormone. Symptoms are seizures, tetany and cramps. FIH exist both as autosomal dominant and recessive forms of hypoparathyroidism.

Purification: Purified by Protein A/G

Target Details

Target: PTH

Alternative Name: PTH ([PTH Products](#))

Target Type: Hormone

Molecular Weight: 9kDa

Gene ID: 5741

UniProt: [P01270](#)

Pathways: [cAMP Metabolic Process](#), [Regulation of Carbohydrate Metabolic Process](#)

Application Details

Application Notes: Positive Control: Human parathyroid gland carcinoma.
Known Application: Immunohistochemistry (Formalin-fixed) (0.5-1.0 µg/mL for 30 minutes at RT)(Staining of formalin-fixed tissues requires boiling tissue sections in 10 mM Citrate Buffer, pH 6.0, for 10-20 min followed by cooling at RT for 20 minutes)Optimal dilution for a specific application should be determined.

Restrictions: For Research Use only

Handling

Concentration: 200 µg/mL

Buffer: 10 mM PBS with 0.05 % BSA & 0.05 % azide.

Preservative: Sodium azide

Precaution of Use: This product contains Sodium azide: a POISONOUS AND HAZARDOUS SUBSTANCE which should be handled by trained staff only.

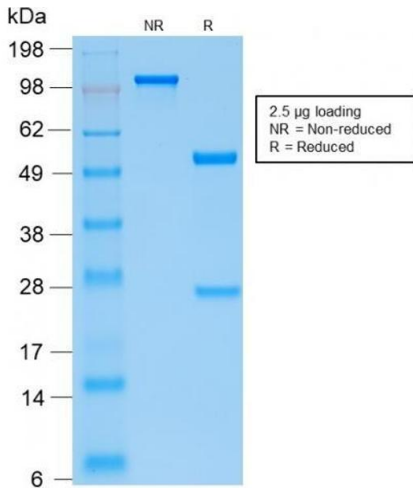
Handling

Storage: 4 °C, -80 °C

Storage Comment: Antibody with azide - store at 2 to 8°C. Antibody without azide - store at -20 to -80°C. Antibody is stable for 24 months. Non-hazardous. No MSDS required.

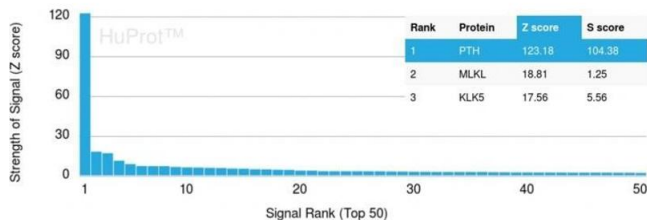
Expiry Date: 24 months

Images



SDS-PAGE

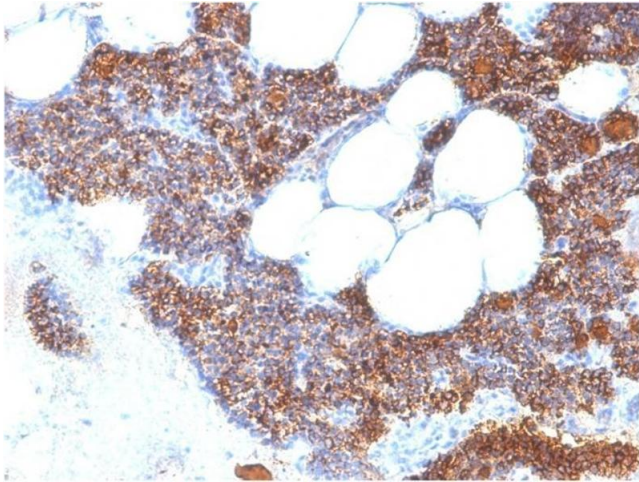
Image 1. SDS-PAGE Analysis Purified PTH Monospecific Recombinant Rabbit Monoclonal Antibody (PTH/2295R). Confirmation of Integrity and Purity of the Antibody.



Protein Array

Image 2. Analysis of Protein Array containing more than 19,000 full-length human proteins using PTH-Monospecific Recombinant Rabbit Monoclonal Antibody (PTH/2295R) Z- and S- Score: The Z-score represents the strength of a signal that a monoclonal antibody (Monoclonal Antibody) (in combination with a fluorescently-tagged anti-IgG secondary antibody) produces when binding to a particular protein on the HuProt™ array. Z-scores are described in units of standard deviations (SD's) above the mean value of all signals generated on that array. If targets on HuProt™ are arranged in descending order of the Z-score, the S-score is the difference (also in units of SD's) between the Z-score. S-score therefore represents the relative target specificity of a Monoclonal Antibody to its intended target. A Monoclonal Antibody is considered to specific to its intended target, if the Monoclonal Antibody has an S-score of at least 2.5. For example, if a Monoclonal Antibody binds to protein X with a

Z-score of 43 and to protein Y with a Z-score of 14, then the S-score for the binding of that Monoclonal Antibody to protein X is equal to 29.



Immunohistochemistry

Image 3. Formalin-fixed, paraffin-embedded human Parathyroid Gland stained with PTH-Monospecific Recombinant Rabbit Monoclonal Antibody (PTH/2295R).