



[Go to Product page](#)

Datasheet for ABIN6940489  
**anti-Cyclin D1 antibody**

3 Images

### Overview

Quantity:	100 µg
Target:	Cyclin D1 (CCND1)
Reactivity:	Human
Host:	Mouse
Clonality:	Monoclonal
Conjugate:	This Cyclin D1 antibody is un-conjugated
Application:	Immunohistochemistry (IHC), Staining Methods (StM)

### Product Details

Immunogen:	Recombinant full-length human CCND1 protein
Clone:	CCND1-2593
Isotype:	IgG1 kappa
Specificity:	Recognizes a protein of 36 kDa, identified as cyclin D1. Cyclin D1, one of the key cell cycle regulators, is a putative proto-oncogene overexpressed in a wide variety of human neoplasms. This antibody neutralizes the activity of cyclin D1 in vivo. About 60 % of mantle cell lymphomas (MCL) contain a t(11, 14)(q13, q32) translocation resulting in over-expression of cyclin D1. This antibody is useful in identifying mantle cell lymphomas (cyclin D1 positive) from CLL/SLL and follicular lymphomas (cyclin D1 negative). Occasionally, hairy cell leukemia and plasma cell myeloma weakly express Cyclin D1.
Purification:	Purified by Protein A/G

## Target Details

---

Target:	Cyclin D1 (CCND1)
Alternative Name:	CCND1 ( <a href="#">CCND1 Products</a> )
Molecular Weight:	36kDa
Gene ID:	595
UniProt:	<a href="#">P24385</a>
Pathways:	<a href="#">PI3K-Akt Signaling</a> , <a href="#">Cell Division Cycle</a> , <a href="#">Mitotic G1-G1/S Phases</a> , <a href="#">ER-Nucleus Signaling</a>

## Application Details

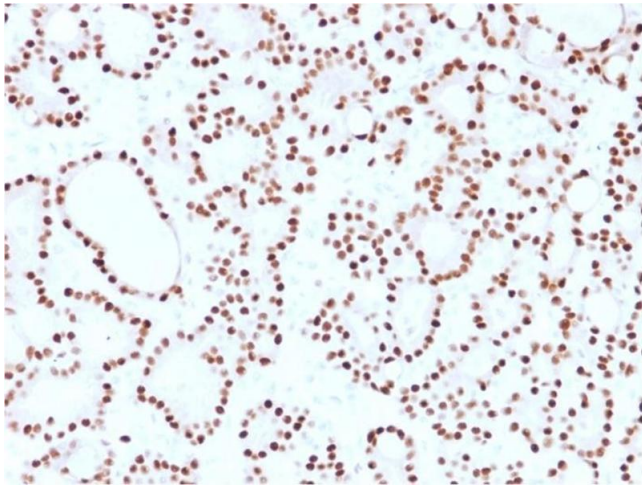
---

Application Notes:	<p>Positive Control: T47D, ZR75, BT474, SKBR3, MCF-7, MDA-MB-453, HT29, Ramos, Jurkat or A431 cells. Mantle cell lymphoma, breast or bladder carcinomas.</p> <p>Known Application: Immunohistochemistry (Formalin-fixed) (1-2 µg/mL for 30 minutes at RT)(Staining of formalin-fixed tissues requires boiling tissue sections in 10 mM citrate buffer, pH 6.0, for 10-20 min followed by cooling at RT for 20 minutes)Optimal dilution for a specific application should be determined.</p>
Restrictions:	For Research Use only

## Handling

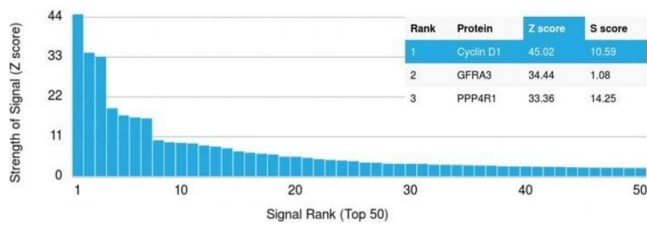
---

Concentration:	200 µg/mL
Buffer:	10 mM PBS with 0.05 % BSA & 0.05 % azide.
Preservative:	Sodium azide
Precaution of Use:	This product contains Sodium azide: a POISONOUS AND HAZARDOUS SUBSTANCE which should be handled by trained staff only.
Storage:	4 °C,-80 °C
Storage Comment:	Antibody with azide - store at 2 to 8°C. Antibody without azide - store at -20 to -80°C. Antibody is stable for 24 months. Non-hazardous. No MSDS required.
Expiry Date:	24 months



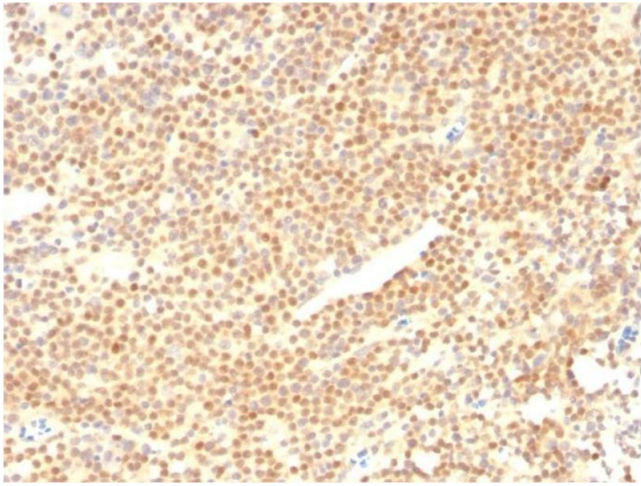
### Immunohistochemistry

**Image 1.** Formalin-fixed, paraffin-embedded human thyroid carcinoma stained with Cyclin D1 Mouse Monoclonal Antibody (CCND1/2593).



### Protein Array

**Image 2.** Analysis of Protein Array containing more than 19,000 full-length human proteins using Cyclin D1 Mouse Monoclonal Antibody (CCND1/2593). Z- and S- Score: The Z-score represents the strength of a signal that a monoclonal antibody (Monoclonal Antibody) (in combination with a fluorescently-tagged anti-IgG secondary antibody) produces when binding to a particular protein on the HuProt™ array. Z-scores are described in units of standard deviations (SD's) above the mean value of all signals generated on that array. If targets on HuProt™ are arranged in descending order of the Z-score, the S-score is the difference (also in units of SD's) between the Z-score. S-score therefore represents the relative target specificity of a Monoclonal Antibody to its intended target. A Monoclonal Antibody is considered to specific to its intended target, if the Monoclonal Antibody has an S-score of at least 2.5. For example, if a Monoclonal Antibody binds to protein X with a Z-score of 43 and to protein Y with a Z-score of 14, then the S-score for the binding of that Monoclonal Antibody to protein X is equal to 29.



### Immunohistochemistry

**Image 3.** Formalin-fixed, paraffin-embedded human Mantle Cell Lymphoma stained with Cyclin D1 Mouse Monoclonal Antibody (CCND1/2593).