

Datasheet for ABIN6940492
anti-Bcl-2 antibody (AA 41-54)

5 Images

[Go to Product page](#)

Overview

Quantity:	100 µg
Target:	Bcl-2 (BCL2)
Binding Specificity:	AA 41-54
Reactivity:	Human
Host:	Mouse
Clonality:	Monoclonal
Conjugate:	This Bcl-2 antibody is un-conjugated
Application:	Western Blotting (WB), Immunohistochemistry (IHC), Immunofluorescence (IF), Flow Cytometry (FACS), Staining Methods (StM), Immunostaining (Ist)

Product Details

Immunogen:	A synthetic peptide, aa41-54 (GAAPAPGIFSSQPG-Cys) of human Bcl-2 protein.
Clone:	100-D5
Isotype:	IgG1 kappa
Specificity:	This antibody recognizes a protein of 25-26 kDa, identified as the bcl-2 lpha oncoprotein. It shows no cross-reaction with Bcl-x or Bax protein. Expression of bcl-2 lpha oncoprotein inhibits the programmed cell death (apoptosis). In most follicular lymphomas, neoplastic germinal centers express high levels of bcl-2 lpha protein, whereas the normal or hyperplastic germinal centers are negative. Consequently, this antibody is valuable when distinguishing between reactive and neoplastic follicular proliferation in lymph node biopsies. It may also be used in distinguishing between those follicular lymphomas that express bcl-2 protein and the small

Product Details

number in which the neoplastic cells are bcl-2 negative.

No Cross-Reactivity: Mouse (Murine), Rat (Rattus)

Purification: Purified by Protein A/G

Target Details

Target: Bcl-2 (BCL2)

Alternative Name: BCL2 ([BCL2 Products](#))

Molecular Weight: 25-26kDa

Gene ID: 596

UniProt: [P10415](#)

Pathways: [MAPK Signaling](#), [PI3K-Akt Signaling](#), [Apoptosis](#), [Caspase Cascade in Apoptosis](#), [Regulation of Muscle Cell Differentiation](#), [Cell-Cell Junction Organization](#), [Skeletal Muscle Fiber Development](#), [Autophagy](#), [Smooth Muscle Cell Migration](#), [Negative Regulation of intrinsic apoptotic Signaling](#)

Application Details

Application Notes: Positive Control: MCF-7, Jurkat, K562, HL-60 or HeLa cells. Tonsil or follicular lymphomas.
Known Application: Flow Cytometry (1-2 µg/million cells), Immunofluorescence (1-2 µg/mL), Western Blot (1-2 µg/mL), Immunohistochemistry (Formalin-fixed) (1-2 µg/mL for 30 minutes at RT)(Staining of formalin-fixed tissues is enhanced by boiling tissue sections in 10 mM Tris with 1 mM EDTA Buffer, pH 9.0, for 10-20 min followed by cooling at RT for 20 minutes)Optimal dilution for a specific application should be determined.

Restrictions: For Research Use only

Handling

Concentration: 200 µg/mL

Buffer: 10 mM PBS with 0.05 % BSA & 0.05 % azide.

Preservative: Sodium azide

Precaution of Use: This product contains Sodium azide: a POISONOUS AND HAZARDOUS SUBSTANCE which should be handled by trained staff only.

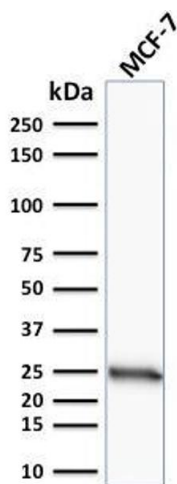
Storage: 4 °C,-80 °C

Handling

Storage Comment: Antibody with azide - store at 2 to 8°C. Antibody without azide - store at -20 to -80°C. Antibody is stable for 24 months. Non-hazardous. No MSDS required.

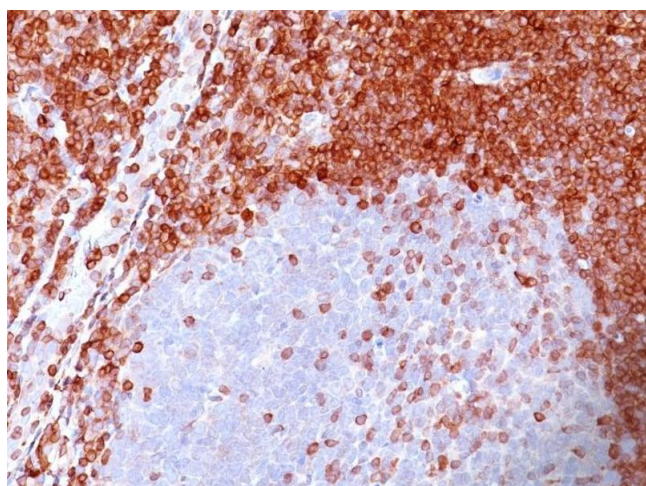
Expiry Date: 24 months

Images



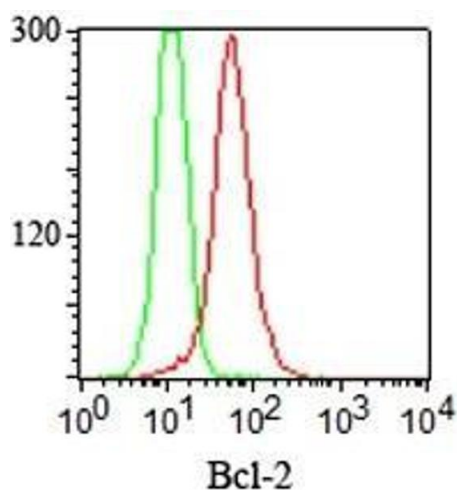
Western Blotting

Image 1. Western Blot Analysis of human MCF-7 cell lysate using Bcl-2 Mouse Monoclonal Antibody (100/D5).



Immunohistochemistry

Image 2. Formalin-fixed, paraffin-embedded human non-Hodgkin's lymphoma stained with Bcl-2 Mouse Monoclonal Antibody (100/D5).



Immunofluorescence

Image 3. Intracellular staining of Bcl-2 in Jurkat cells Bcl-2 Mouse Monoclonal Antibody (100/D5) (red) and isotype control (green).

Please check the [product details page](#) for more images. Overall 5 images are available for ABIN6940492.