

Datasheet for ABIN6940502

## Recombinant anti-Bcl-2 antibody



[Go to Product page](#)

### 5 Images

#### Overview

Quantity:	100 µg
Target:	Bcl-2 (BCL2)
Reactivity:	Human
Host:	Rabbit
Antibody Type:	Recombinant Antibody
Clonality:	Monoclonal
Conjugate:	This Bcl-2 antibody is un-conjugated
Application:	Western Blotting (WB), Immunohistochemistry (IHC), Staining Methods (StM)

#### Product Details

Immunogen:	Recombinant full-length human bcl-2 protein
Clone:	BCL2-2210R
Isotype:	IgG
Specificity:	This antibody recognizes a protein of 25-26 kDa, identified as the bcl-2 lpha oncoprotein. It shows no cross-reaction with Bcl-x or Bax protein. Expression of bcl-2 lpha oncoprotein inhibits the programmed cell death (apoptosis). In most follicular lymphomas, neoplastic germinal centers express high levels of bcl-2 lpha protein, whereas the normal or hyperplastic germinal centers are negative. Consequently, this antibody is valuable when distinguishing between reactive and neoplastic follicular proliferation in lymph node biopsies. It may also be used in distinguishing between those follicular lymphomas that express bcl-2 protein and the small number in which the neoplastic cells are bcl-2 negative.

## Product Details

Purification: Purified by Protein A/G

## Target Details

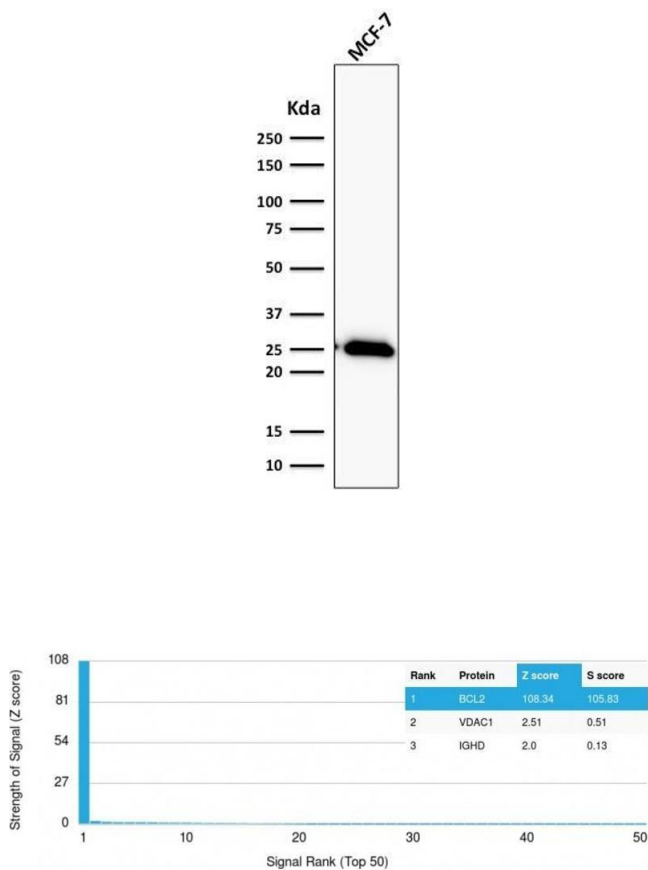
Target:	Bcl-2 (BCL2)
Alternative Name:	BCL2 ( <a href="#">BCL2 Products</a> )
Molecular Weight:	25-26kDa
Gene ID:	596
UniProt:	<a href="#">P10415</a>
Pathways:	<a href="#">MAPK Signaling</a> , <a href="#">PI3K-Akt Signaling</a> , <a href="#">Apoptosis</a> , <a href="#">Caspase Cascade in Apoptosis</a> , <a href="#">Regulation of Muscle Cell Differentiation</a> , <a href="#">Cell-Cell Junction Organization</a> , <a href="#">Skeletal Muscle Fiber Development</a> , <a href="#">Autophagy</a> , <a href="#">Smooth Muscle Cell Migration</a> , <a href="#">Negative Regulation of intrinsic apoptotic Signaling</a>

## Application Details

Application Notes:	Positive Control: Jurkat, K562, HL-60 or HeLa cells. Tonsil or follicular lymphomas. Known Application: Western Blot (1-2 µg/mL), Immunohistochemistry (Formalin-fixed) (1-2 µg/mL for 30 minutes at RT)(Staining of formalin-fixed tissues requires boiling tissue sections in 1 mM EDTA, pH 7.5-8.5, for 10-20 min followed by cooling at RT for 20 minutes)Optimal dilution for a specific application should be determined.
Restrictions:	For Research Use only

## Handling

Concentration:	200 µg/mL
Buffer:	10 mM PBS with 0.05 % BSA & 0.05 % azide.
Preservative:	Sodium azide
Precaution of Use:	This product contains Sodium azide: a POISONOUS AND HAZARDOUS SUBSTANCE which should be handled by trained staff only.
Storage:	4 °C, -80 °C
Storage Comment:	Antibody with azide - store at 2 to 8°C. Antibody without azide - store at -20 to -80°C. Antibody is stable for 24 months. Non-hazardous. No MSDS required.
Expiry Date:	24 months

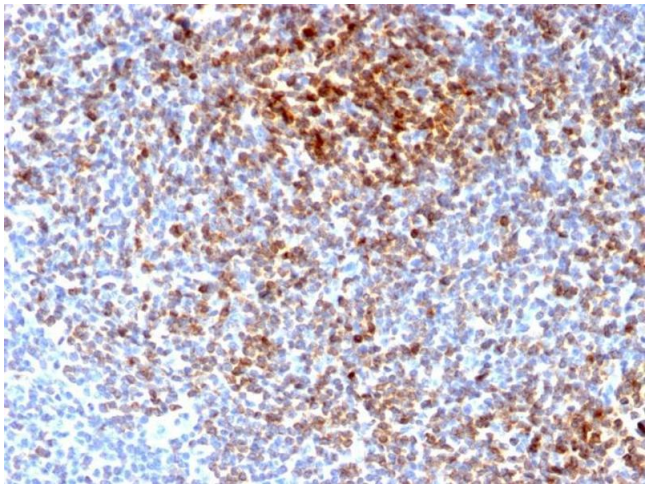


Western Blotting

**Image 1.** Western Blot Analysis of human MCF-7 cell lysate using Bcl-2 Rabbit Recombinant Monoclonal Antibody (BCL2/2210R).

Protein Array

**Image 2.** Analysis of Protein Array containing more than 19,000 full-length human proteins using Bcl-2 Rabbit Recombinant Monoclonal Antibody (BCL2/2210R). Z- and S-Score: The Z-score represents the strength of a signal that a monoclonal antibody (MAb) (in combination with a fluorescently-tagged anti-IgG secondary antibody) produces when binding to a particular protein on the HuProt™ array. Z-scores are described in units of standard deviations (SD's) above the mean value of all signals generated on that array. If targets on HuProt™ are arranged in descending order of the Z-score, the S-score is the difference (also in units of SD's) between the Z-score. S-score therefore represents the relative target specificity of a MAb to its intended target. A MAb is considered to specific to its intended target, if the MAb has an S-score of at least 2.5. For example, if a MAb binds to protein X with a Z-score of 43 and to protein Y with a Z-score of 14, then the S-score for the binding of that MAb to protein X is equal to 29.



Immunohistochemistry

**Image 3.** Formalin-fixed, paraffin-embedded human Follicular Lymphoma stained with Bcl-2 Rabbit Recombinant Monoclonal Antibody (BCL2/2210R).

Please check the [product details page](#) for more images. Overall 5 images are available for ABIN6940502.