

Datasheet for ABIN6940509

anti-BCL2L1 antibody (AA 3-14)



[Go to Product page](#)

3 Images

Overview

Quantity:	100 µg
Target:	BCL2L1
Binding Specificity:	AA 3-14
Reactivity:	Human, Mouse, Rat, Pig
Host:	Mouse
Clonality:	Monoclonal
Conjugate:	This BCL2L1 antibody is un-conjugated
Application:	Western Blotting (WB), Immunohistochemistry (IHC), Staining Methods (StM)

Product Details

Immunogen:	A synthetic peptide, aa 3-14 (Cys-QSNRELVVDFLS) of human Bcl-X protein.
Clone:	BX006
Isotype:	IgG2a kappa
Specificity:	Recognizes a protein of 27 kDa, identified as the Bcl-X protein. This MAb shows no cross-reaction with Bcl-2 or Bax protein. Bcl-X has two isoforms, Bcl-XL (long), a 241 amino acid protein which suppresses cell death. And Bcl-XS (short), a 178 amino acid protein lacking a 63 amino acid domain which functions as a dominant inhibitor of Bcl-2. This MAb reacts with both Bcl-XS and Bcl-XL proteins.
Purification:	Purified by Protein A/G

Target Details

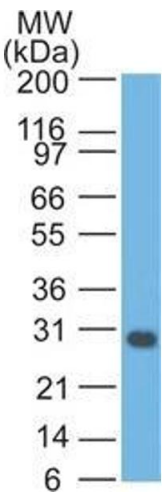
Target:	BCL2L1
Alternative Name:	BCL2L1 (BCL2L1 Products)
Molecular Weight:	27kDa
Gene ID:	598
UniProt:	Q07817
Pathways:	Apoptosis , Negative Regulation of intrinsic apoptotic Signaling

Application Details

Application Notes:	<p>Positive Control: Jurkat, K562, HL-60 or HeLa cells. Reed-Sternberg cells in Hodgkin's lymphoma.</p> <p>Known Application: Western Blot (0.5-1 µg/mL), Immunohistochemistry (Formalin-fixed) (0.5-1 µg/mL for 30 minutes at RT) (Staining of formalin-fixed tissues requires boiling tissue sections in 1 mM EDTA buffer, pH 7.5-8.5, for 10-20 min followed by cooling at RT for 20 minutes)Optimal dilution for a specific application should be determined.</p>
Restrictions:	For Research Use only

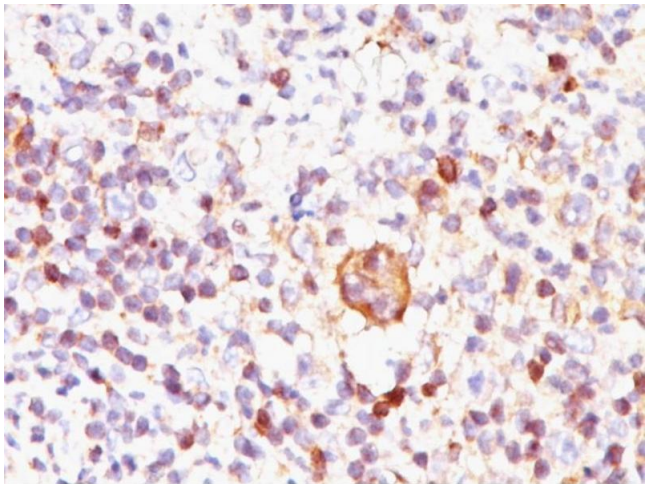
Handling

Concentration:	200 µg/mL
Buffer:	10 mM PBS with 0.05 % BSA & 0.05 % azide.
Preservative:	Sodium azide
Precaution of Use:	This product contains Sodium azide: a POISONOUS AND HAZARDOUS SUBSTANCE which should be handled by trained staff only.
Storage:	4 °C,-80 °C
Storage Comment:	Antibody with azide - store at 2 to 8°C. Antibody without azide - store at -20 to -80°C. Antibody is stable for 24 months. Non-hazardous. No MSDS required.
Expiry Date:	24 months



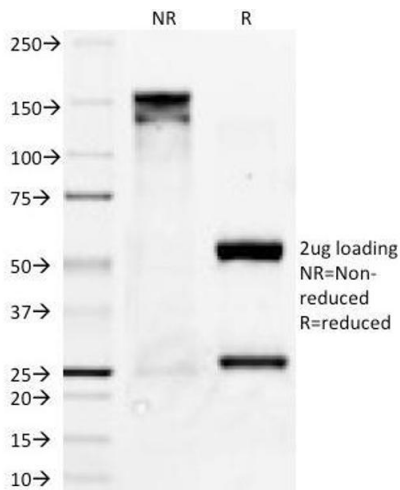
Western Blotting

Image 1. Western Blot Analysis of Jurkat cell lysate Bcl-x Mouse Monoclonal Antibody (BX006).



Immunohistochemistry

Image 2. Formalin-fixed, paraffin-embedded Hodgkin's lymphoma stained with Bcl-x Mouse Monoclonal Antibody (BX006).



SDS-PAGE

Image 3. SDS-PAGE Analysis Purified Bcl-x Mouse Monoclonal Antibody (BX006). Confirmation of Integrity and Purity of Antibody.