



Datasheet for ABIN6940532

## Recombinant anti-BCL6 antibody (AA 256-389)



[Go to Product page](#)

### 2 Images

#### Overview

|                      |  |
|----------------------|--|
| Quantity:            | 100 µg   |
| Target:              | BCL6   |
| Binding Specificity: | AA 256-389   |
| Reactivity:          | Human  |
| Host:                | Rabbit   |
| Antibody Type:       | Recombinant Antibody                               |
| Clonality:           | Monoclonal   |
| Conjugate:           | This BCL6 antibody is un-conjugated                |
| Application:         | Immunohistochemistry (IHC), Staining Methods (StM) |

#### Product Details

|              |   |
|--------------|---|
| Immunogen:   | Recombinant human bcl-6 protein fragment (aa256-389) (exact sequence is proprietary)  |
| Clone:       | BCL6-2497R  |
| Isotype:     | IgG   |
| Specificity: | Recognizes a protein of 95 kDa, which is identified as Bcl-6. Antibody to bcl-6 is helpful in a number of diagnostic settings: (1) In the differential diagnosis of small B-cell lymphoma. Follicular lymphoma will show bcl-6 (and CD10) positivity whereas other small B-cell lymphomas are usually negative. (2) Bcl-6 is an important prognostic marker in diffuse large B-cell lymphomas (DLBCL), where CD10, bcl-6 and MUM1/IRF4 are used to identify germinal center and activated B-cell phenotypes. (3) Bcl-6 can be valuable in distinguishing classical Hodgkin lymphoma from nodular lymphocyte predominant Hodgkin lymphoma (NLPHL). The |

## Product Details

---

Reed-Sternberg cells of classical Hodgkin lymphoma are bcl-6 negative whereas the large ('LH') cells of NLPHL are bcl-6 positive. In contrast, anti-Bcl-6 rarely stains mantle-cell lymphoma and MALT lymphoma.

Purification: Purified by Protein A/G

## Target Details

---

Target: BCL6

Alternative Name: BCL6 ([BCL6 Products](#))

Molecular Weight: 95kDa

Gene ID: 604

UniProt: [P41182](#)

Pathways: [Chromatin Binding](#), [Regulation of Leukocyte Mediated Immunity](#), [Production of Molecular Mediator of Immune Response](#), [Protein targeting to Nucleus](#)

## Application Details

---

Application Notes: Positive Control: Raji or Ramos cells. Tonsil or Hodgkin's lymphoma.  
Known Application: Immunohistochemistry (Formalin-fixed) (1-2 µg/mL for 30 minutes at RT)(Staining of formalin-fixed tissues requires boiling tissue sections in 10 mM Tris with 1 mM EDTA, pH 9.0, for 10-20 min followed by cooling at RT for 20 minutes)Optimal dilution for a specific application should be determined.

Restrictions: For Research Use only

## Handling

---

Concentration: 200 µg/mL

Buffer: 10 mM PBS with 0.05 % BSA & 0.05 % azide.

Preservative: Sodium azide

Precaution of Use: This product contains Sodium azide: a POISONOUS AND HAZARDOUS SUBSTANCE which should be handled by trained staff only.

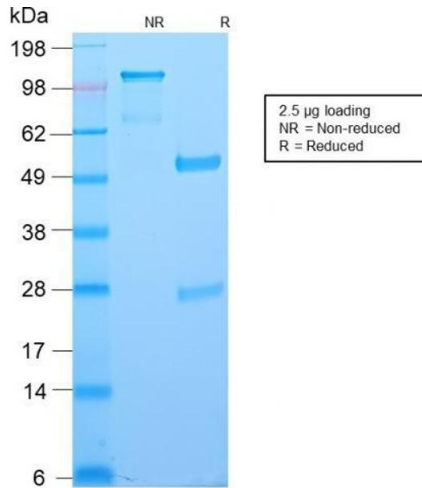
Storage: 4 °C, -80 °C

Storage Comment: Antibody with azide - store at 2 to 8°C. Antibody without azide - store at -20 to -80°C. Antibody

is stable for 24 months. Non-hazardous. No MSDS required.

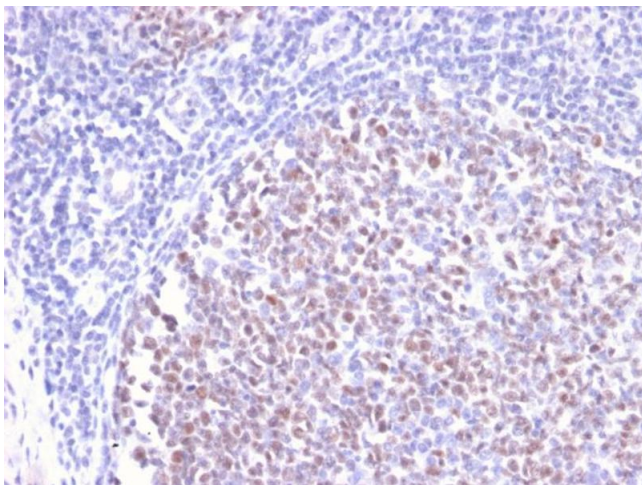
Expiry Date: 24 months

Images



SDS-PAGE

**Image 1.** SDS-PAGE Analysis Purified BCL-6 Rabbit Recombinant Monoclonal Antibody (BCL6/2497R). Confirmation of Purity and Integrity of Antibody.



Immunohistochemistry

**Image 2.** Formalin-fixed, paraffin-embedded human Tonsil stained with BCL-6 Rabbit Recombinant Monoclonal Antibody (BCL6/2497R).